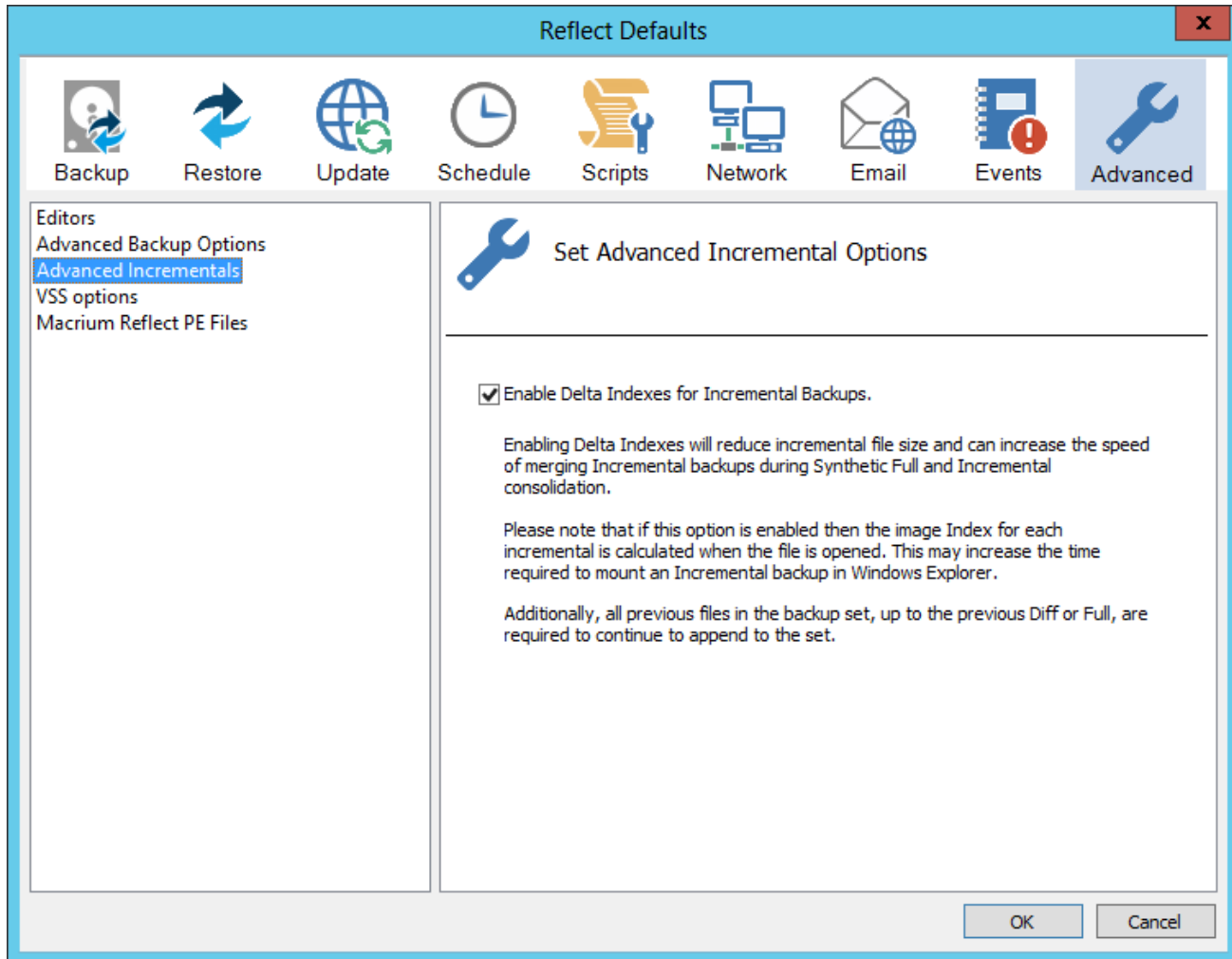


# Delta Indexes for Incremental Backups



## Advantages of Full indexes:

Incrementals are self describing	No additional backup files are required to be loaded other than the most recent Incremental when appending to an existing backup set. This enables backup sets to be 'split' over multiple locations; useful if you want to archive part of a backup set.
Mounting incremental backups is fast	Because the entire index is available when the Incremental file is opened the backup set can be mounted and browsed in Windows Explorer very quickly. See: <a href="#">Browsing Macrium Reflect images and backups in Windows Explorer</a>

## Disadvantages of Full indexes:

Increases the size of Incremental backups	When running Incremental backups on a data set where very little has changed the overhead of the Full index may be greater than the size of the data that's backed up.
Consolidation causes subsequent Incrementals to be updated	If your backup 'Retention Rules' invoke a 'Synthetic Full' or 'Incremental Merge' then indexes contained in more recent Incrementals are updated to reflect the consolidation. Without updating the Index would become 'stale'. This file change can cause excessive file copying when synchronizing consolidated backup sets to an archive location. See: <a href="#">Backup Folder Synchronization</a> for more information on this.

## Advantages of Delta indexes

Decreases the size of Incremental backups	The Incremental file index contains only a list of the changed data blocks in the incremental. This means that Incremental backups with only a few changes are optimized for backup file size. This is most apparent when performing frequent Incremental backups.
Later Incrementals are unaffected by Consolidation	Because the Incremental index only contains references to itself there is no need to update the Incremental backup file when earlier backups in the same set are consolidated. This overcomes the issue with <a href="#">Backup Folder Synchronization</a> caused by Full indexes.

#### Disadvantages of Delta Incremental

Incrementals depend on all previous backups	A backup set cannot be appended to unless all previous files in the set are available in the same folder as the most recent Incremental. Partial archiving of a backup set is not possible.
Mounting incremental backups may be slower	Because the Full Index has to be constructed when the Incremental file is opened, this can lead to a delay of a few seconds when <a href="#">browsing images and backups in Windows Explorer</a> .

**Note:** A backup set can contain a mixture of Incremental backups with Full and Delta Indexes. If Delta Indexing is enabled mid backup set, then only Incrementals created after enabling will contain delta indexes.

Please ensure that you are using Rescue Media created with Macrium Reflect **v6.1** if Delta Indexing is enabled.

**Click the 'Rebuild' button** on the final Rescue Media Wizard page. See: [Creating rescue media](#) for more information.