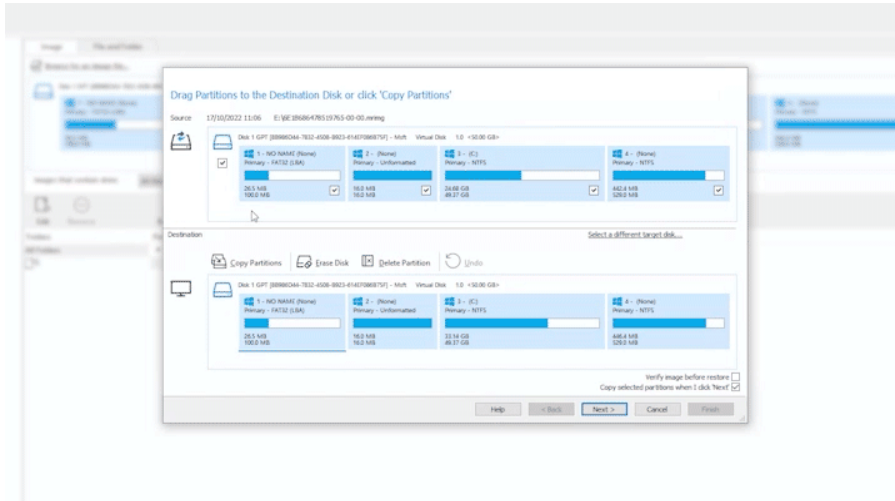


Managing Partitions in the Image Restore and Clone Wizard

When using the restore/clone wizard, there are several ways to manage partitions on the destination disk before the restore/clone operation takes place. This ensures that it is easy to arrange and resize partitions so that your restore/clone destination disk is exactly how you want it.

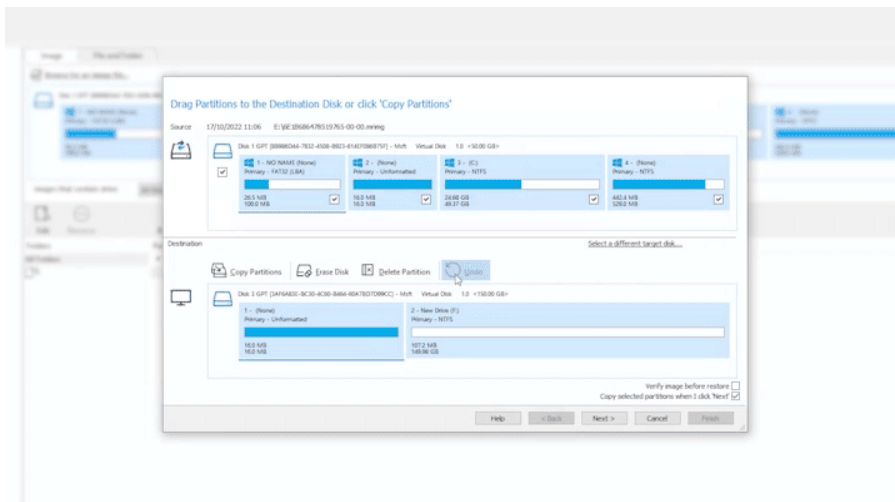
Selecting a different target disk:

If your system has multiple disks, this option can be used to change the disk that will be used as the destination for the clone/restore. It is important to ensure that the correct disk is selected, as cloning and restoring can be destructive operations.



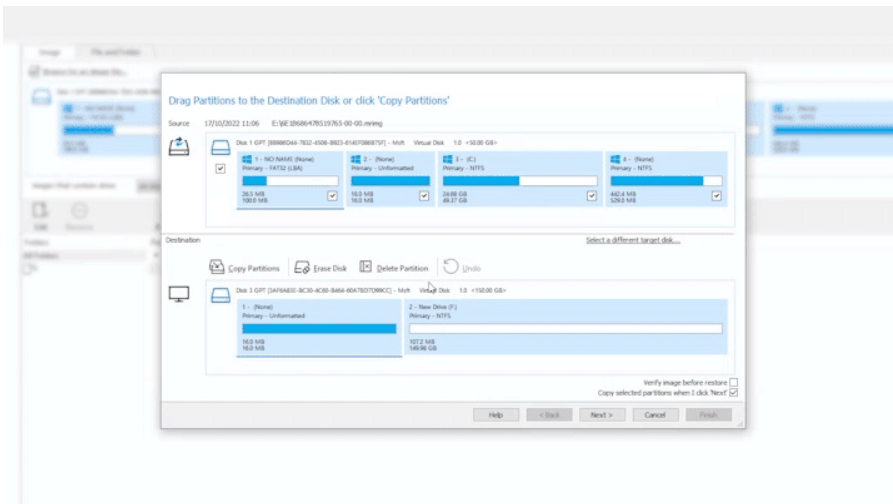
Erasing partitions on the destination disk:

This option can be used to remove all the partitions from the destination. Don't worry if you make a mistake, these partitions will not be deleted until the clone or restore operation has started! You can use the 'undo' button to undo a change that you have made, at any time.



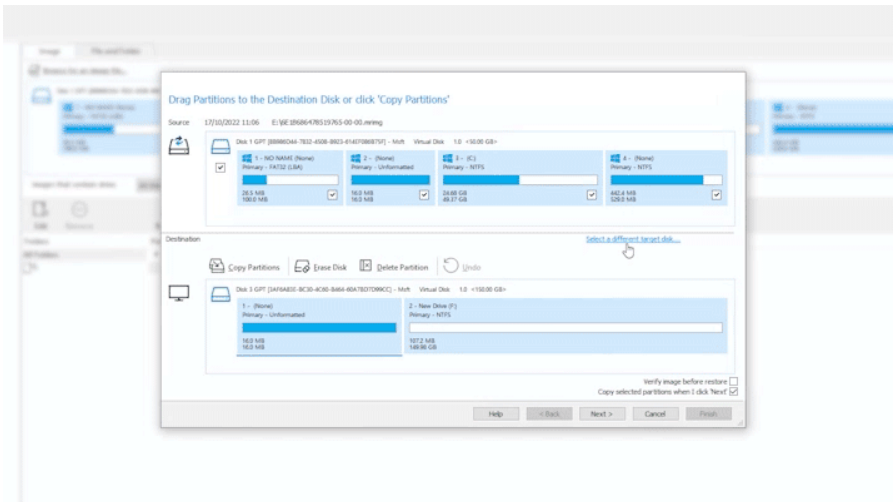
Using 'Shrink or expand to fill the target disk':

Selected partition(s) will be copied to the target and all **extendable/shrinkable** partitions will be proportionately resized so all partitions fill the disk. **Extendable** and **Shrinkable** partitions are all non-system partitions, and drive C, formatted using either NTFS or FAT32. Note in the example below that the C: drive has been expanded to fill the extra space on the destination drive.



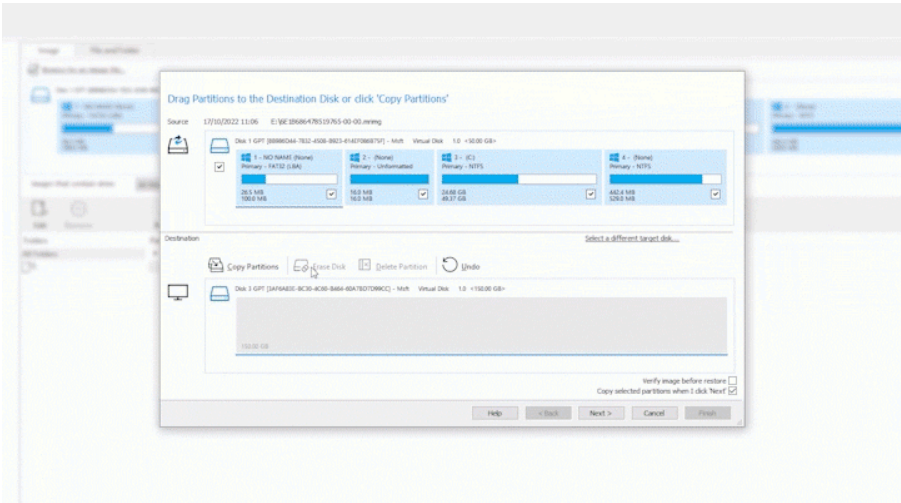
Using 'Exact partition size and offset':

Selected partition(s) will be copied to the target maintaining the starting positions and lengths, from left to right. If the disk is smaller than the end of the last selected partition, then the last **shrinkable** (NTFS or FAT32) partition is shrunk to enable all partitions to be copied.



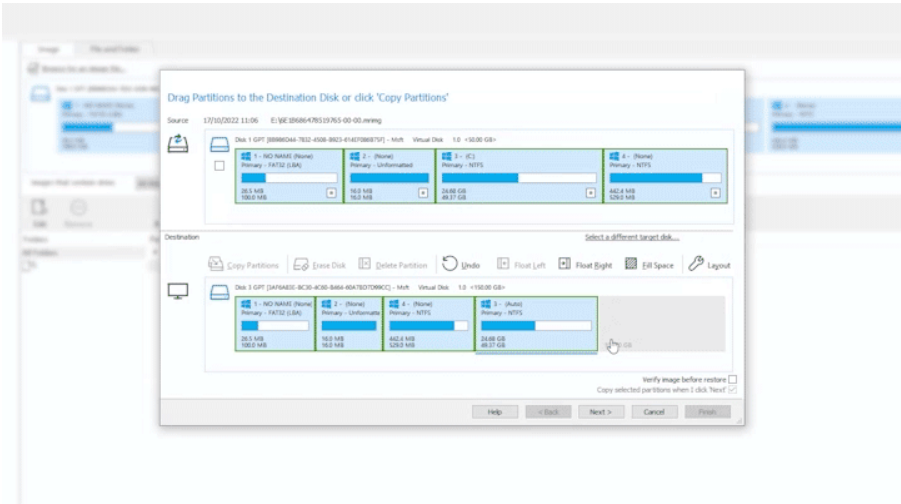
Dragging partitions from the source to the destination disk:

Alternatively, you can drag partitions from the source to the destination manually. This allows you to reorder the partitions as they are copied to the destination.



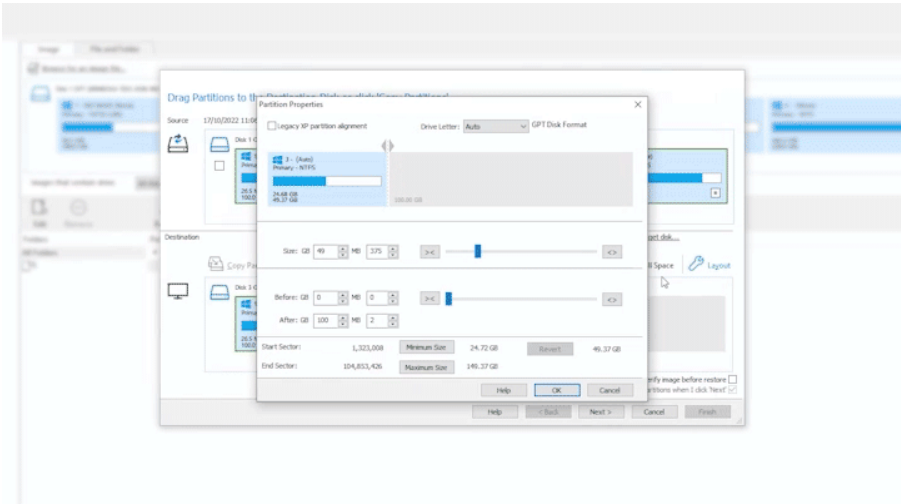
Using 'Fill space':

This option will expand the selected partition to fill all unpartitioned (free space on the disk which has not been allocated to a partition) to the right of the selected partition.



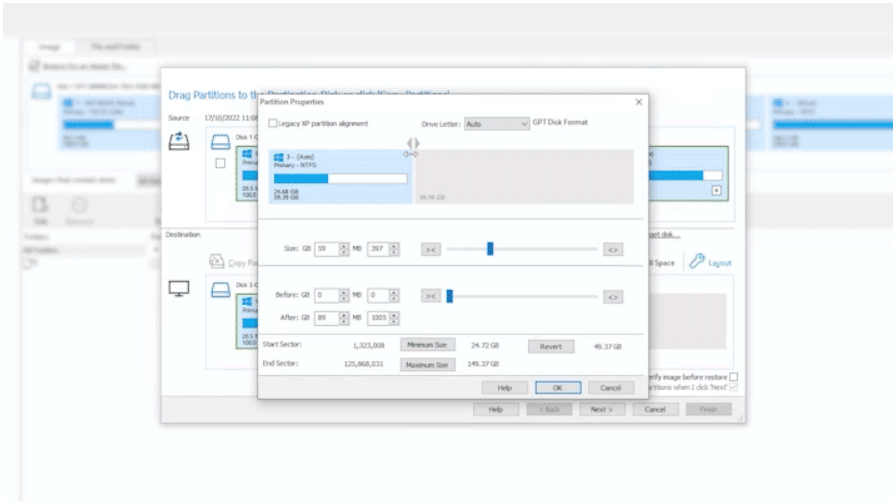
Manually resizing partitions:

This option can be used to manually specify the size of the selected partition.



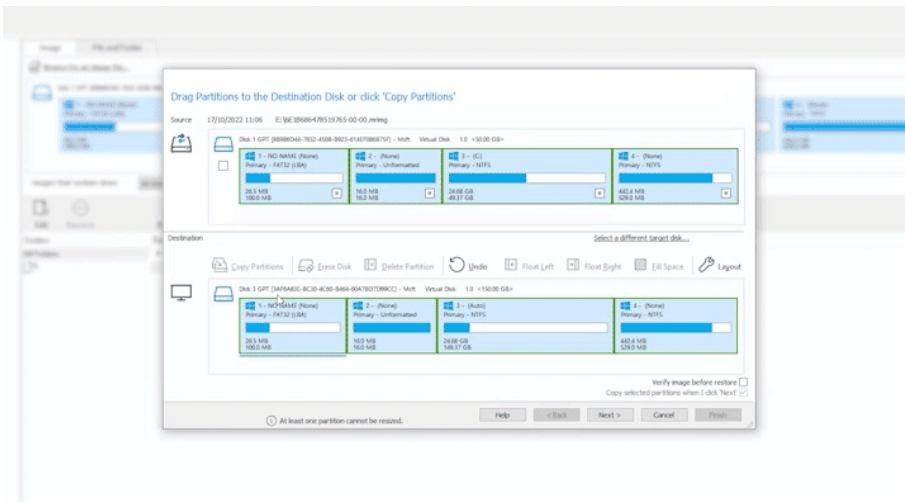
Manually moving a partition:

This option allows you to manually drag the partition to a different location on the destination.



Using the undo button:

Don't worry if you make a mistake while managing the partitions on the destination. None of the changes you have made are final until the restore/clone operation begins (at which point partitions on the destination can be permanently deleted). The undo button allows you to undo any choices that you have made while managing the partitions on the destination.



For the full video, please see below: