

Installing and Configuring WDS for PXE Boot on Windows Server 2016 2019 2022

Created by:	Ari Novikoff, MCPS Senior Pre-Sales Engineer Macrium Software
--------------------	--

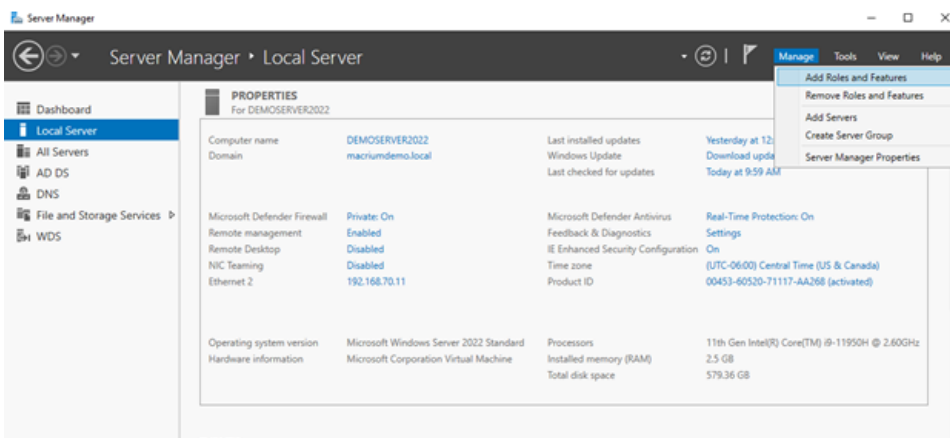
IMPORTANT ASSUMPTIONS AND NOTES

1. You are using this WDS server in a closed testing / deployment environment. Please do NOT do this in a live production environment without the necessary clearance / permission / authority / licensing to do so.
2. You are a network administrator and have domain administrator access or permission to use a Windows Server / Server license for this project.
3. You are a network administrator and have the appropriate authority / permission to complete this project.
4. You understand how to, are licensed to, and have created the Technician's USB stick from your Deployment Kit for use further on in this document.
5. You have the proper Microsoft licensing to use the Deployment Kit for the purpose of this project.
6. This server will be both a WDS and DHCP server for this closed environment.
7. Macrium Software, its parent company Paramount Software UK Ltd, its affiliates and/or employees are not liable under any circumstances for issues arising directly or indirectly from the use of this document.

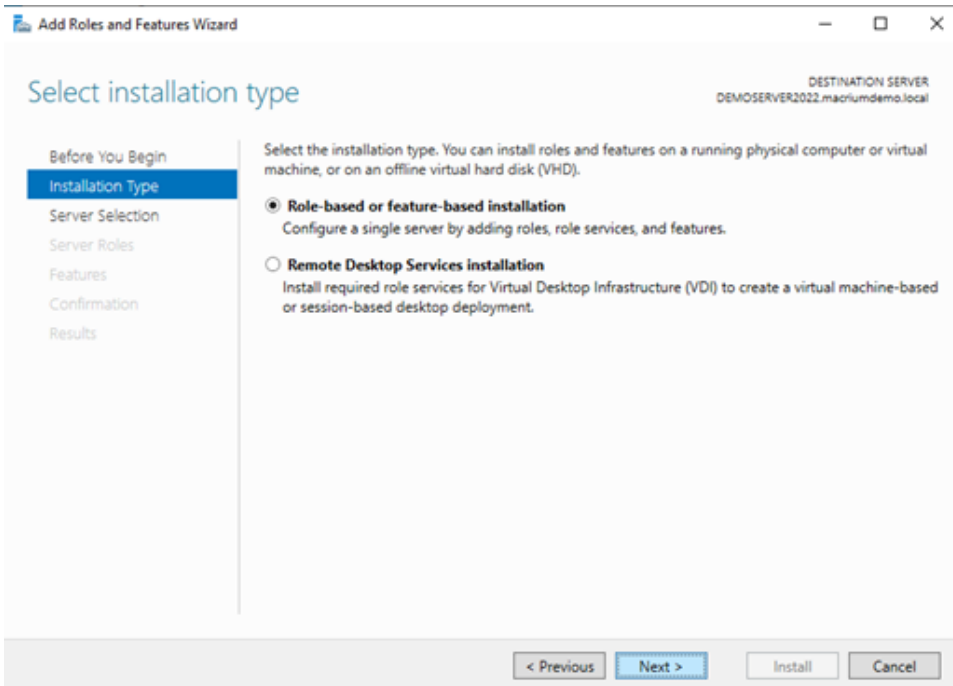
If the above assumptions and notes above do not pertain to your environment, license compliance, and/or permission, and/or if you do not agree with the assumptions and notes above, then please **DO NOT** proceed. Your use of this document is subject to and constitutes your acceptance of the above and is done so completely at your own risk.

Install and configure the WDS Role on Windows Server 2016/2019/2022.

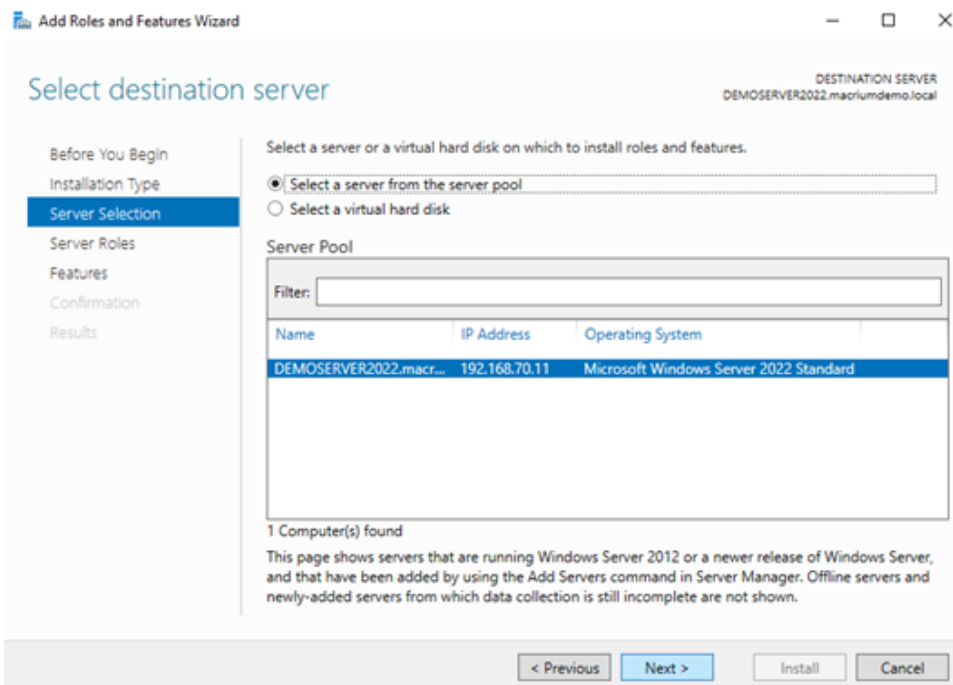
1. Open Server Manager and select the Local Server
2. Click on Manage, then select "Add Roles and Features"



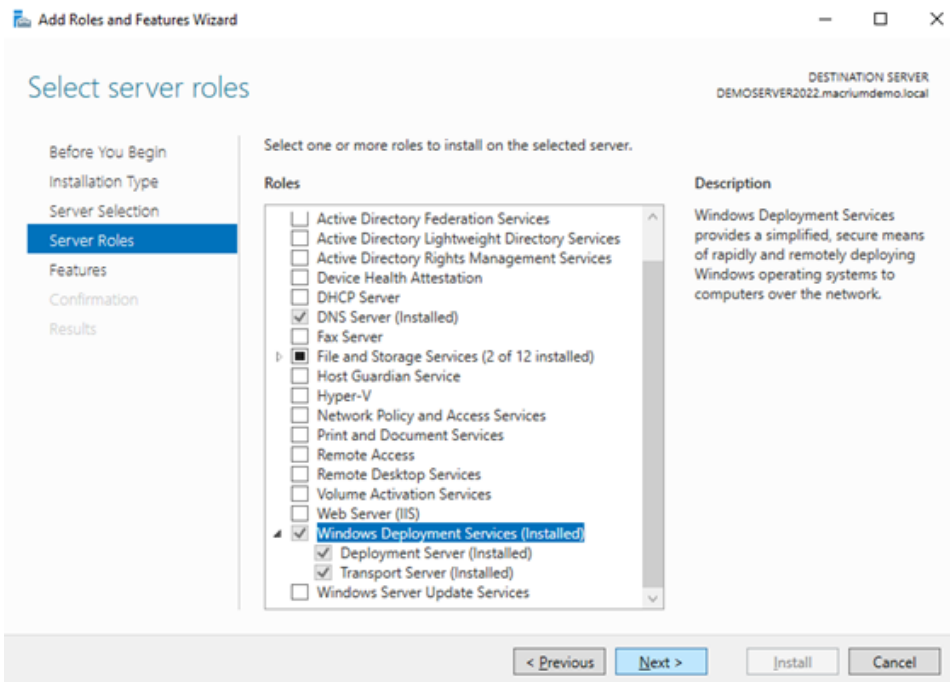
3. Select "Role-based or feature-based installation". Click "Next" when done.



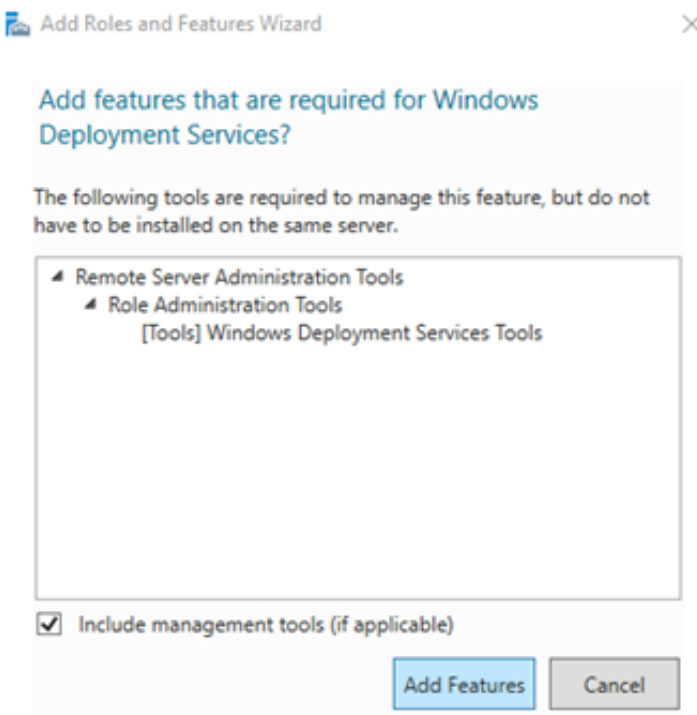
4. Select the destination server. Click "Next" when done.



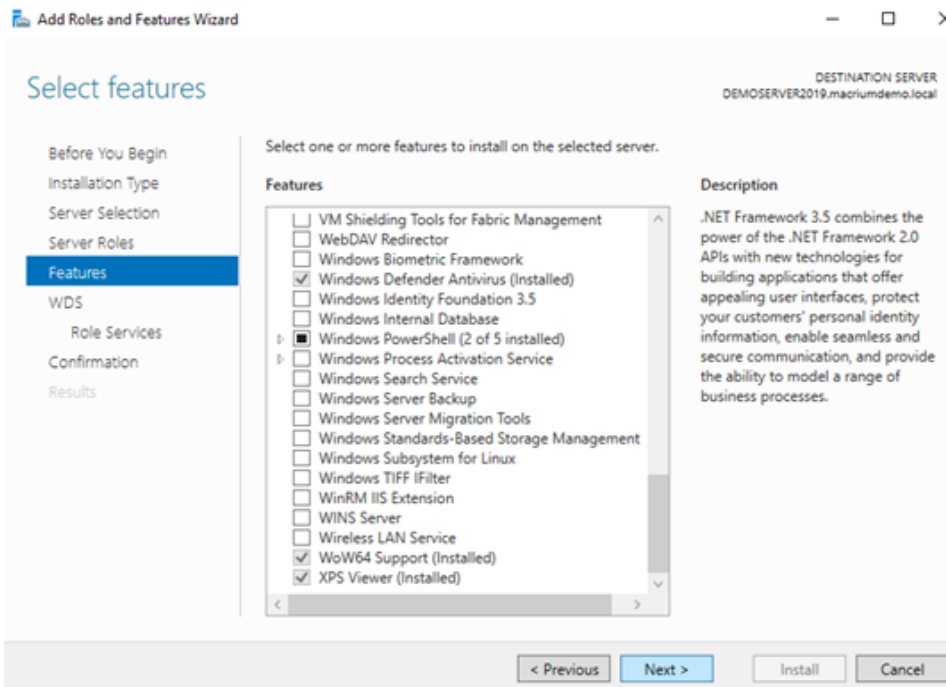
5. Select "Windows Deployment Services" from the Roles list. Click "Next" when done.



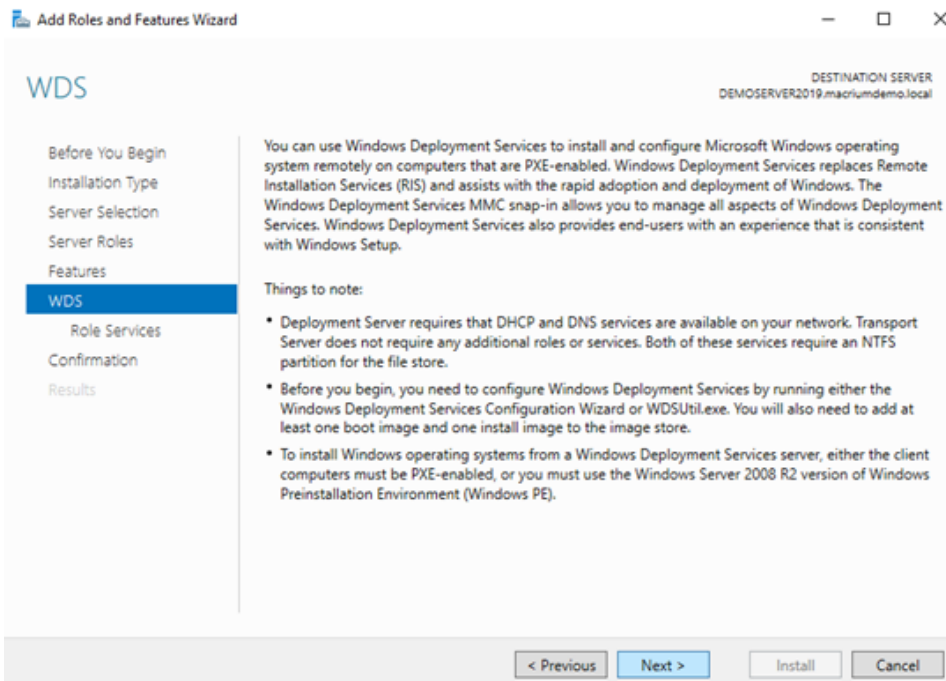
6. To confirm the features that are required, click "Add Features".



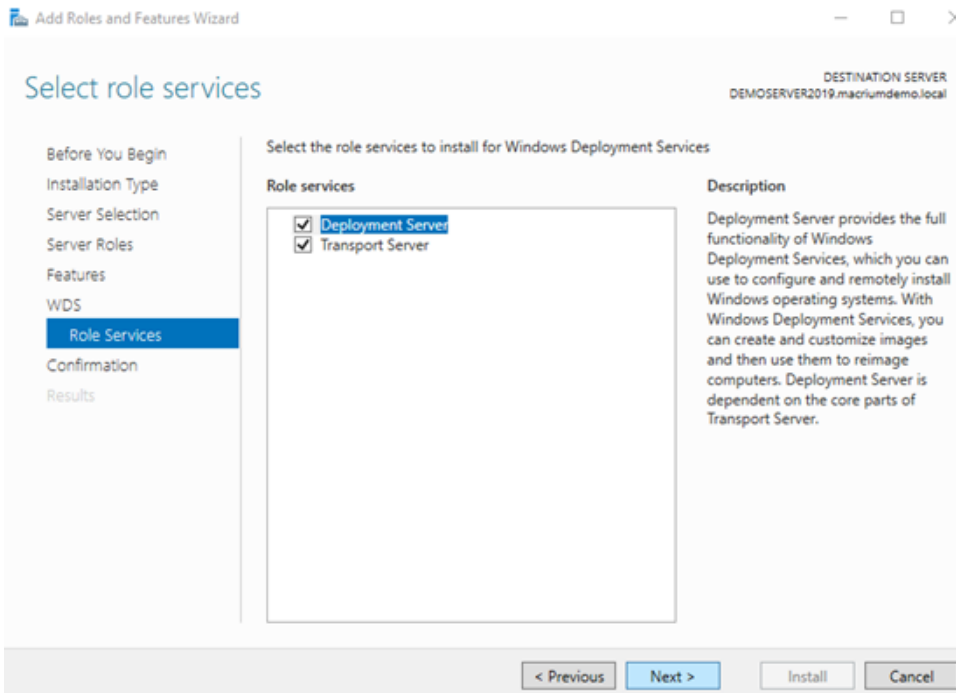
7. Click "Next" on the Features list.



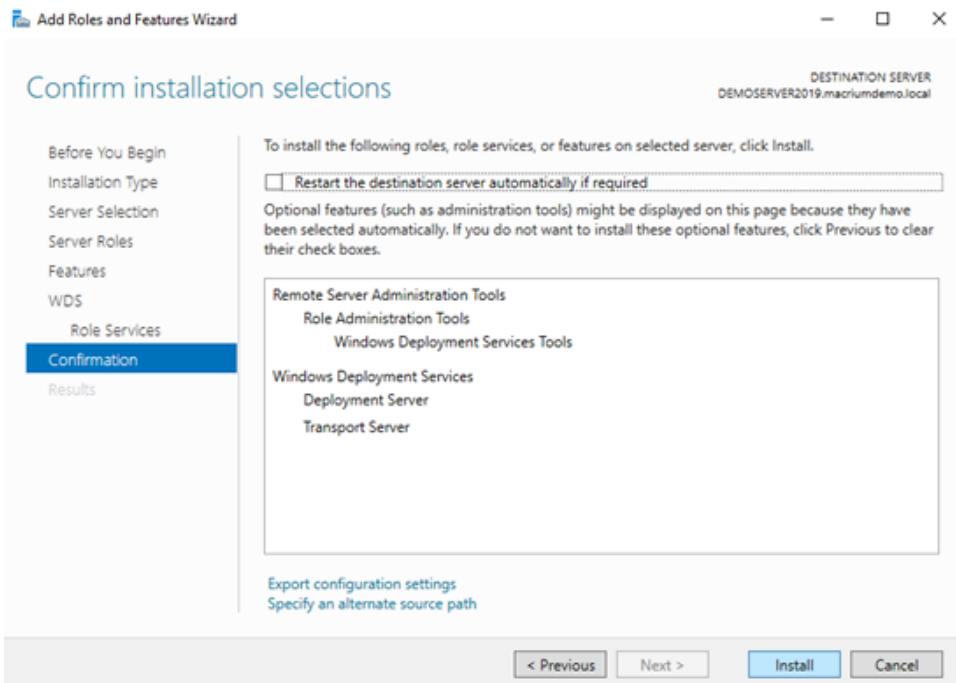
8. Read through the notes for WDS installation and click "Next"



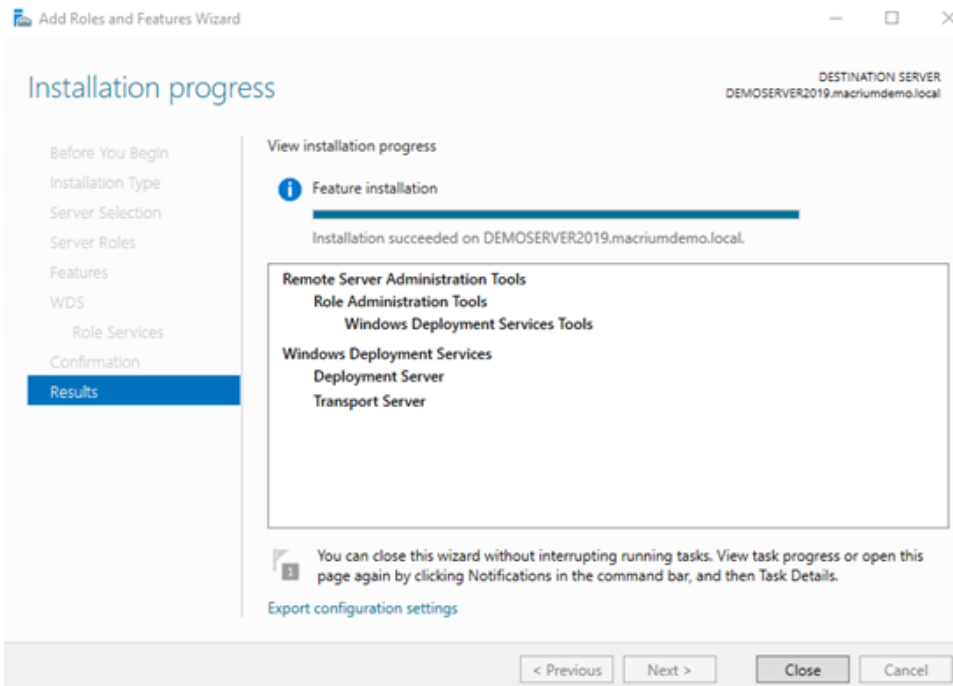
9. Confirm the Role Services and click "Next".



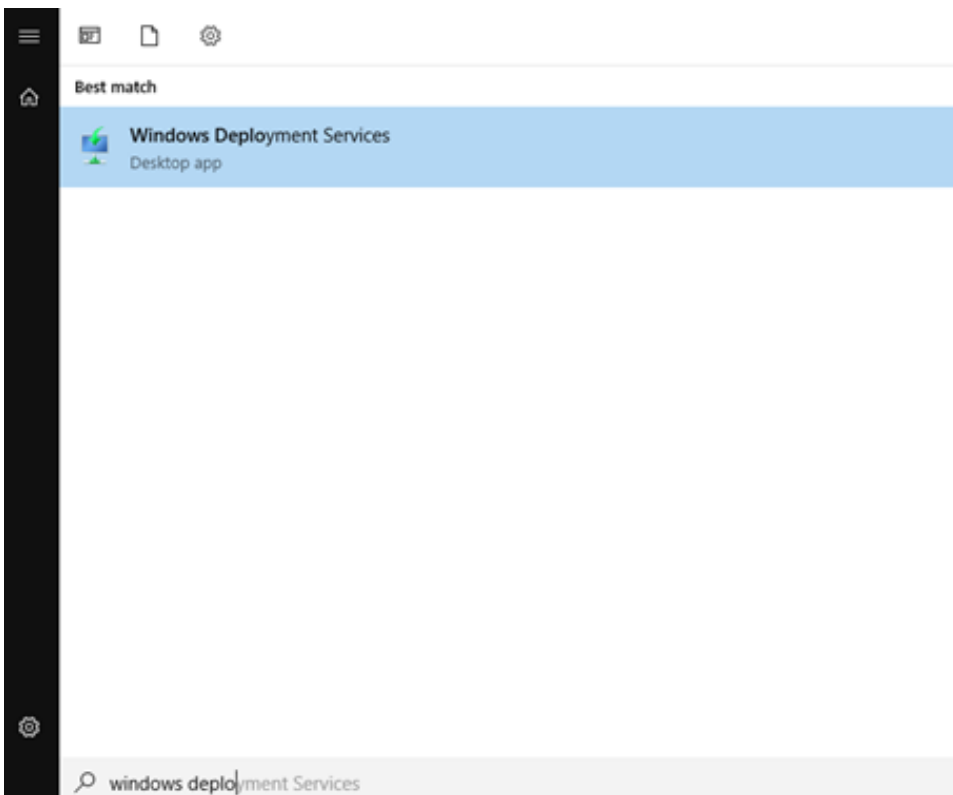
10. One last chance to make changes. Confirm by clicking "Install".



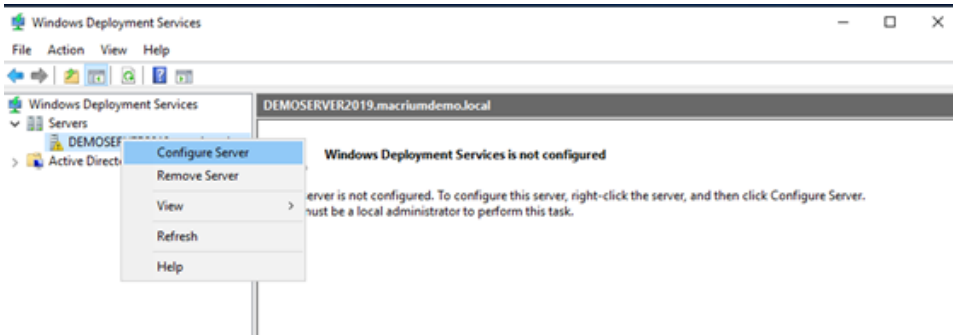
11. Wait for the installation to complete and click "Close"



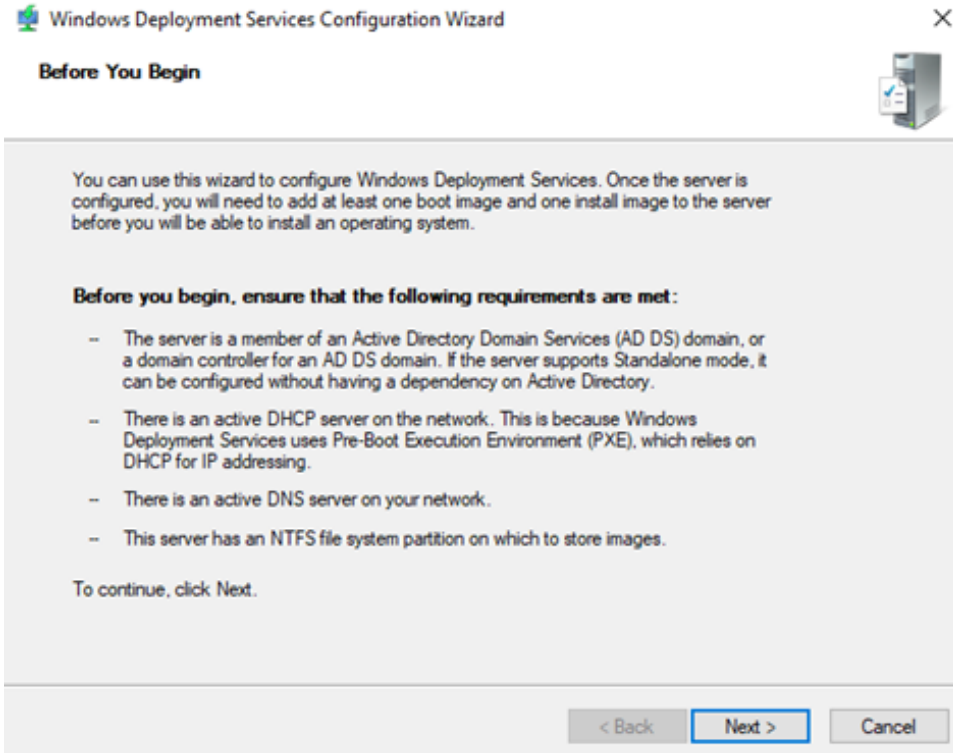
12. In the search pane type “Windows deployment services” and click on the app when it comes up.



13. Now we begin the process of configuring WDS. Right click on your server and select “Configure Server”.

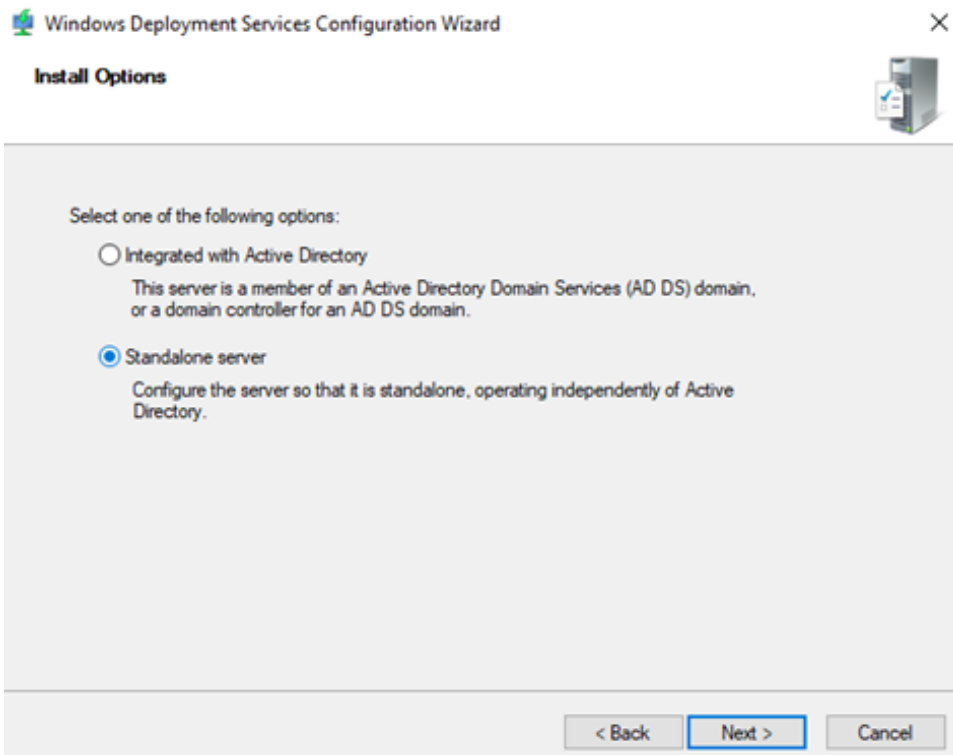


14. Read through the information screen and click "Next".



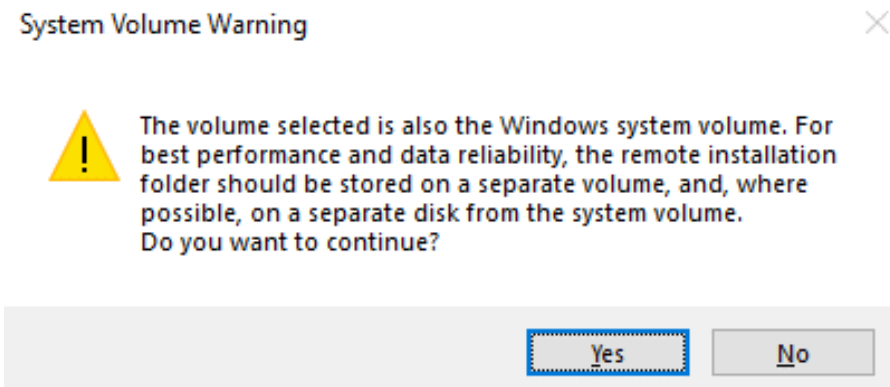
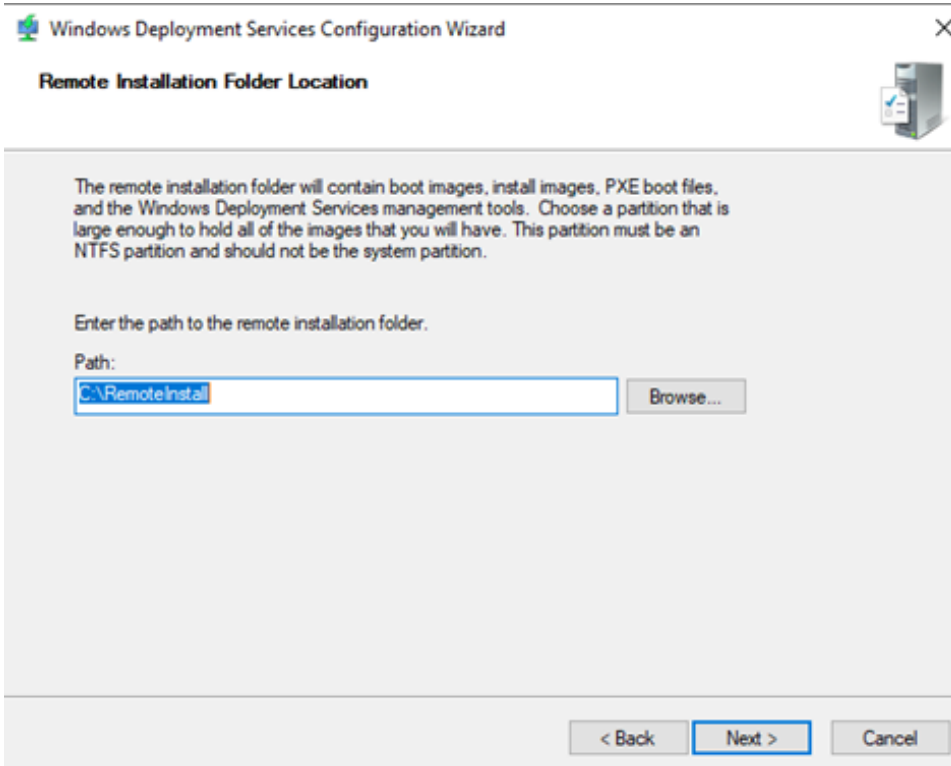
15. Select "Standalone Server" and click "Next".

Note: While you *can* select "Integrated with Active Directory", that is beyond the scope of this document.

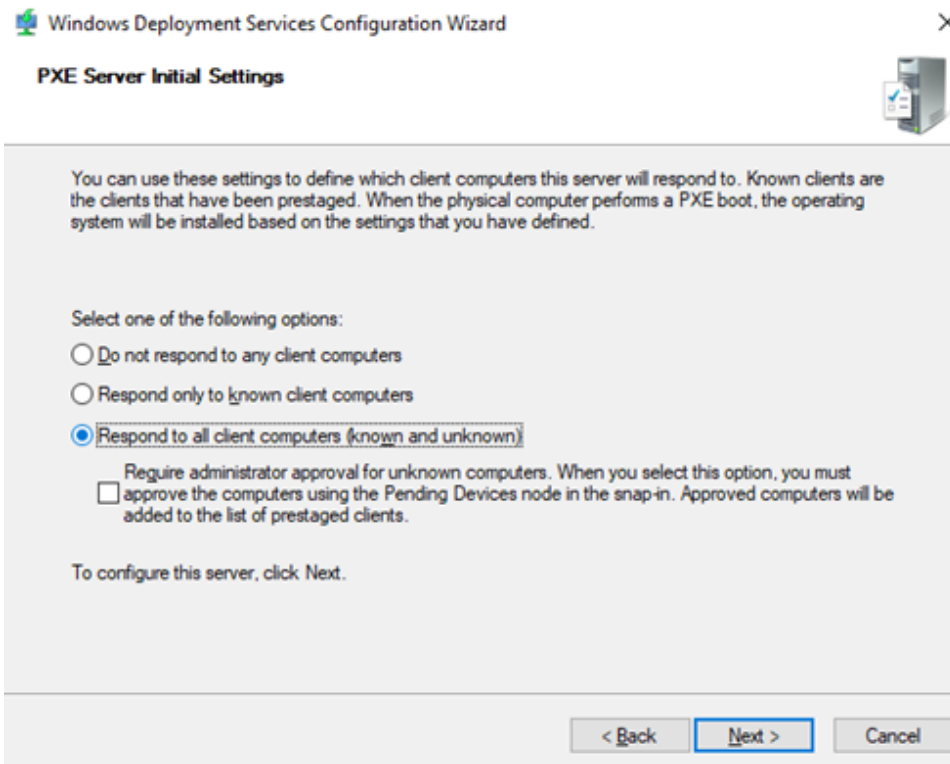


16. Create a remote installation folder or use the default given. In this example, we're using the default "C:\RemoteInstall". Click "Next".

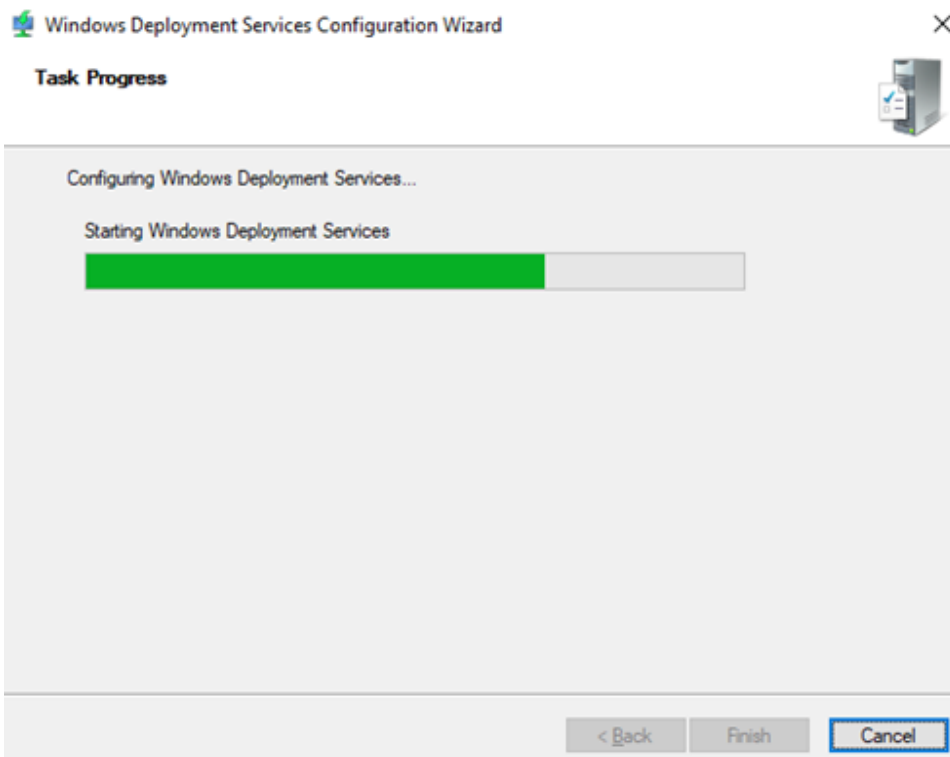
Note: If you select a folder on the same volume as your operating system, you'll have a System Volume Warning pop up. Read it and click "Yes" if you're comfortable with moving forward, or pick another volume to store the Remote Install folder.



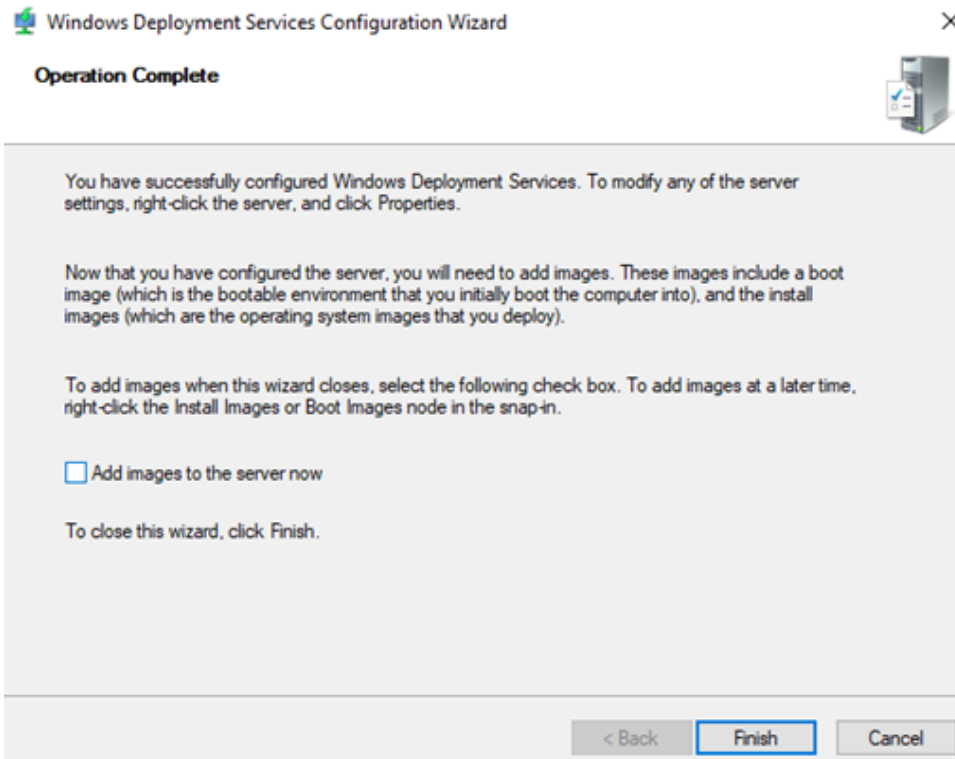
17. For your PXE Initial Settings, please select "Respond to all client computers (known and unknown)". Click "Next".



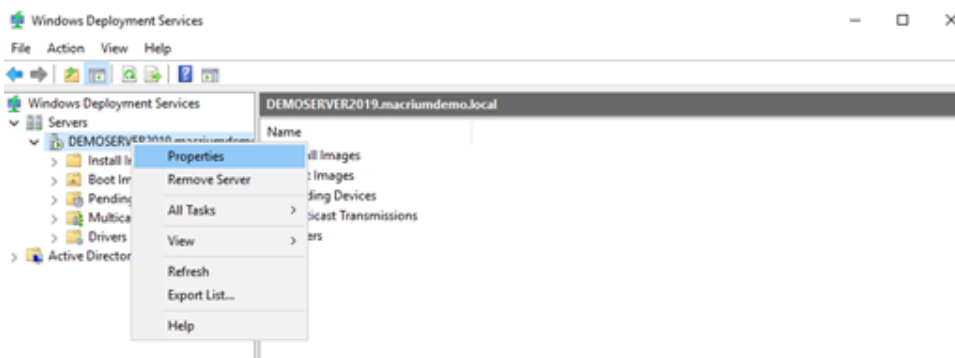
18. Wait for the WDS initial configuration to complete.



19. Click on "Finish" once the initial configuration is completed.



20. There are still a few things to set up. Right click on your server again and this time select "Properties".



21. Go to the PX Response tab. If you need to make any changes for your environment, change it here. Otherwise, leave the earlier selection of "Respond to all client computers (known and unknown)" as your choice.

DEMOSERVER2019 Properties ×

Multicast	Advanced	Network	TFTP
General	PXE Response	AD DS	Boot
		Client	DHCP

PXE Response Policy

Define which client computers this server will respond to. Known clients are clients that appear in the list of prestaged devices.

☐ Do not respond to any client computers
☐ Respond only to known client computers
☒ Respond to all client computers (known and unknown)

☐ Require administrator approval for unknown computers. When you select this option, you must approve the computers using the Pending Devices node in the snap-in. Approved computers will be added to the list of prestaged clients.

PXE Response Delay

Adjust how quickly this server responds to clients.

Delay in seconds:

22. Select the "Boot" tab and change the PXE Boot Policy. For known clients (computers that have already been identified on the network), select "Require the user to press the F12 key to continue the PXE boot". This will allow known clients to boot into their installed OS if you don't interact with the keyboard within the time limit.

For unknown clients, select "Always continue the PXE boot". This will ensure that new machines use PXE boot to get their base Macrium Deployment Kit image.

DEMOSERVER2019 Properties ✕

Multicast	Advanced	Network	TFTP
General	PXE Response	AD DS	Boot
		Client	DHCP

PXE Boot Policy
After a network boot is initiated, define when a PXE boot will continue.

Known clients:

- ☒ Require the user to press the F12 key to continue the PXE boot
- ☐ Always continue the PXE boot
- ☐ Continue the PXE boot unless the user presses the ESC key
- ☐ Never continue the PXE boot

Unknown clients:

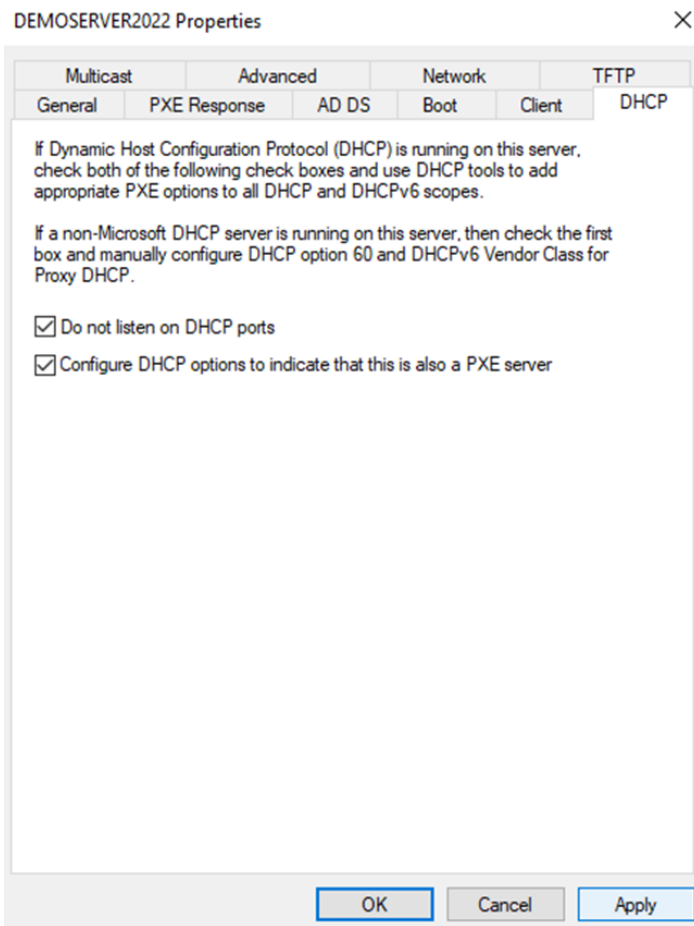
- ☐ Require the user to press the F12 key to continue the PXE boot
- ☒ Always continue the PXE boot
- ☐ Continue the PXE boot unless the user presses the ESC key
- ☐ Never continue the PXE boot

Default boot image (optional)

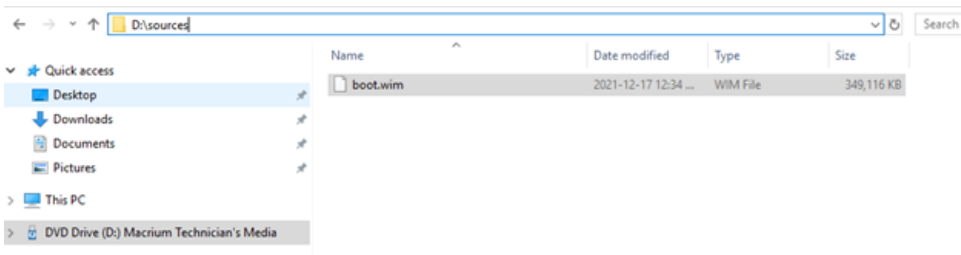
x86 architecture:	<input type="text"/>	Select...
x64 architecture:	<input type="text"/>	Select...
arm architecture:	<input type="text"/>	Select...
arm64 architecture:	<input type="text"/>	Select...
x86 (UEFI) architecture:	<input type="text"/>	Select...
x64 (UEFI) architecture:	<input type="text"/>	Select...

OK Cancel Apply

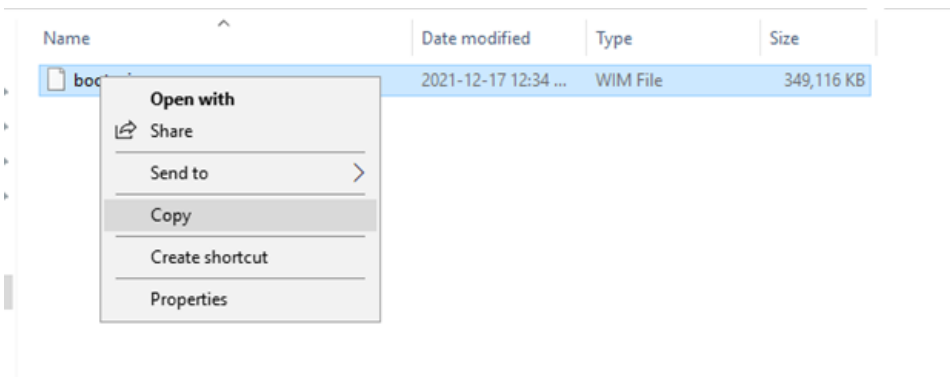
23. Because this is both the WDS and DHCP server, select the DHCP tab and ensure that both checkboxes are selected. This will automatically configure option 60 in DHCP.



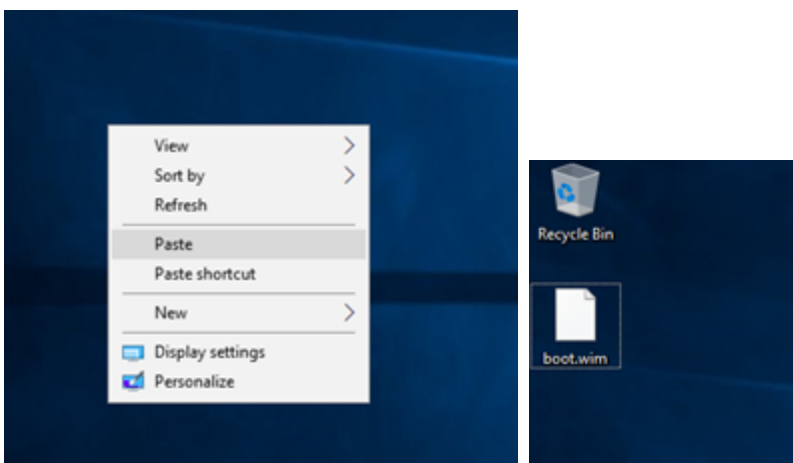
24. Now we need to add a boot image to the WDS server. Insert your Macrium Deployment Kit Technician's USB stick (or mount the ISO) to your server, and navigate to the sources folder. In this example, the USB stick is mounted as drive "D", so the path is "D:/Sources". You'll find the "boot.wim" boot image file there.



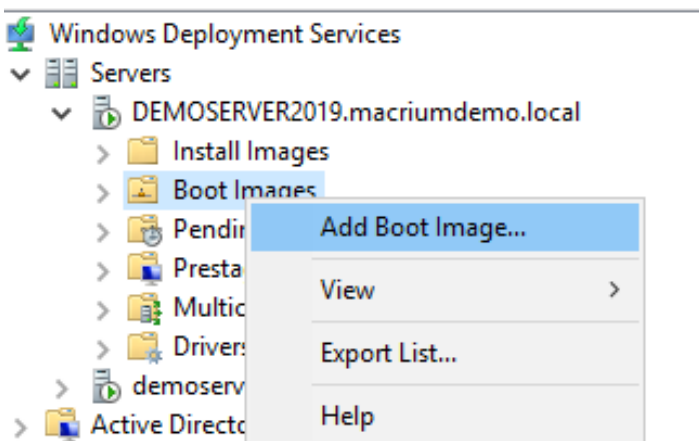
25. Right click on the "boot.wim" file and select "Copy".



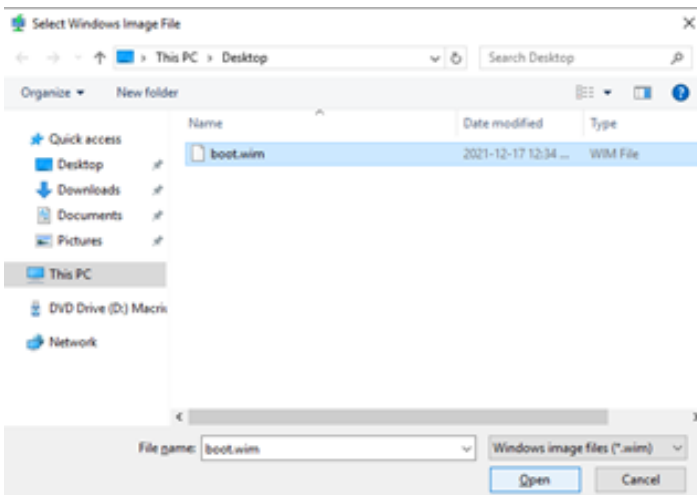
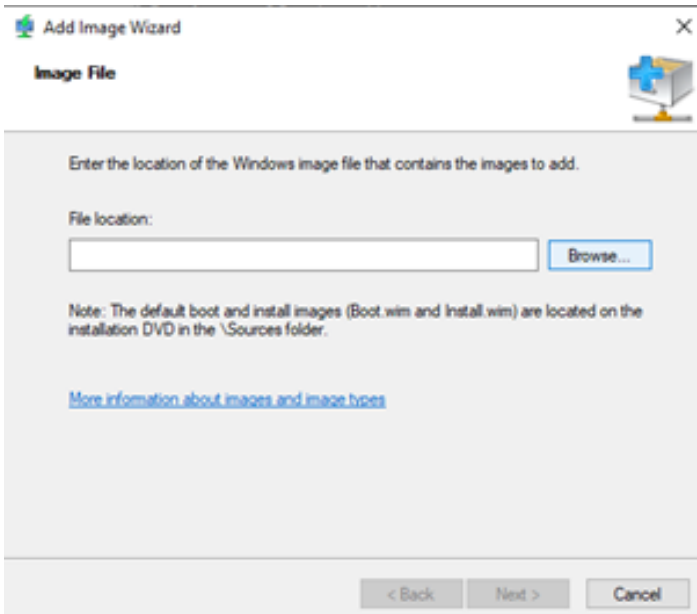
26. Go to your desktop, right click and select "Paste". You should see a copy of the "boot.wim" file on your desktop now.



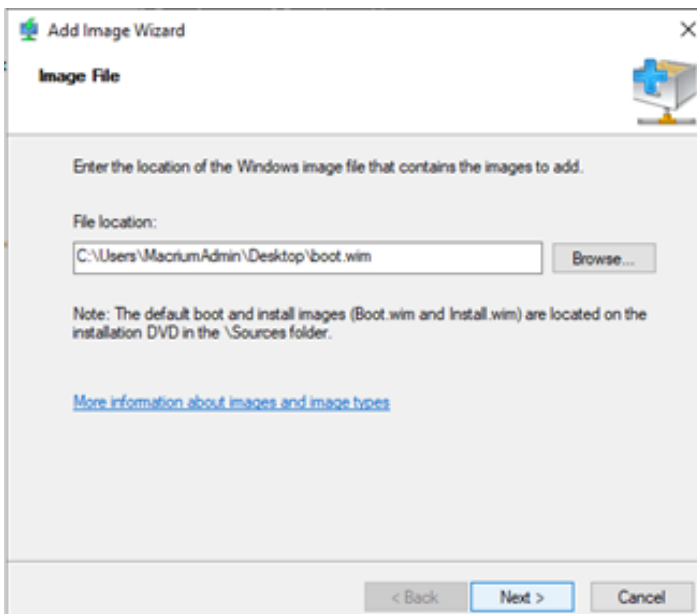
27. Go back to the WDS Console, expand your server, and right click on "Boot Images". Select "Add Boot Image".



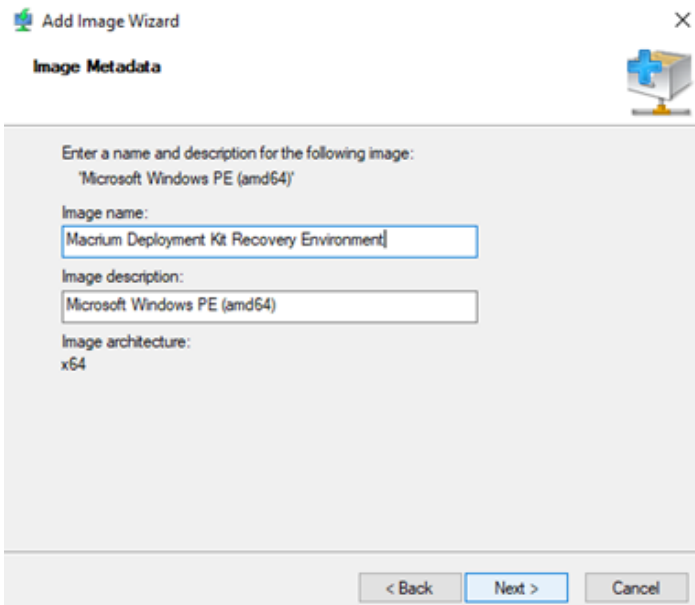
28. Click "Browse" and go to your desktop. Double-click on the "boot.wim" file we copied over above.



29. Confirm the path and click "Next".



30. Give the image a name and description. For this example, we used "Macrium Deployment Kit Recovery Environment" as the Image Name, and "Microsoft Windows PE (amd64)" as the description. Click "Next" when done.



The screenshot shows the 'Add Image Wizard' dialog box with the 'Image Metadata' tab selected. The dialog has a title bar with a close button (X) and a help icon. The main area contains the following text and input fields:

Enter a name and description for the following image:
'Microsoft Windows PE (amd64)'

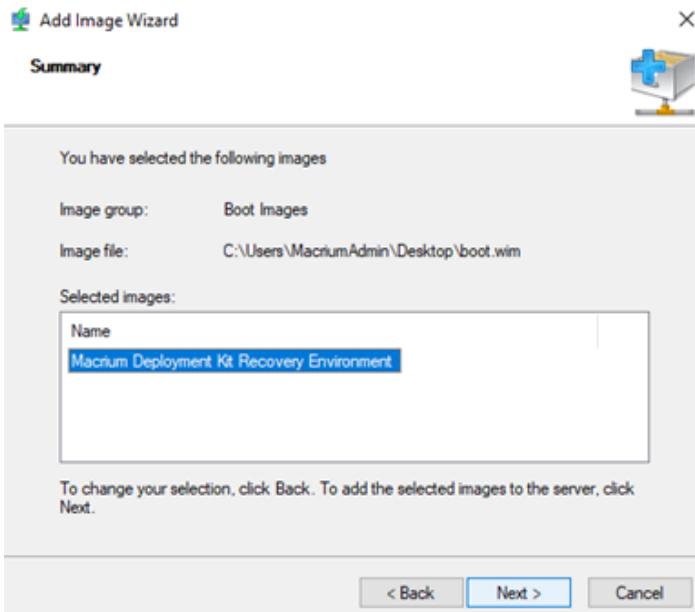
Image name:

Image description:

Image architecture:
x64

At the bottom, there are three buttons: '< Back', 'Next >', and 'Cancel'.

31. Review the final summary, and click "Next".



The screenshot shows the 'Add Image Wizard' dialog box with the 'Summary' tab selected. The dialog has a title bar with a close button (X) and a help icon. The main area contains the following text and input fields:

You have selected the following images

Image group: Boot Images

Image file: C:\Users\MacriumAdmin\Desktop\boot.wim

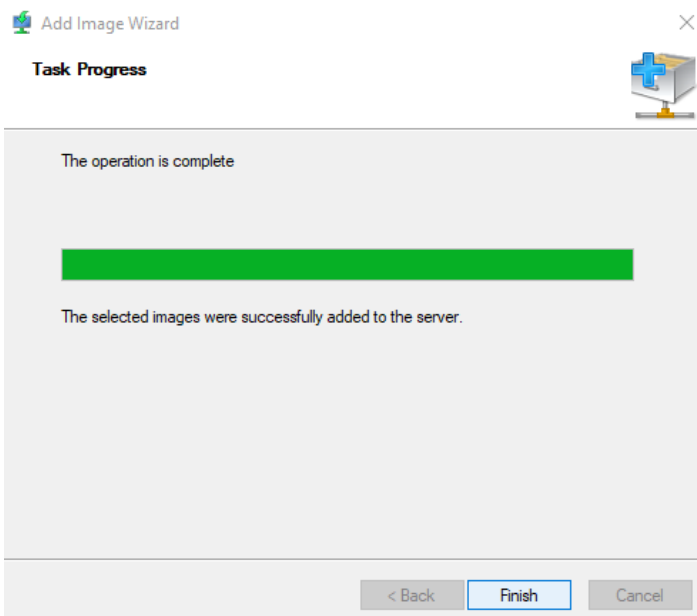
Selected images:

Name
Macrium Deployment Kit Recovery Environment

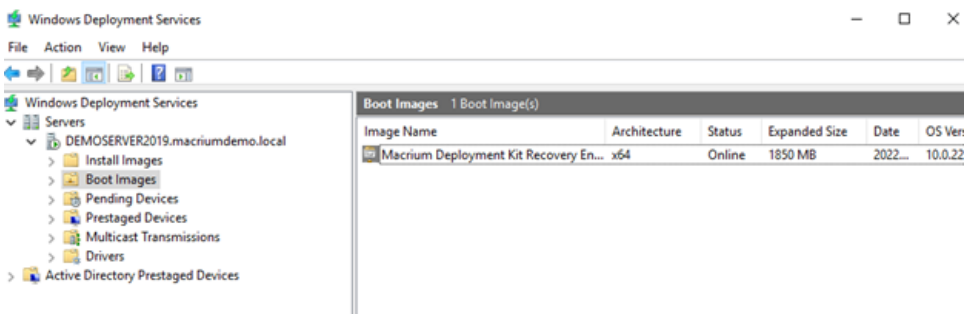
Below the table, there is a message: "To change your selection, click Back. To add the selected images to the server, click Next."

At the bottom, there are three buttons: '< Back', 'Next >', and 'Cancel'.

32. Wait for the operation to complete and click "Finish".



33. Confirm the boot image by going back into the WDS Console, click on "Boot Images" and see your new boot image in the right-hand pane.



WDS is setup and ready, however you still need to ensure that DHCP is installed on this server and that option 60 is enabled to have PXE compatible systems boot into this Macrium Deployment Kit Recovery Environment.

See [Installing and Configuring DHCP for PXE Boot on Windows Server 2016 2019 2022](#)