

Drive letters assigned to restored or cloned partitions

This article explains how to change the drive letters of restored or cloned partitions during and after the restore or clone process.

- [How Windows assigns drive letters to mounted volumes \(drives\) on your system](#)
- [Changing drive letters in the 'Restore Wizard' or 'Clone Wizard' when running Reflect in Windows](#)
- [Changing drive letters using the Windows Disk Management Console after restoring or cloning](#)

How Windows assigns drive letters to mounted volumes (drives) on your system

Windows maintains driver letter persistence by storing a reference to each mounted volume and drive letter in the system registry using the following registry key

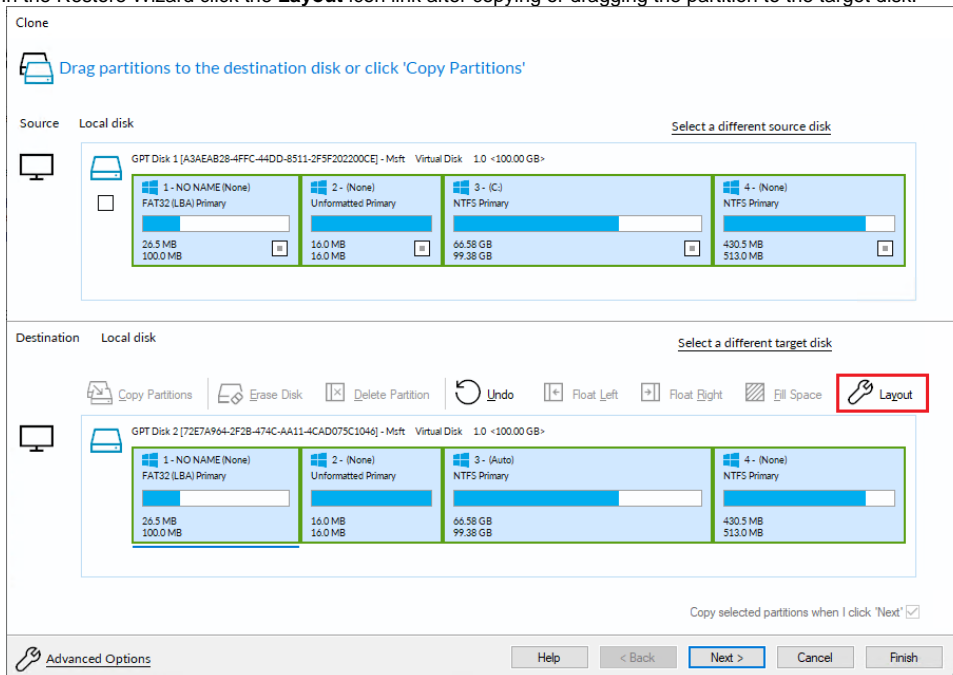
```
HKEY_LOCAL_MACHINE\SYSTEM\MountedDevices
```

<https://technet.microsoft.com/en-us/library/cc978525.aspx>

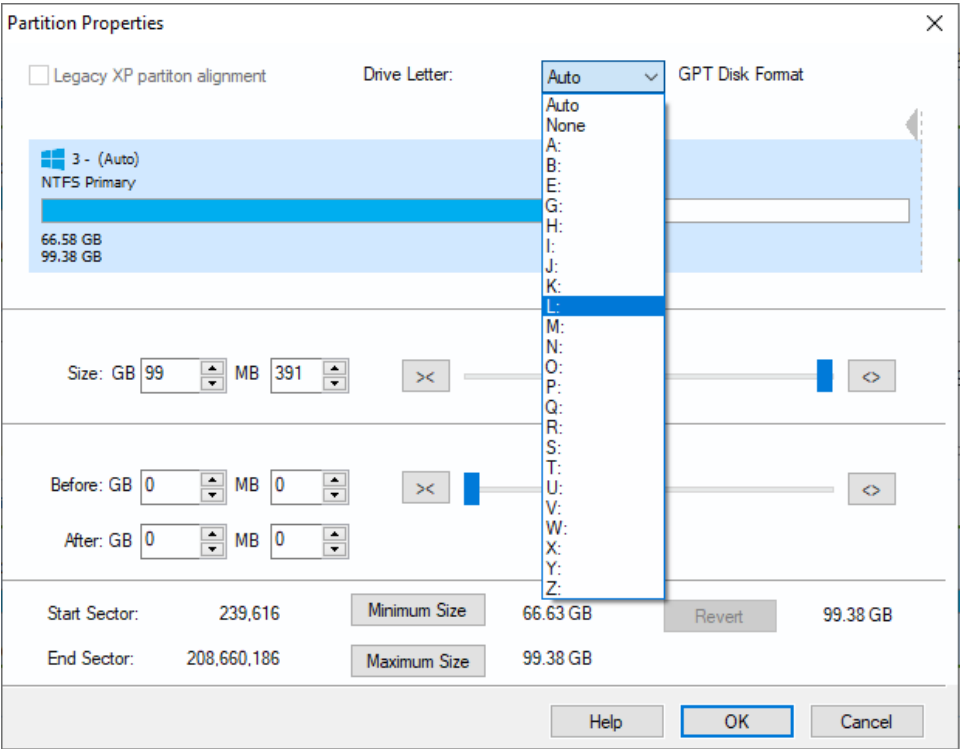
Note: When restoring using the **Windows PE** rescue media, the letters assigned to restored partitions are **temporary** for that Windows PE session only. When you **boot into the restored system**, drive letter assignments will be **exactly the same** as they were when the image was created.

Changing drive letters in the 'Restore Wizard' or 'Clone Wizard' when running Reflect in Windows

1. In the Restore Wizard click the **Layout** icon link after copying or dragging the partition to the target disk:



2. In the 'Partition Properties' dialog click the **Drive Letter** combo box:



Property	Description
Auto	Let Windows automatically assign the next available drive letter
None	No drive letter will be assigned to the restored partition
Letter	Select a drive letter to use from the list of free letters. The original drive letter will be selected by default.

Changing drive letters using the Windows Disk Management Console after restoring or cloning

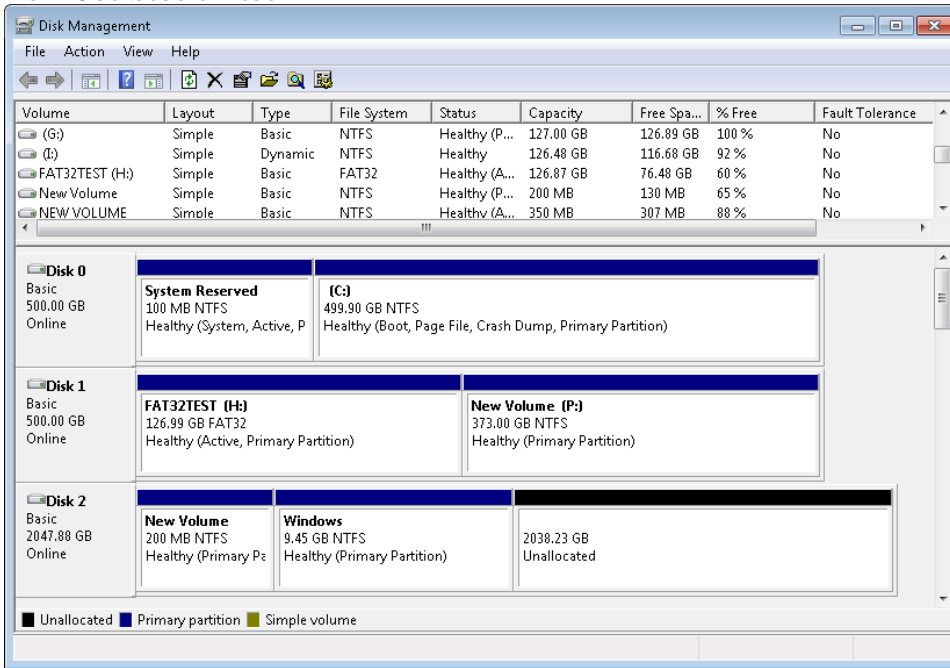
Windows ships with a utility to maintain local drives and partitions called the **Windows Disk Management Console (DMC)**. Using the DMC you can easily change the drive letters assigned to any partition on your system, (except for your system drive C:),

1. To start the Windows Disk Management Console

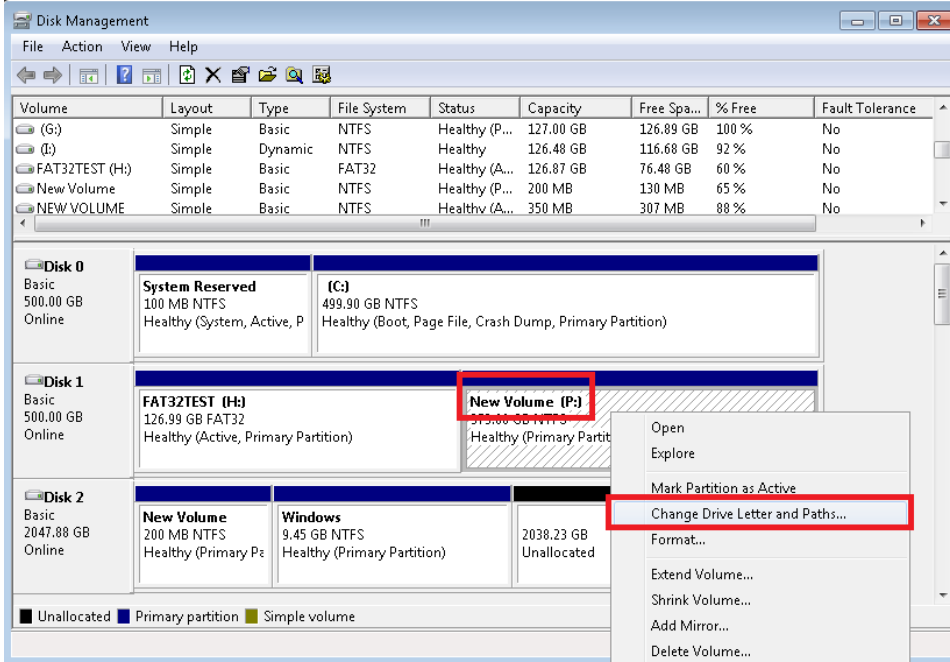
Click 'Start' or press the Windows Key, Type the following, and press enter:

```
diskmgmt.msc
```

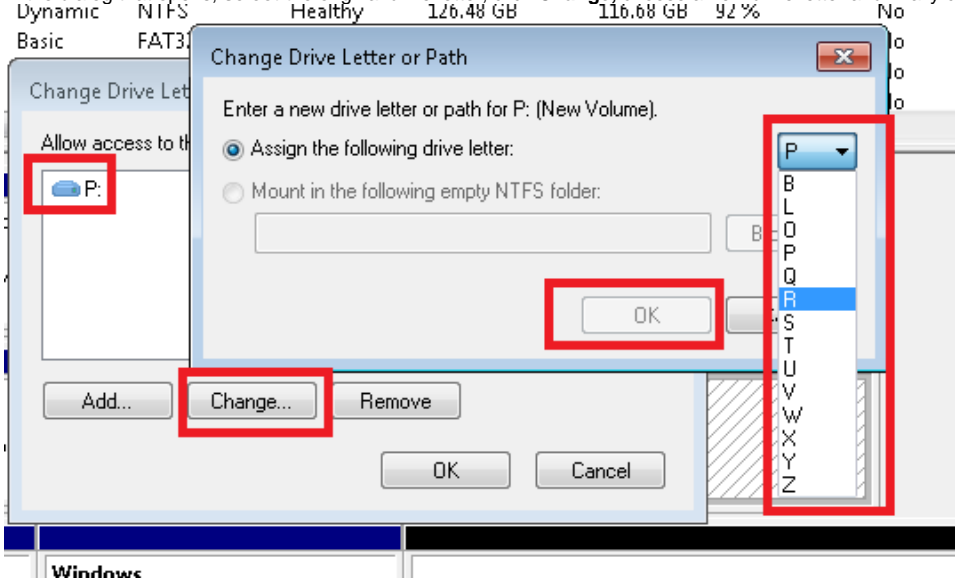
2. The DMC starts as shown below:



3. Right-click on the partition that you want to change in the lower pane and select **Change drive letters and paths**:



4. In the dialog that opens, **select** the original drive letter, click **Change**, choose a new drive letter and finally click **OK**.



See also:

[Restoring and browsing](#)
[Restoring an image from within Windows](#)
[Restoring a System image from Windows](#)
[Modifying restore destination partition properties](#)