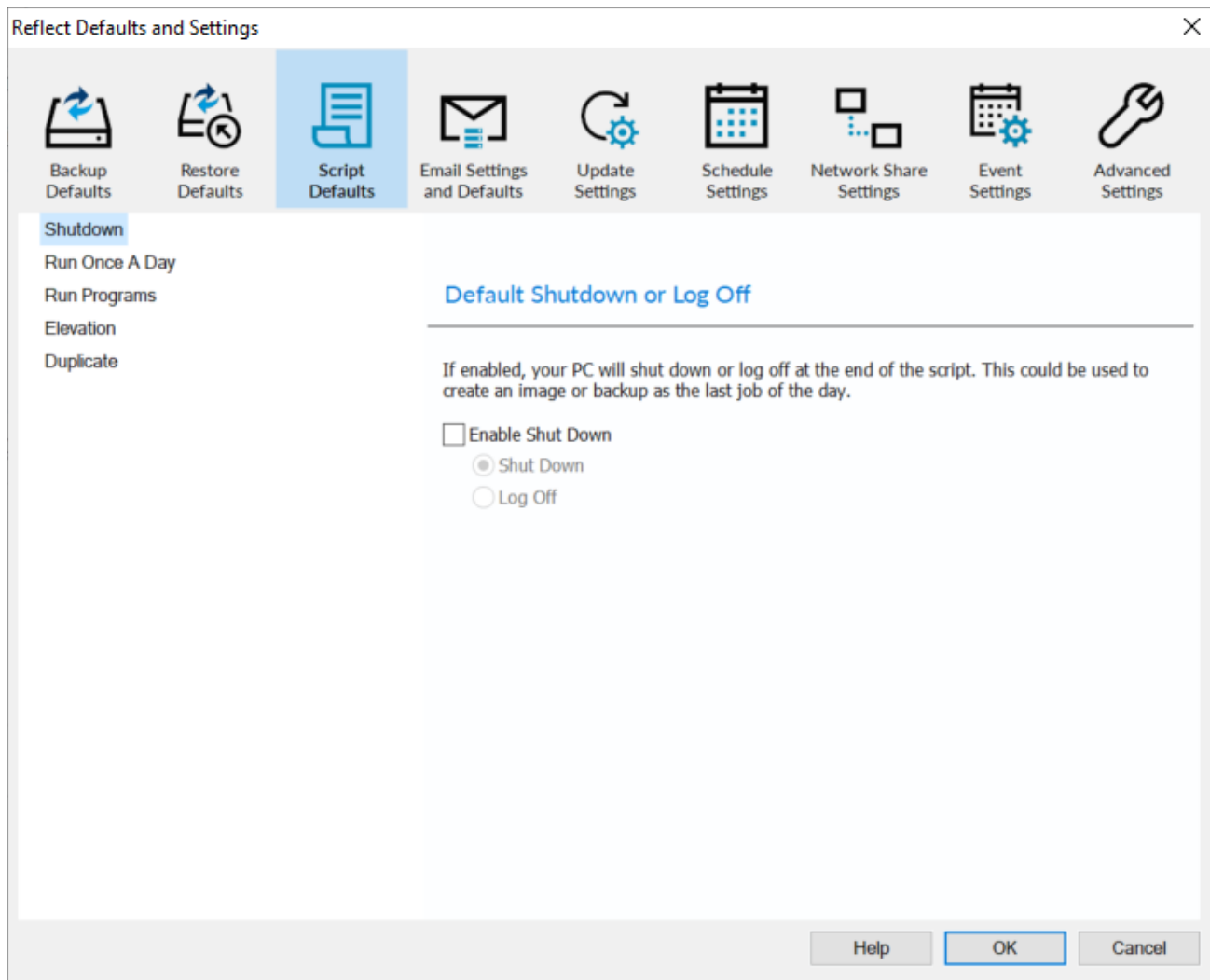


Script Defaults

- [Default Shutdown or Log Off](#)
- [Default Run Once a Day](#)
- [Default Run Programs and Scripts](#)
- [Default Script Elevation](#)
- [Default Directory Synchronization](#)

Default Shutdown or Log Off

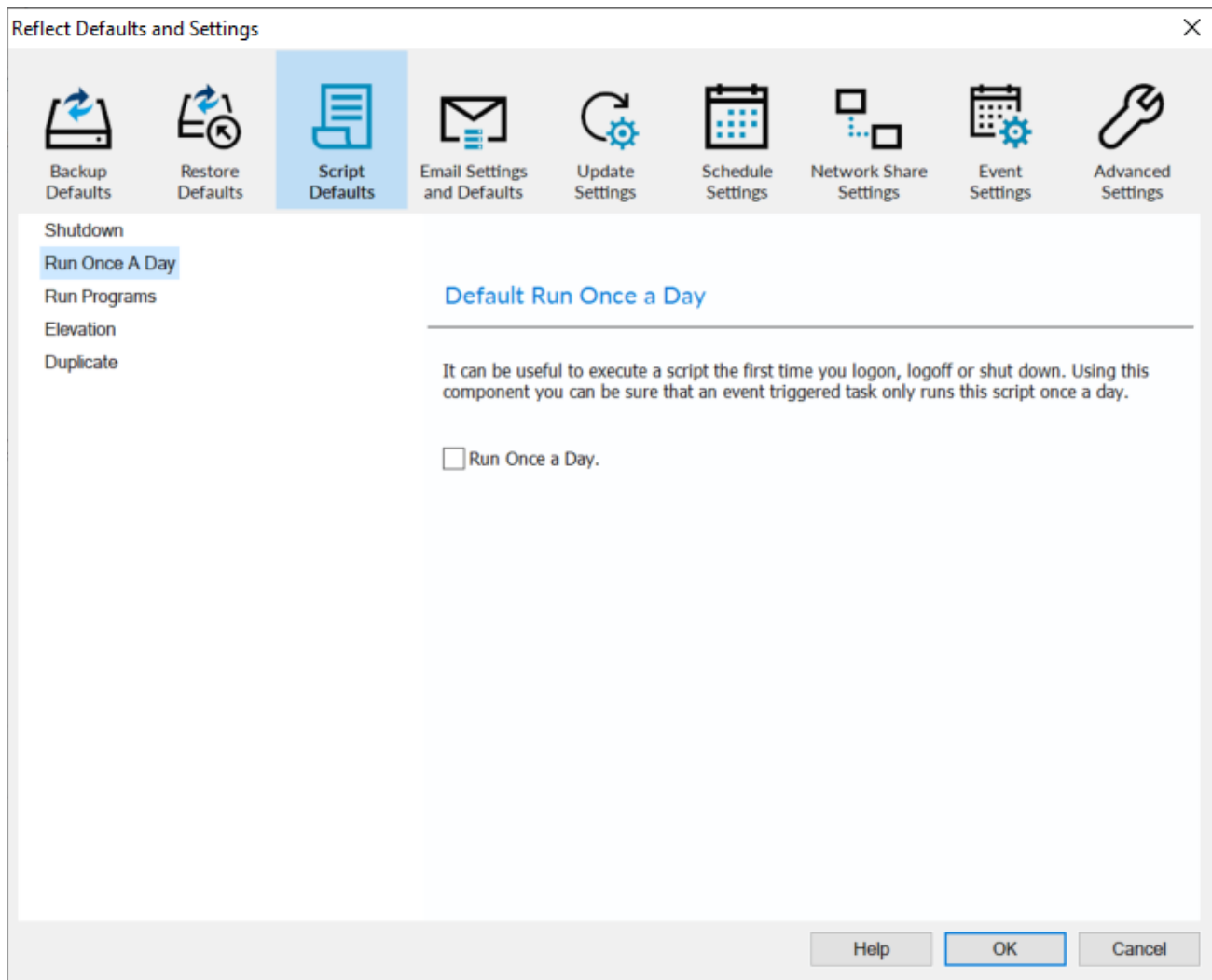
Sets whether the PC should shutdown or log off at the end of the script.



This could be used when creating a backup as the last job of the day.

Default Run Once a Day

Whenever the script is triggered, either manually or on schedule, it will only execute the first time for each day.












For example, this could be useful if you want a backup to happen at first login or shutdown.

Default Run Programs and Scripts

Select programs or scripts to run at the start or end of the script.

Reflect Defaults and Settings ✕

 Backup Defaults
  Restore Defaults
  **Script Defaults**
 Email Settings and Defaults
  Update Settings
  Schedule Settings
  Network Share Settings
  Event Settings
  Advanced Settings

Shutdown
 Run Once A Day
Run Programs
 Elevation
 Duplicate

Default Run Programs and Scripts

☐ Run a program or script at the start.
 File name:
 Parameters: ...

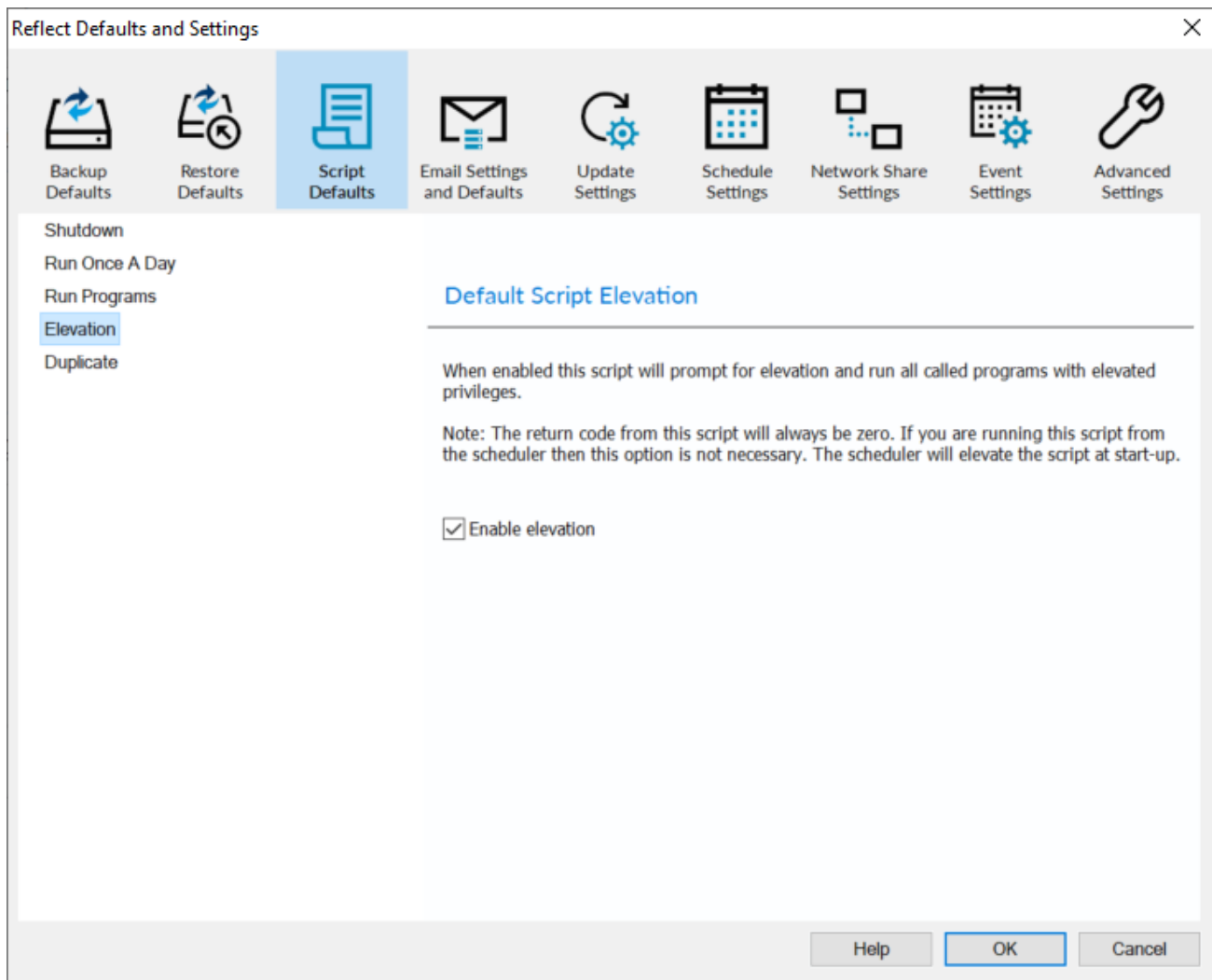
☐ Run a program or script at the end.
 File name:
 Parameters: ...

Help OK Cancel

Option	Description
File name	Write the path and executable file name that you wish to run at the start of the script.
Parameters	Include optional command line parameters for the program.
File name	Write the path and executable file name that you wish to run at the end of the script.
Parameters	Include optional command line parameters for the program.

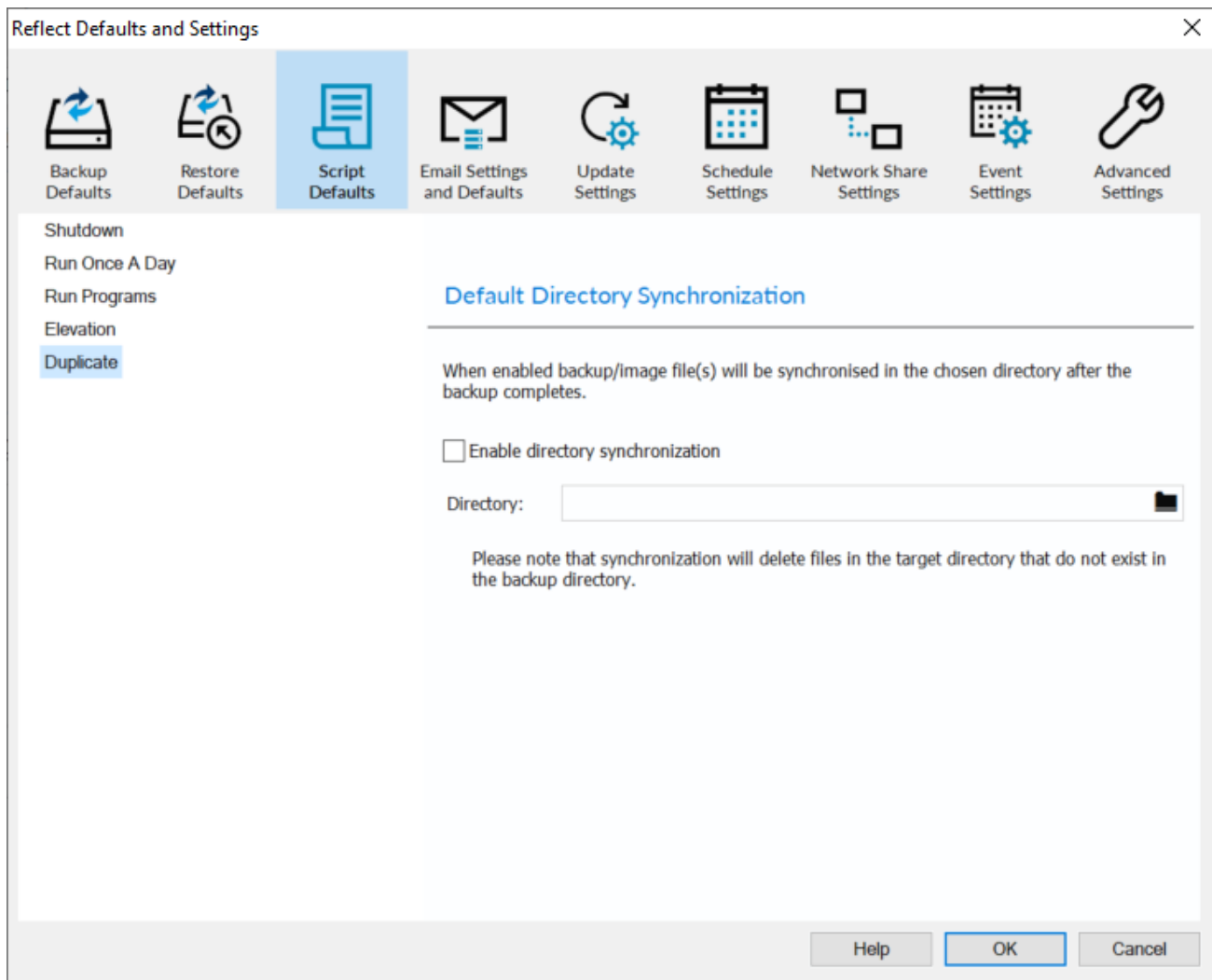
Default Script Elevation

Elevate the script at the beginning of execution. This ensures that all Programs and Script called will already be elevated.



The return code will always be zero. If you are running scripts from the scheduler then this option is not necessary. The Task Scheduler will elevate the script at startup.

Default Directory Synchronization



Directory	Enter the target folder for the copy/archive.
Enable file copy	If enabled the backup will create a copy of the files from the backup to the supplied destination.

Directory Synchronization will embed MS RoboCopy calls to the script