

Installation and Update

Installing the Site Manager Service

The Site Manager service can be installed on any computer or Virtual Machine running Windows 7/Windows Server 2008 R2 or greater. As the service must be running to perform scheduled backups, it should be installed on a computer which is not turned off during these times.

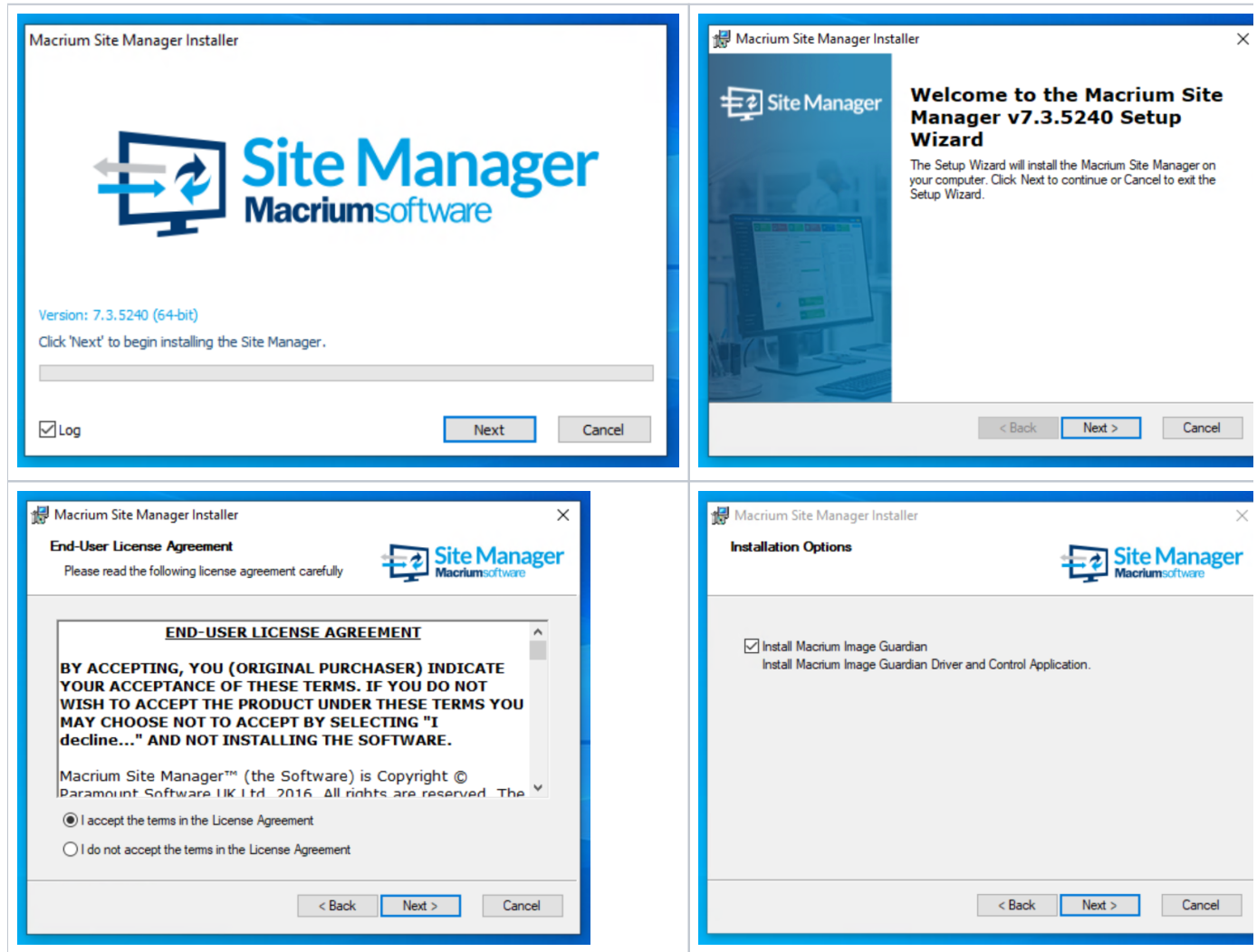
Download

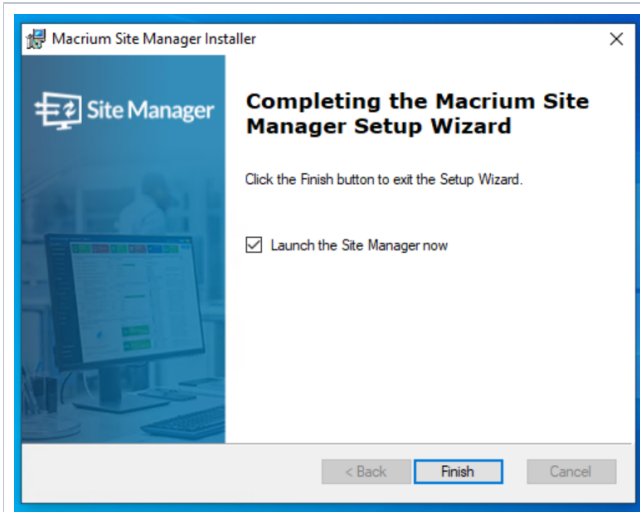
The Site Manager Server is available for download as either a 32-bit Windows Installer or a 64-bit Windows Installer. The version installed must match the architecture of the Windows OS.

[Download Site Manager for Windows 64-bit](#)

[Download Site Manager for Windows 32-bit](#)

The installer provides a standard install interface:





Install Options

During install, The following options are available:

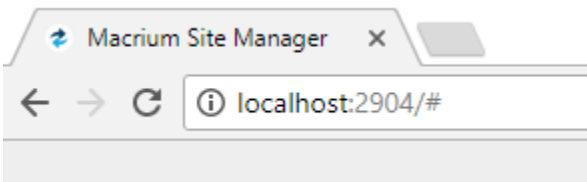
Option	Description
Install Macrium Image Guardian	If selected, the Macrium Image Guardian driver and configuration application will be installed with Site Manager. This can be used to provide additional anti-malware and anti-ransomware protection of Site Manager backup image files. See Macrium Image Guardian for more information
Launch the Site Manager now	If selected, a web browser will be launched with the Site Manager interface after Finish is pressed.

Initial Configuration

Once installed use a local web browser to connect to the running server on the default port 2904. (<http://localhost:2904>).

Upgrade Installs

 If you are upgrading from a previous installation of Site Manager, the protocol (http or https) and port will be set to the previously configured values



The first time you access the web interface, you will be prompted to select a security level to complete the security configuration:

Welcome to the Macrium Site Manager

Please choose an initial security configuration profile:

Simple Setup

Recommended setup for test environments.

This will configure the following options:

- HTTPS will be disabled
- Login will not be required to access the Site Manager

Simple Setup

Secure Setup

Recommended setup for production environments.

This will configure the following options:

- HTTPS will be enabled
- Login from an account with Administrator privileges will be required to access the Site Manager

Secure Setup

Import Setup File

This copies the configuration of another Site Manager Server.

Upload the settings files of another Site Manager instance to copy its configuration.

The uploaded file must be the configuration archive generated by another Site Manager.

Import Setup

Please note that, whichever configuration you choose, all user data communication is encrypted using AES-256 encryption.

If you choose settings which result in the initialised Site Manager either using a different protocol or a different port then the browser URL must be changed to reflect this. For example, if this page is at <http://yourserveraddress> and the initialised Site Manager is to be accessed using HTTPS then the URL must be changed to <https://yourserveraddress>.

After choosing a profile the server will perform a quick restart to apply the new settings.

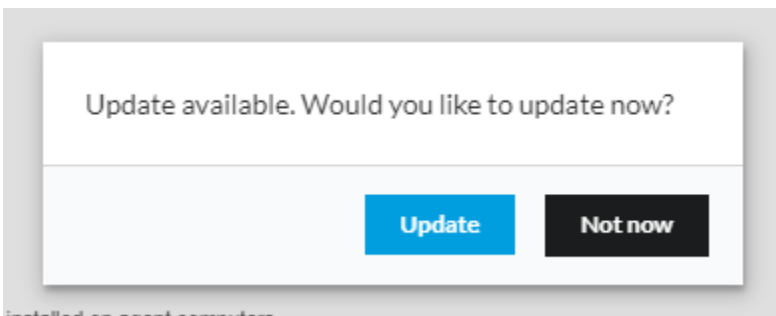
The recommended security level is **Simple Setup** for internal and test installations and **Secure Setup** for production environments. **Import Setup File** may also be chosen to import a saved configuration from another Site Manager server.

Note: These security settings may be changed at any time from the **Settings** page of Site Manager.

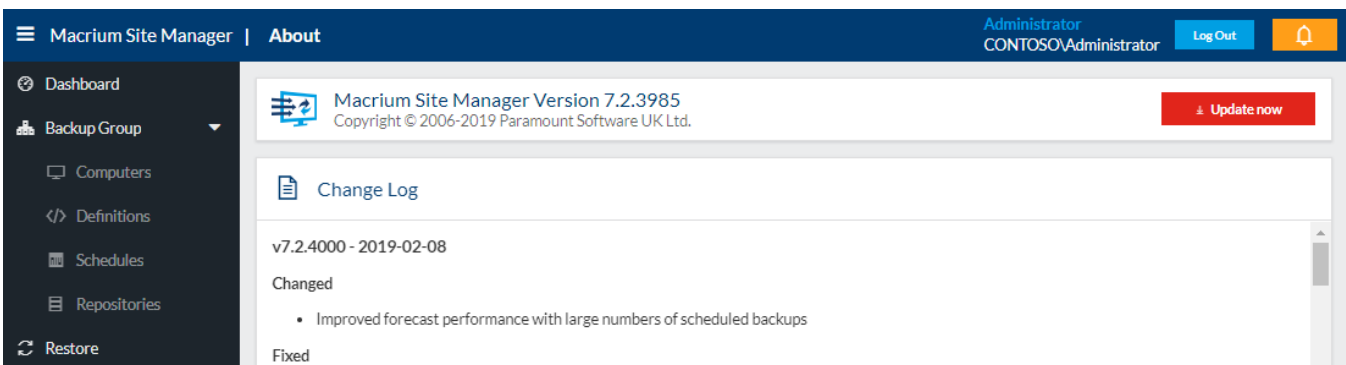
After selecting your security configuration Site Manager will immediately restart

Update

The Site Manager service will periodically check for updates with Macrium servers. If there is an update available, the following message will be shown on login:



If you click **OK** on this message or visit the **About** page, an **Update Now** button will be displayed:



Clicking this will download the update, apply it and automatically restart the Site Manager service. When the Site Manager service restarts, it will update the individual agents which are connected. Any offline agents will be updated as soon as they connect to the Site Manager.

Any backups in progress during the update will continue and the agent performing the backup will not be upgraded until the backup has completed.

Due to the time and network traffic that upgrading causes, we recommend that upgrading the Site Manager is only done when there are no scheduled backups running.