

# Backing up MS SQL Databases

With Macrium Reflect Server Plus you can backup SQL databases. From SQL Server 2005 onwards, all versions of Microsoft SQL Server and Microsoft Server Express are supported. SQL Server 2000 and earlier are not supported.

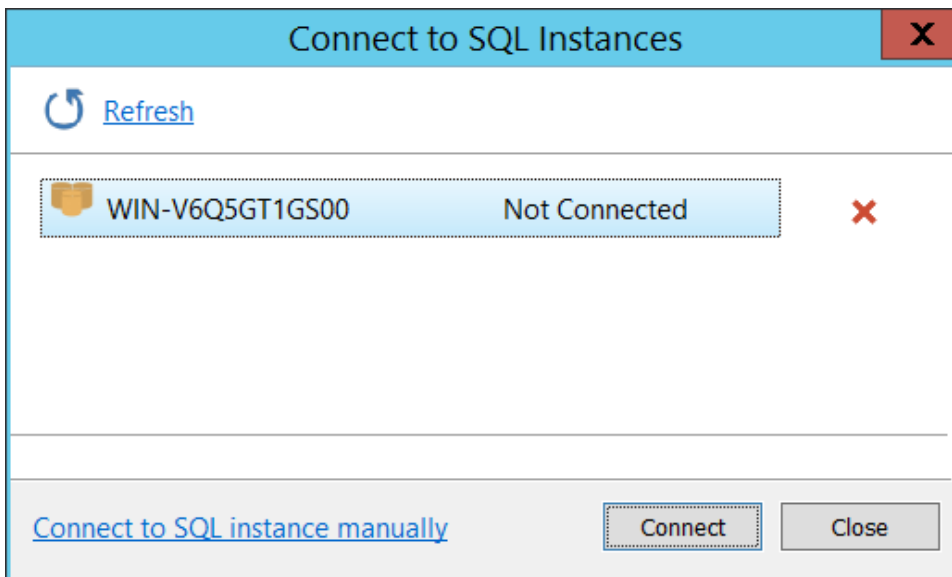
- [Connecting to SQL and creating a full backup](#)
- [Creating differential and log backups](#)
- [Related articles](#)

## Connecting to SQL and creating a full backup

1. Select **Manage SQL Logins**.



2. Macrium Reflect scans your local PC for installed instances of SQL Server and displays them:



3. If necessary, enter details manually, select **Connect to SQL instance manually**.
4. Select the instance you wish to connect to and click **Connect**.
5. Enter the required login criteria and click **Connect**.

## Connect to Server

### Connect to an SQL Instance

---

**Instance:** WIN-V6Q5GT1GS00

**Authentication:** Windows Authentication ▼

**User:**

**Password:**

Connect
Cancel

If successful, the instance shows as **Connected**.

6. Select **Backup SQL Databases**:

### Select the SQL Databases to Backup and the Backup Destination

---

**Databases**

WIN-V6Q5GT1GS00

- (local)
  - ☐ master
  - ☐ model
  - ☐ msdb
  - ☒ ReportServer
  - ☐ ReportServerTempDB

+ [Add new instance](#)
↺ [Refresh](#)

---

**Destination** E:\ ...

[Alternative locations](#)

⚙️ [Advanced Options](#)

< Back
Next >
Cancel
Finish

This displays all the databases associated with the instances of SQL that you have logged into.

7. Select the databases you wish to backup.

8. Set the destination directory for the image files (in this case E:\ drive) and if necessary any alternative locations.

[Alternative Locations](#) can be used to provide backup rotations or as a fail safe for temporary unavailability of the primary backup destination.

9. If required, add new instances and refresh the list as required.
10. Click **Next**.
11. Make required edits to the backup plan, for more information see [Scheduling backups](#).

**Edit the Plan for this Backup**

**1. Add/Edit Schedules**

Backup Type	Schedule
-------------	----------

Add Schedule
 Edit Schedule
 Delete Schedule

**2. Define Retention Rules**

☒ Purge Full backup sets
 Keep  Backups

☐ Run the purge before backup.

[Advanced Options](#)

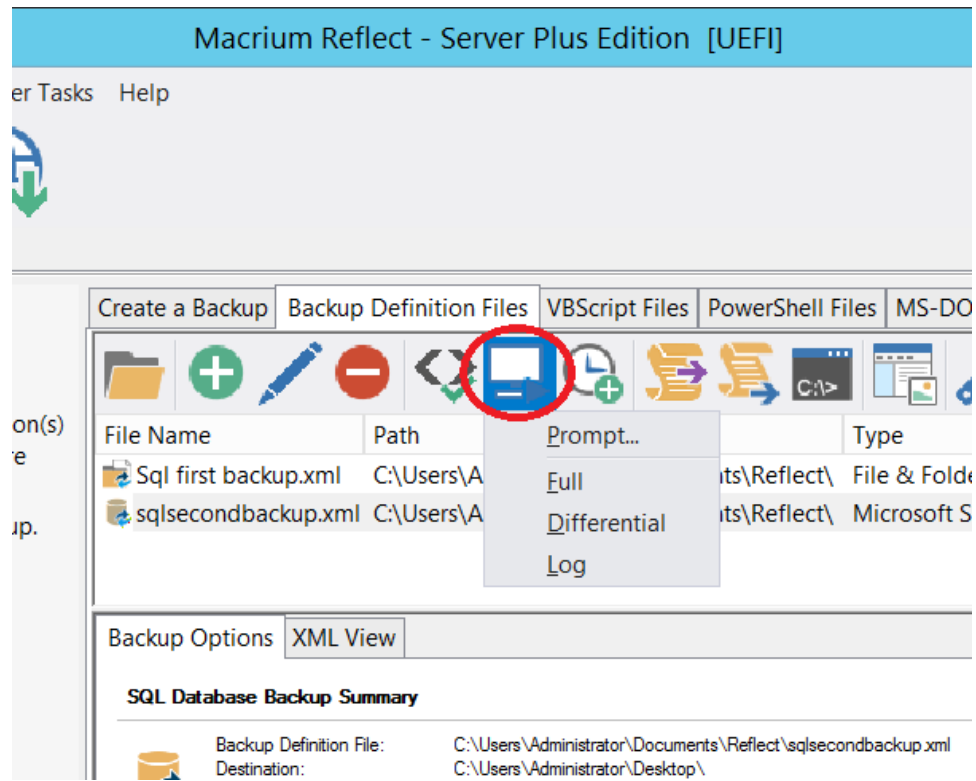
12. If required, click **Advanced Options** to modify aspects of the backup; Compression, File Size, Password, Auto Verify Image, Comments, Reparse Points and Shutdown. When you are happy to proceed, click **OK**.
13. Click **Finish**.
14. Just as in normal imaging, you are offered the ability to save your configuration as an XML definition file for later reuse. Name the backup and click **OK** to run the backup.

## Creating differential and log backups

To create a differential or log backup, it is important to ensure that you have already created an SQL XML definition file and run a full backup.

**Note:** It is not possible to create log backups of database using the Simple recovery model.

1. Go to **Backup Definition Files** and select the XML file you wish to perform an log or differential backup of.
2. Select **Run** or right-click on the XML file you wish to run.



3. Select the type of backup you wish to run.

The backup should run immediately.

## Related articles

- [Backing up MS SQL Databases](#)
- [Stopping the SQL Server service automatically when backing up](#)
- [Macrium Reflect Server Plus for Exchange and SQL](#)
- [Can't see SQL Instances in Login Window](#)
- [Restoring MS SQL](#)