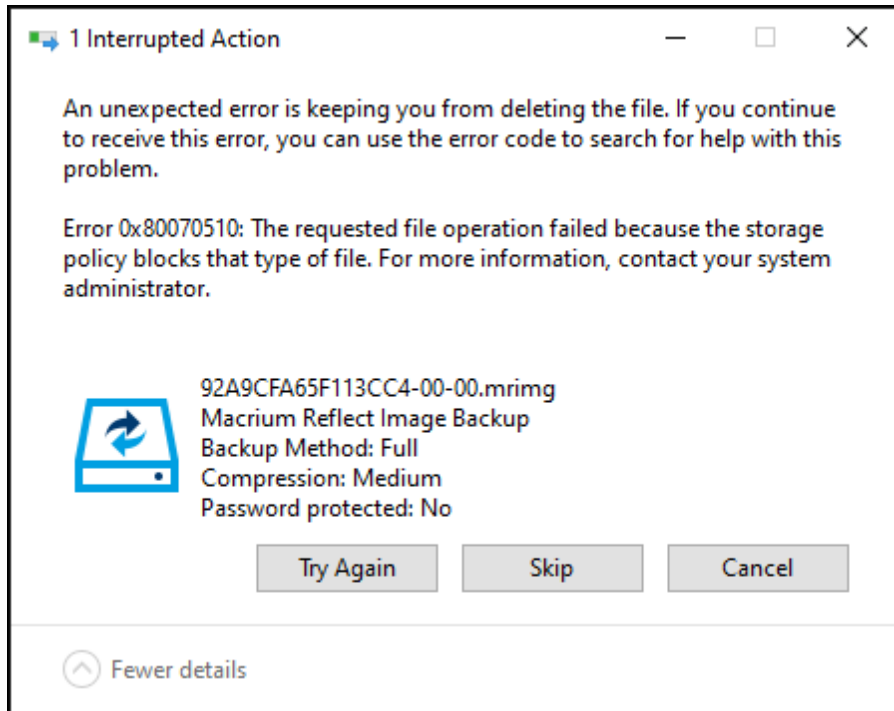


Error 0x80070510 when deleting backup files

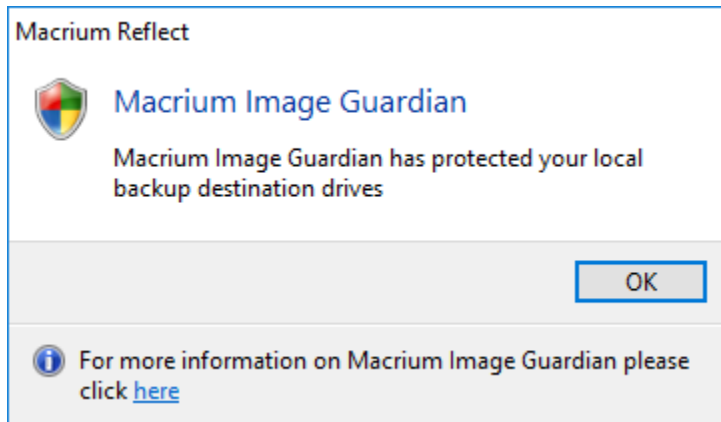
When deleting or moving backup files using Windows Explorer you may see the following error message:



This is normal behavior and indicates that the drive is protected with [Macrium Image Guardian](#).

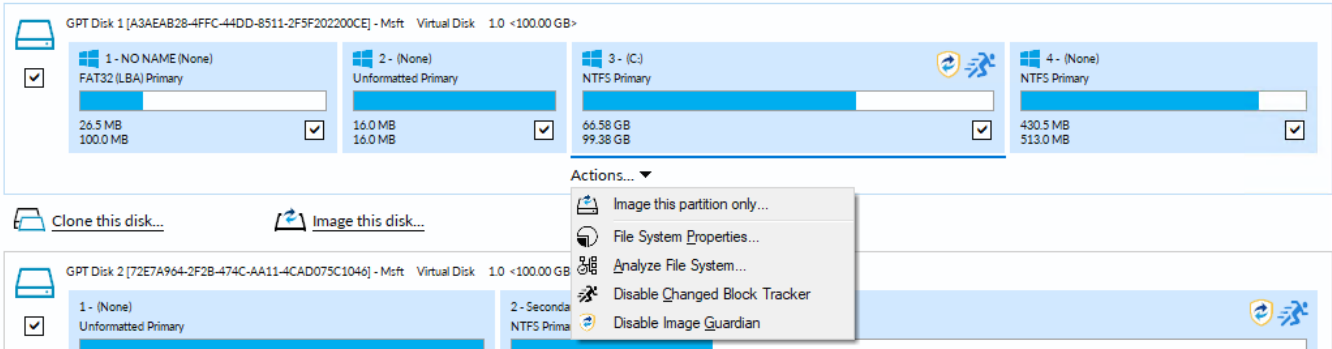
MIG is a new feature of Macrium Reflect v7.1 and will automatically protect local backup drives from accidental deletion and ransomware.

If you have updated from an earlier release of Macrium Reflect, and backup drives have been protected, then you will see the following message box the first time Macrium reflect is started:

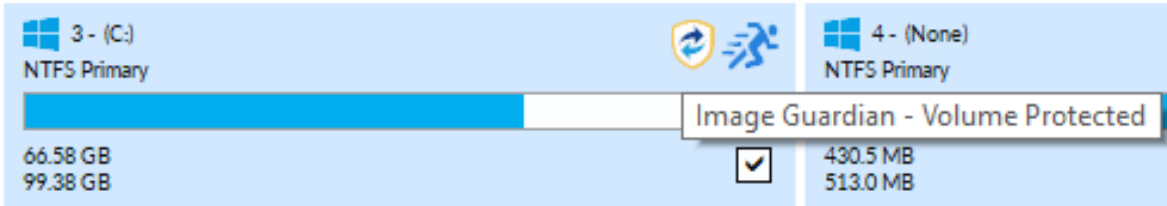


Enabling and Disabling MIG on NTFS Volumes

MIG can be enabled or disabled on any **NTFS volume** by using the **Actions** menu in the Macrium Reflect main window.



A **MIG** shield indicates that a volume is protected:



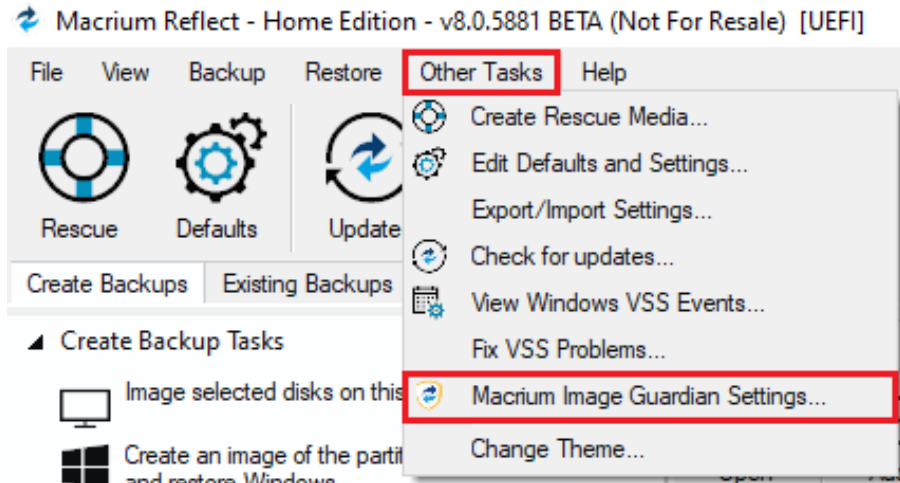
Automatic Protection

Please note that if the option to '**Automatically protect local backup drives**' is selected in the MIG settings dialog, then **unprotected volumes** will be **automatically protected** when the next backup runs to the volume, or on reboot, if the volume contains the path of a backup destination saved in a backup definition.

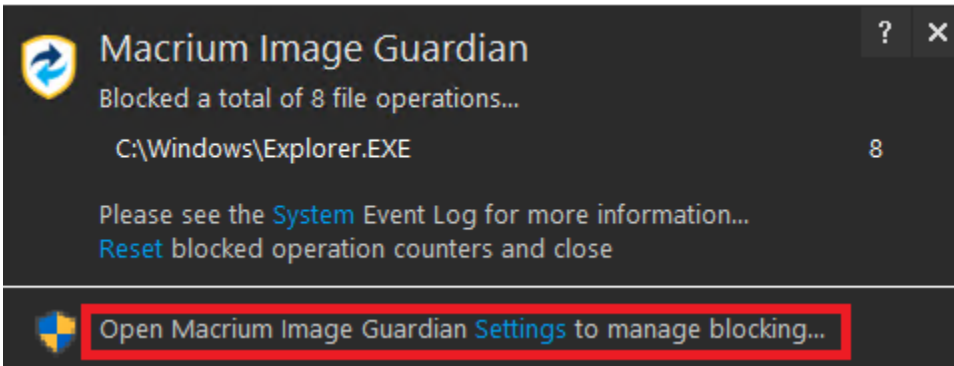
Activating Macrium Image Guardian

MIG is active directly after installation and will automatically protect backup destination drives.

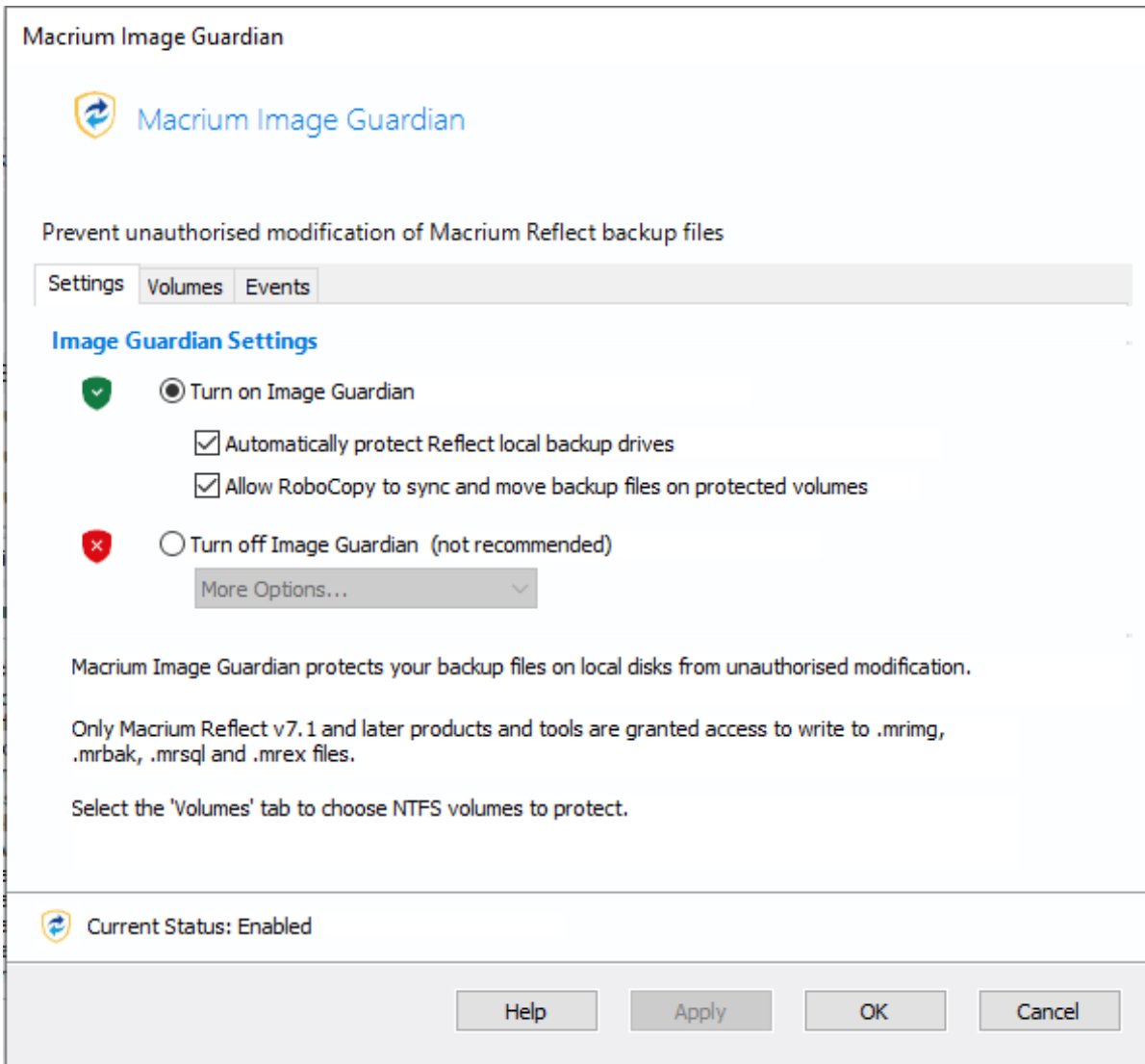
To turn MIG on, off, or temporarily disable take the **Other Tasks** menu, then select the **Macrium Image Guardian Settings...** menu option.




You can also activate the MIG Settings dialog by clicking **Settings** in the MIG blocked activity popup.



The MIG Settings dialog





Turn on Image Guardian	Starts the Image Guardian Service
-------------------------------	-----------------------------------


<p>Automatically protect local backup drives</p>	<p>When turned on, all saved backup definitions are searched and Image Guardian is enabled for local backup drives</p> <p>When creating a new backup, unprotected target drives will be automatically protected by enabling Image Guardian on the drive.</p> <p>When the PC is restarted, Image Guardian will be re-enabled on all backup drives. This prevents accidentally leaving your drives unprotected by manually turning protection off.</p>								
<p>Allow RoboCopy to sync and move backup files on protected volumes</p>	<p>Enables the MS utility RoboCopy to delete and overwrite backup files on protected volumes with the /MOV, /MOVE, /PURGE and /MIR parameters.</p> <table border="1" data-bbox="347 367 1484 835"> <thead> <tr> <th>Parameter</th> <th>Rule</th> </tr> </thead> <tbody> <tr> <td>/MOVE /MOV</td> <td> <p>If the source folder is on a protected volume then the /MOVE /MOV parameters will only delete backup files in the source folder if the destination folder is also on a protected volume.</p> <p>This ensures that existing files cannot be moved to an unprotected volume and compromised.</p> </td> </tr> <tr> <td>/MIR /PURGE</td> <td> <p>If the target folder is on a protected volume then the the /MIR /PURGE parameters will only delete backup files in the target folder if both of the following conditions are true:</p> <ol style="list-style-type: none"> 1. The source folder is a backup destination in any saved backup definition xml file. 2. The target folder is not a backup destination in any saved backup definition xml file <p>This ensures that the synchronisation operation cannot inadvertently, or otherwise, delete files in a folder that is used as a backup destination in Macrium Reflect.</p> </td> </tr> <tr> <td>All overwrite operations</td> <td> <p>If the result of any parameter is to overwrite an existing backup file on a protected volume then this will only be allowed if the target folder is not a backup destination in any saved backup definition xml file.</p> </td> </tr> </tbody> </table> <p>RoboCopy and Network Shares</p> <p> If the source of a /MOVE /MOV or target of a /MIR /PURGE operation is a MIG protected volume on a network share then all delete operations are blocked. This is because RoboCopy 'Rules' can only be applied if the Windows session that's opening the files is the same Windows session that's running RoboCopy. In the case of a network share, the remote computer is opening the files and will block all delete operations.</p>	Parameter	Rule	/MOVE /MOV	<p>If the source folder is on a protected volume then the /MOVE /MOV parameters will only delete backup files in the source folder if the destination folder is also on a protected volume.</p> <p>This ensures that existing files cannot be moved to an unprotected volume and compromised.</p>	/MIR /PURGE	<p>If the target folder is on a protected volume then the the /MIR /PURGE parameters will only delete backup files in the target folder if both of the following conditions are true:</p> <ol style="list-style-type: none"> 1. The source folder is a backup destination in any saved backup definition xml file. 2. The target folder is not a backup destination in any saved backup definition xml file <p>This ensures that the synchronisation operation cannot inadvertently, or otherwise, delete files in a folder that is used as a backup destination in Macrium Reflect.</p>	All overwrite operations	<p>If the result of any parameter is to overwrite an existing backup file on a protected volume then this will only be allowed if the target folder is not a backup destination in any saved backup definition xml file.</p>
Parameter	Rule								
/MOVE /MOV	<p>If the source folder is on a protected volume then the /MOVE /MOV parameters will only delete backup files in the source folder if the destination folder is also on a protected volume.</p> <p>This ensures that existing files cannot be moved to an unprotected volume and compromised.</p>								
/MIR /PURGE	<p>If the target folder is on a protected volume then the the /MIR /PURGE parameters will only delete backup files in the target folder if both of the following conditions are true:</p> <ol style="list-style-type: none"> 1. The source folder is a backup destination in any saved backup definition xml file. 2. The target folder is not a backup destination in any saved backup definition xml file <p>This ensures that the synchronisation operation cannot inadvertently, or otherwise, delete files in a folder that is used as a backup destination in Macrium Reflect.</p>								
All overwrite operations	<p>If the result of any parameter is to overwrite an existing backup file on a protected volume then this will only be allowed if the target folder is not a backup destination in any saved backup definition xml file.</p>								
<p>Turn off Image Guardian</p>	<p>Turns off the Image Guardian service. Optionally select from the list of further options:</p> <table border="1" data-bbox="347 1150 1484 1423"> <tbody> <tr> <td>1 Minute to 2 Hours</td> <td>Select to temporarily disable MIG for the selected time</td> </tr> <tr> <td>Restart service on reboot</td> <td>MIG will remain 'Off' until the next Windows reboot.</td> </tr> <tr> <td>Permanently Off</td> <td>When 'Turn off Image Guardian' is selected, 'Permanently Off' is the defaulted option if MIG is currently enabled and nothing is selected in the 'More Options...' list. Otherwise, selecting this option will cancel any temporary disable settings and turn off MIG.</td> </tr> </tbody> </table>	1 Minute to 2 Hours	Select to temporarily disable MIG for the selected time	Restart service on reboot	MIG will remain 'Off' until the next Windows reboot.	Permanently Off	When 'Turn off Image Guardian' is selected, 'Permanently Off' is the defaulted option if MIG is currently enabled and nothing is selected in the 'More Options...' list. Otherwise, selecting this option will cancel any temporary disable settings and turn off MIG.		
1 Minute to 2 Hours	Select to temporarily disable MIG for the selected time								
Restart service on reboot	MIG will remain 'Off' until the next Windows reboot.								
Permanently Off	When 'Turn off Image Guardian' is selected, 'Permanently Off' is the defaulted option if MIG is currently enabled and nothing is selected in the 'More Options...' list. Otherwise, selecting this option will cancel any temporary disable settings and turn off MIG.								


Note: Clicking 'Apply' will immediately change MIG and update the status text:

The **status area** above the buttons shows the current status of MIG.

 Current Status: Enabled

 Current Status: Disabled

 Current Status: Disabled Until Reboot

 Current Status: Temporarily Disabled

MIG is disabled for: 04:28

Re-Enable

Clicking **'Re-Enable'** will immediately cancel the outstanding temporary disable and **turn MIG 'On'**.