

Logon failure unknown user name or bad password

Network Authentication Error

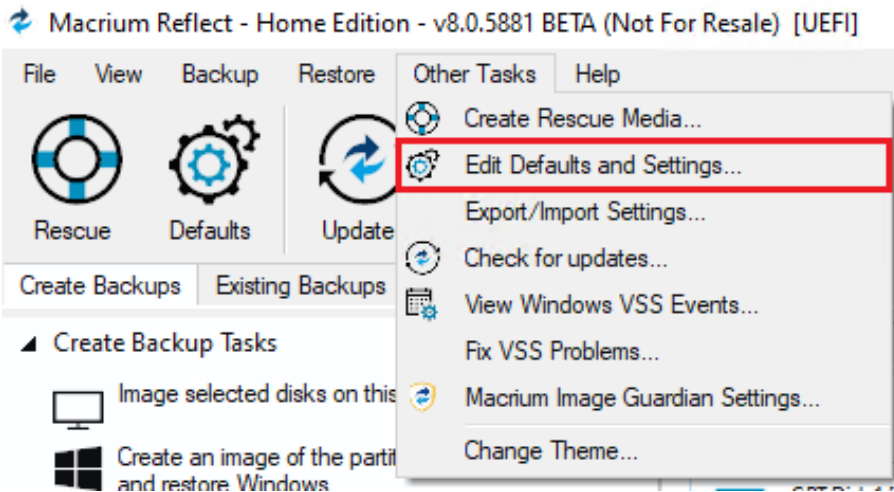
If you see this text in the backup log and your backup destination is a password protected network share then you may need to and the network authentication details in the Macrium Reflect defaults:

```
Validating location:      \\Server\share\ - Invalid (Logon failure: unknown user name or bad password.)
```

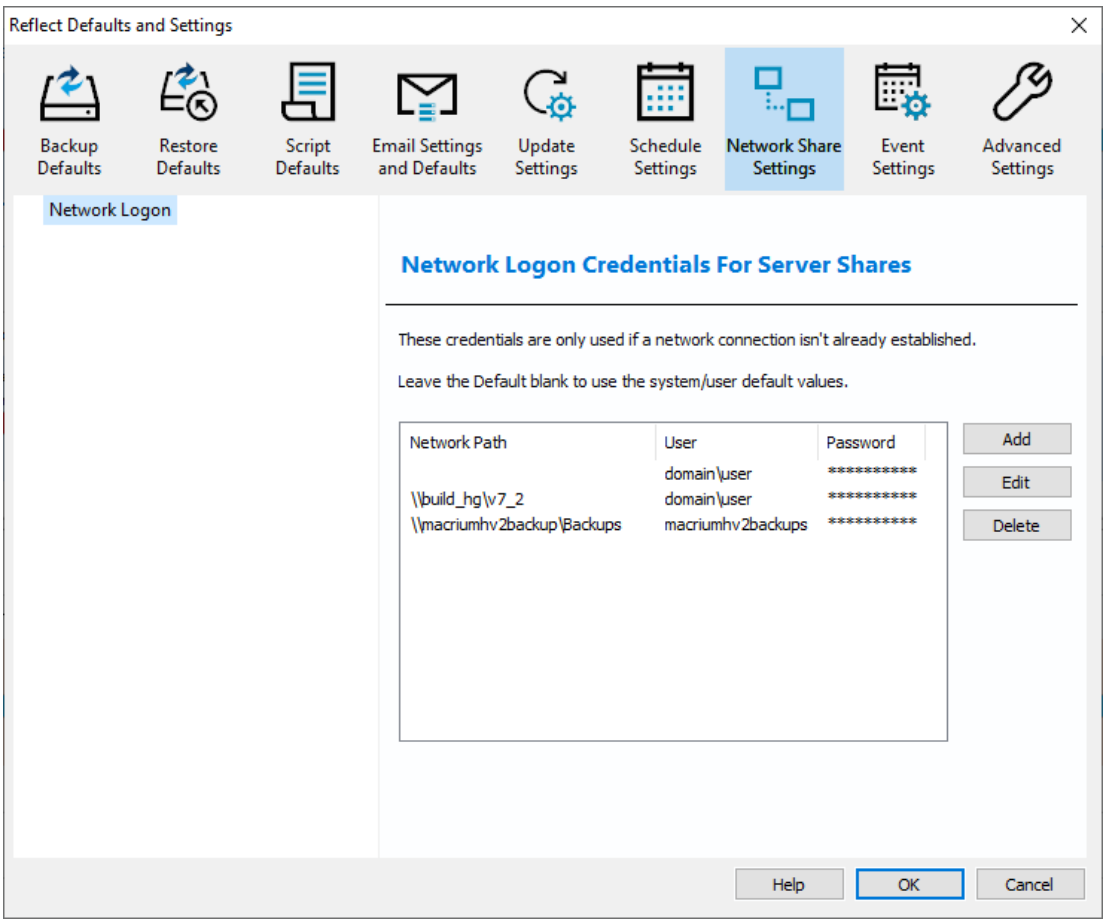
Note: Interactive backups may run without a problem, and you may only see this error for scheduled tasks.

Solution

Select the **Other Tasks** menu, then select **Edit Defaults and Settings** menu option and click the **Network Share Settings** tab:

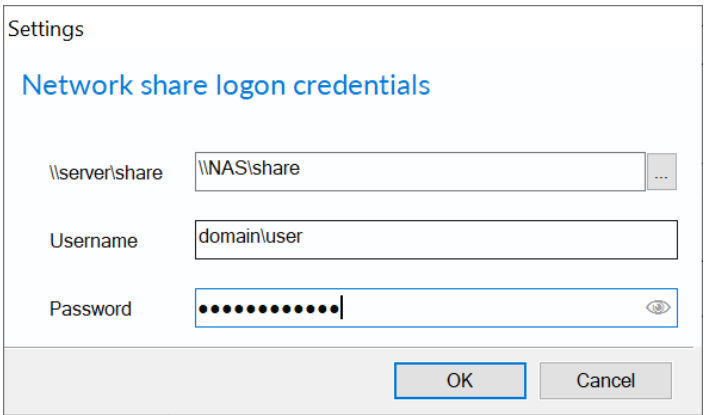


Windows contains a [Network Credentials cache](#) that enables network authentication details (User name and password) to be saved and re-used to logon automatically. However, scheduled tasks are run in Windows 'batch mode' and do not have access to saved credentials. Because of this, you must enter network login details in the Macrium Reflect defaults to enable scheduled tasks to access and write to password-protected network shares.



Option	Description
Add	Add network logon details for a new network location
Edit	Edit an existing location. Note: The ' Default ' location logon details will be used for all shares that aren't explicitly added.
Delete	Remove logon credentials

Add / Edit



Option	Description
--------	-------------

\\Server\share	Enter the UNC path to the root of the network share. Do not enter any sub-folders in the path
Username	Enter the authenticated user that has access to the share
Password	Enter the user's password.

You can also select **Default** and click **Edit** to provide default credentials to be used for all network shares:

Settings

Network share logon credentials

\\server\share

Username

Password