

Restoring Exchange databases

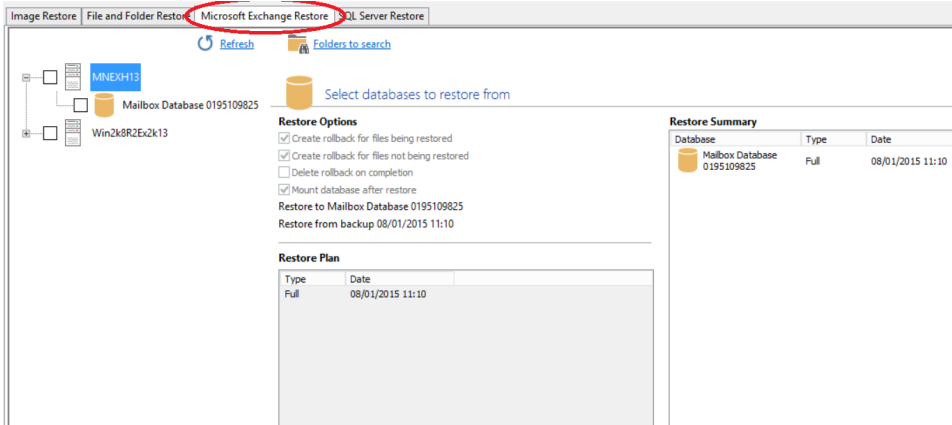
Macrium Reflect Server Plus can restore select databases back to your Microsoft Exchange Server providing the following restore scenarios:

- Restoring MS Exchange databases to time of backup
- Restoring MS Exchange databases to point in time
- Restoring MS Exchange databases to a different name or location

Restoring MS Exchange databases to time of backup

1. Select **Microsoft Exchange Restore**.

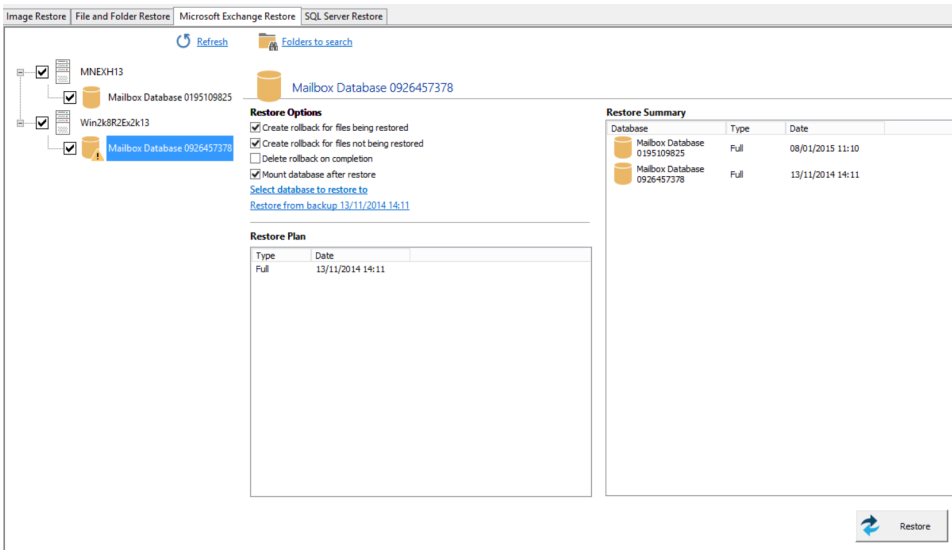
Available databases display. If no databases are showing, click **Folders to search** to search for Microsoft Exchange backup files.



2. Select each database to restore. By default the most recent backup is selected.

Restore Plan shows the backup files selected.

Restore Summary lists all databases restoring and the date/time of the backup file to restore from.



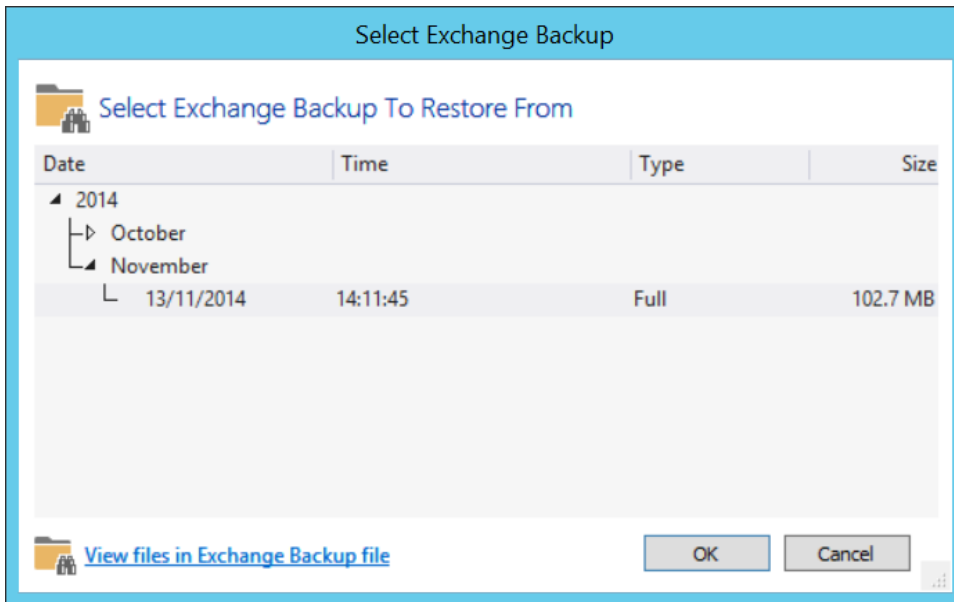
3. Click **Restore** to restore selected databases back to their original volume locations and database names.

4. Review the information and click **Restore**.

Restoring MS Exchange databases to point in time

When you restore to a different point in time, only the log files up to that point in time are restored which are then replayed into the restored database. you restore to a different point in time Macrium Reflect replays the log files up until the selected point.

1. Select the databases to restore.
2. For each database restoring, select **Restore from backup**.



3. Select a file in the list.
4. Click **OK**.
5. Optionally, click **View files in Exchange Backup file** to show files contained in the backup.
6. Click **OK** to keep the current selection.

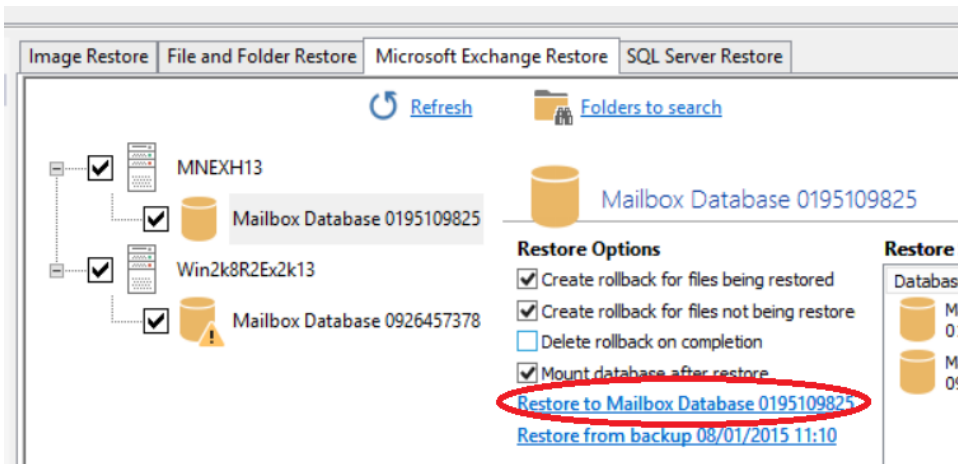
Note: When restoring databases to point in time for the same storage group (under Microsoft Exchange 2003/2007) Macrium Reflect forces you to use the same backup file in a single restore operation to maintain log file consistency during the mount process. If you need to restore databases in the same storage group to different points in time, do so in separate restore operations.

7. Review the information and click **Restore**.

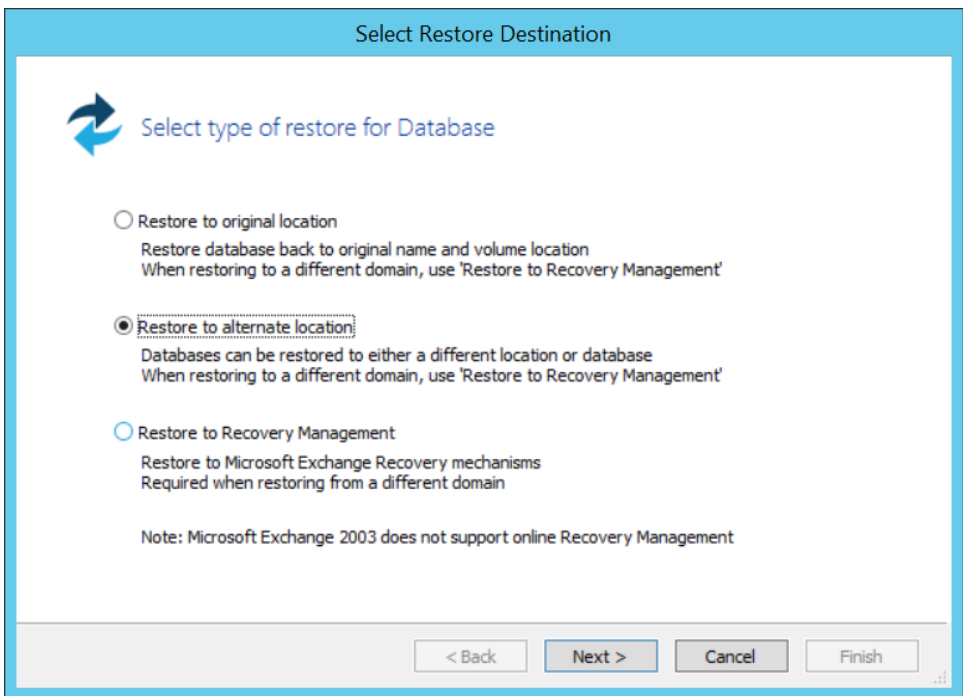
Restoring MS Exchange databases to a different name or location

Macrium Reflect Server Plus allows you to restore databases to different names and locations with support for storage group and database creation.

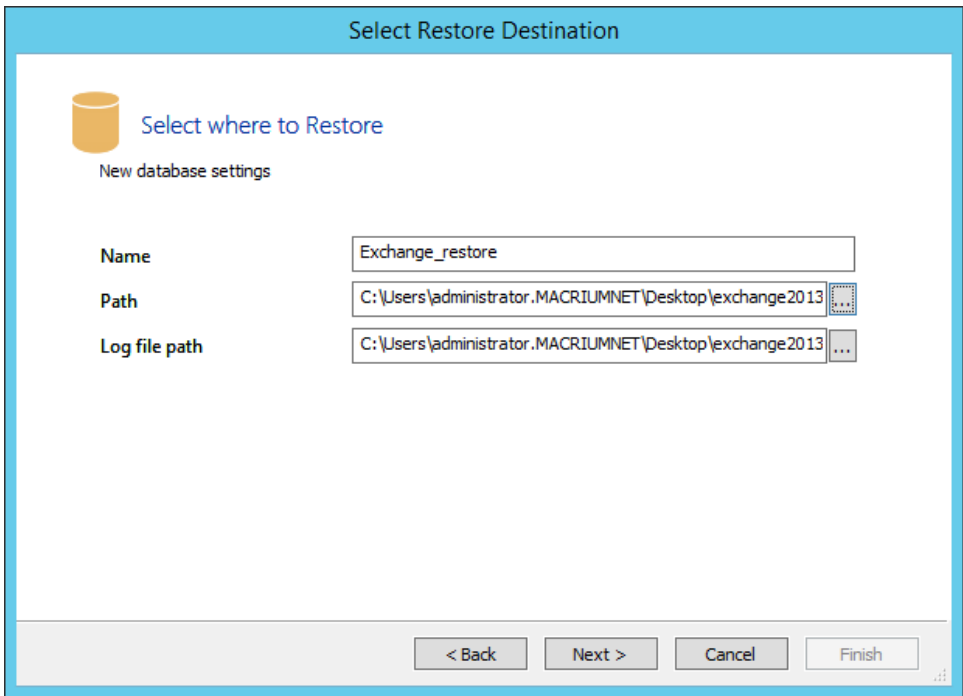
1. Select the databases to restore.
2. Click **Restore to** (in this example) **Mailbox Database**.



Select Restore Destination wizard begins:



3. Select **Restore to alternate location**.
4. Click **Next**.
5. Specify the database to restore to:



Name:	Specify the name for the database
Path:	Specify the folder where you want the database restored.
Log file path:	Specify the folder where transaction log files are stored.

6. Click **Next**.
7. Review the information and click **Finish**.

