

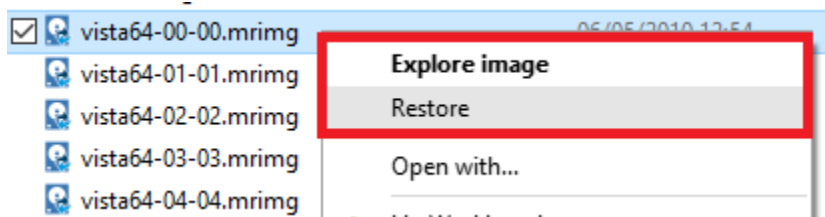
# Windows Explorer shell integration

Macrium Reflect is integrated with Windows Explorer giving you the following features:

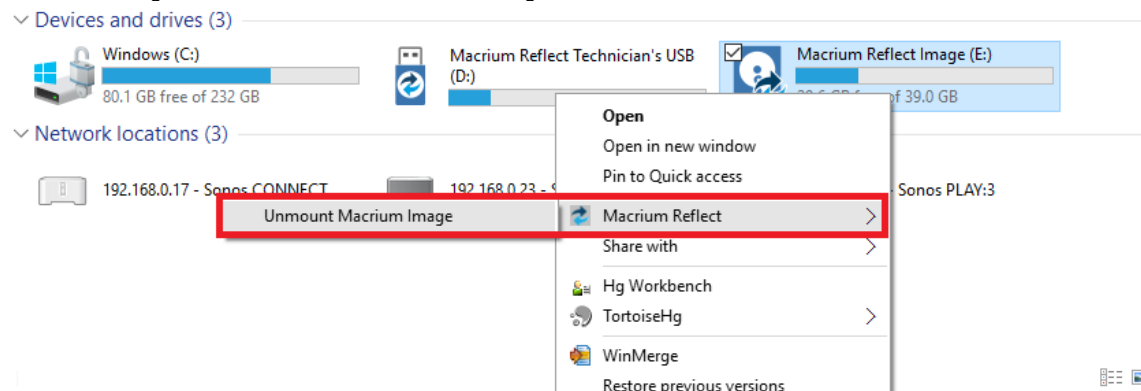
- Context sensitive menus
  - Windows Explorer columns
  - .mring and .mrbak file properties
  - File Infotips
  - Extended support for Reflect XML definition files
- 

## Context sensitive menus

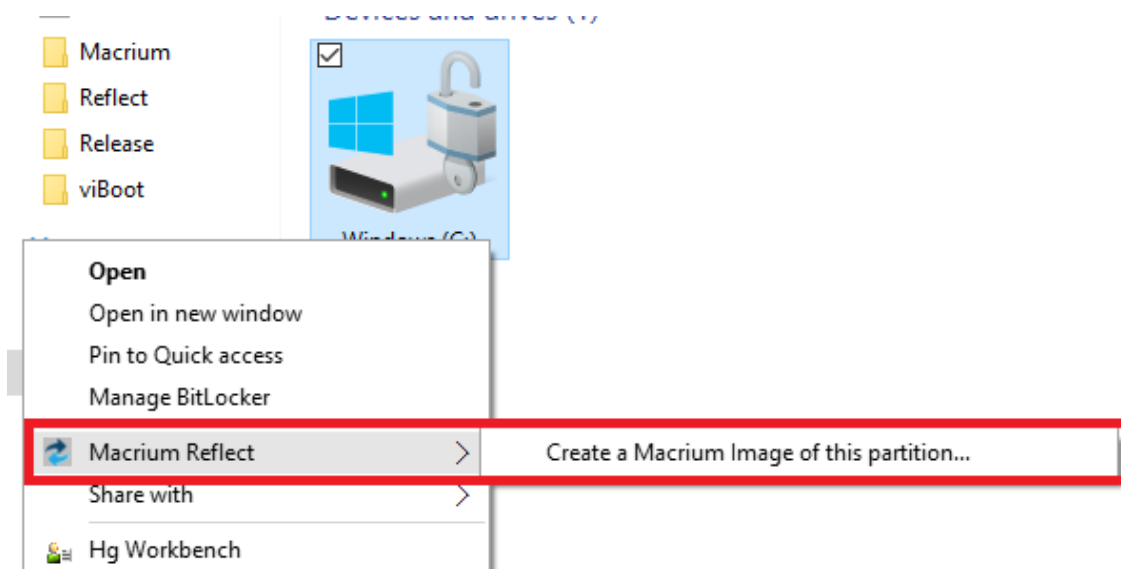
Right-click on Reflect .mring and .mrbak files to **Explore** or **Restore** an image.



You can then right click on the disk to unmount the image



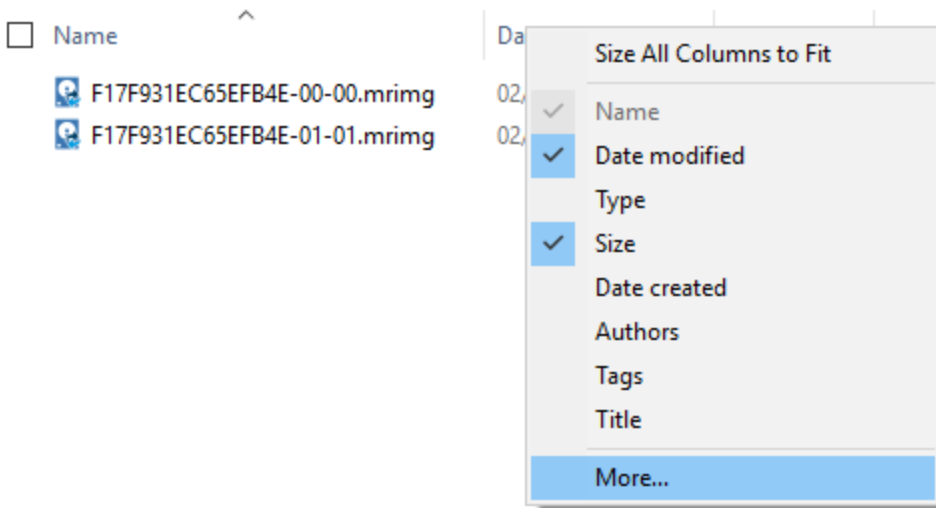
You can also image individual drives by **selecting the drive, right-clicking** and selecting the **Macrium Reflect** option then **Create a Macrium Image of this partition**



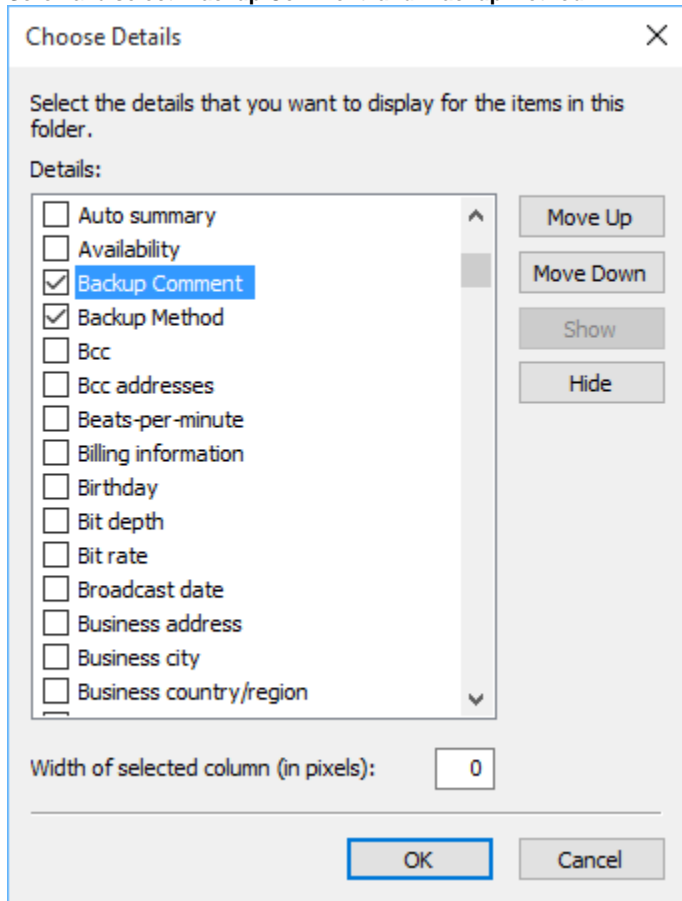
## Windows Explorer columns

You can add columns in Windows Explorer to show the Backup Method and the comments stored with the backups.

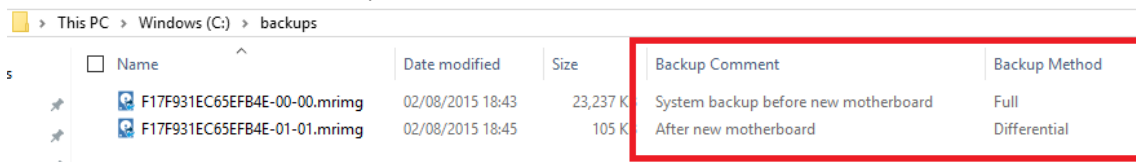
**Open a folder** containing Macrium Reflect backup files, **right click** on any Explorer column heading and **select 'More'**:



Scroll and select 'Backup Comment' and 'Backup Method':

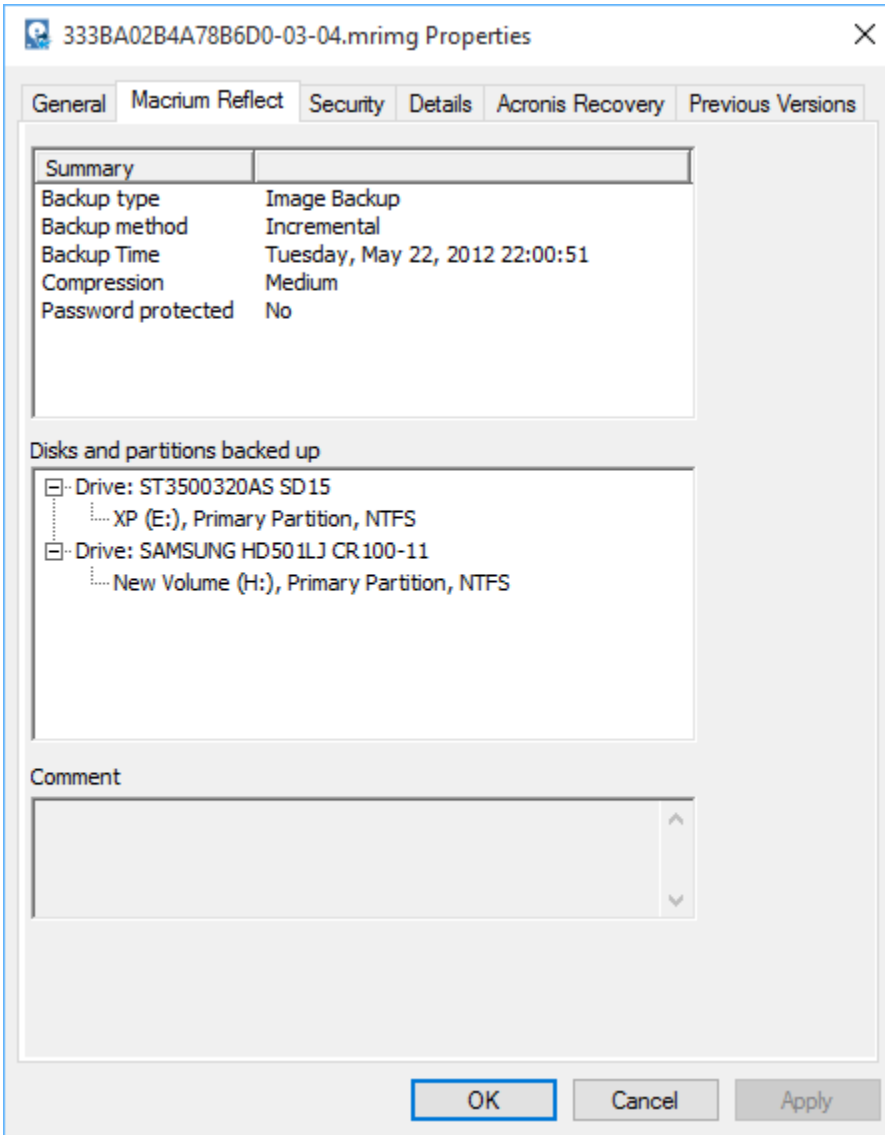


The columns are then added to the Explorer view:



## .mring and .mrbak file properties

**Right-click** and select **Properties** to view the Macrium Reflect properties pane on image and backup files. This gives information about the file such as the backup method and time of backup as well as volumes or folders that have been backed up.



## File Infotips

**Hover** the mouse over a Macrium image or backup file, you can get a brief summary of the file including the file type (Image or Backup), backup method, compression level and if the file is password protected.

333BA02B4A78B6D0-00-00.mrimg	8:22	Disk Partition image	167,590,73...
333BA02B4A78B6D0-00-00.mrimg	2:20	Disk Partition image	254,948 KB
333BA02B4A78B6D0-00-00.mrimg	2:18	Disk Partition image	205,726 KB
333BA02B4A78B6D0-00-00.mrimg	2:18	Disk Partition image	1,082,438 KB
333BA02B4A78B6D0-04-05.mrimg	24/05/2012 09:08	Disk Partition image	809,844 KB
333BA02B4A78B6D0-05-06.mrimg	25/05/2012 08:10	Disk Partition image	203,253 KB
333BA02B4A78B6D01-06-07.mrimg	27/05/2012 22:19	Disk Partition image	1,006,385 KB

## Extended support for Reflect XML definition files

You can run full, differential and incremental backups by **right-clicking on XML definition files**. Select the Macrium Reflect option and then the backup type you wish to perform.

