

Accessing network shares in Windows PE

The Macrium Reflect Windows PE rescue media includes the Windows networking stack and allows connection to authenticated network shares when booted into Windows PE. Network shares can be entered by UNC path using the \\Server\Share or by IP address and shared folder.

If you have problems accessing shared servers then please see [Resolving network issues in Windows PE](#)

Please note: Wireless Networking is not supported in Windows PE. Please connect to your network using an Ethernet cable.

Please Note: When accessing network shares in **Windows PE 10** it's necessary to prepend the user name with '!\' if the network resource is on the local network/domain.

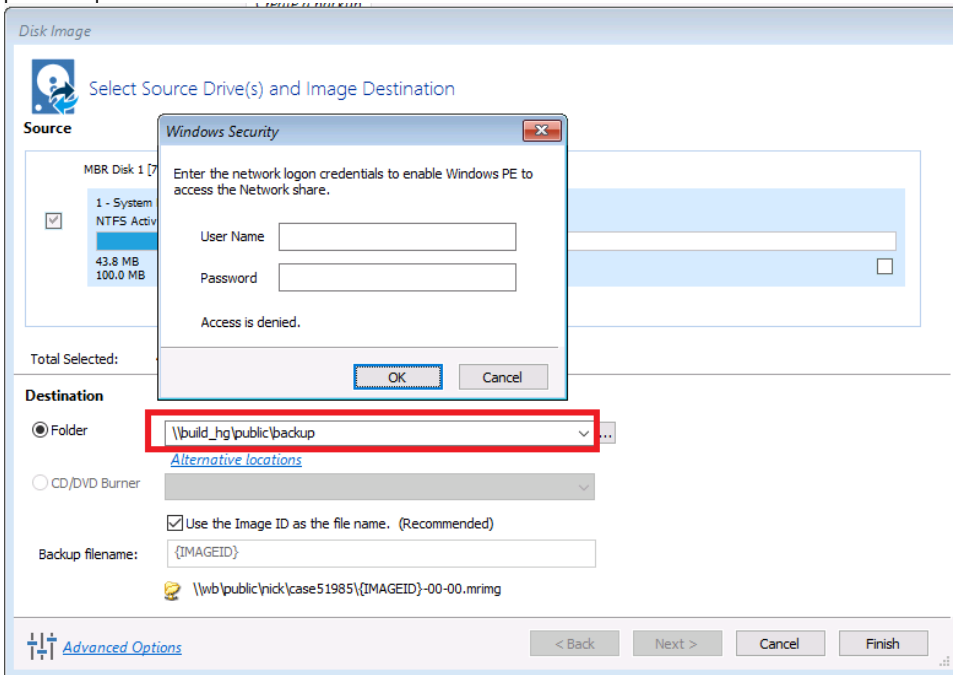
For example enter '!Administrator'

This is not required for earlier versions of Windows PE.

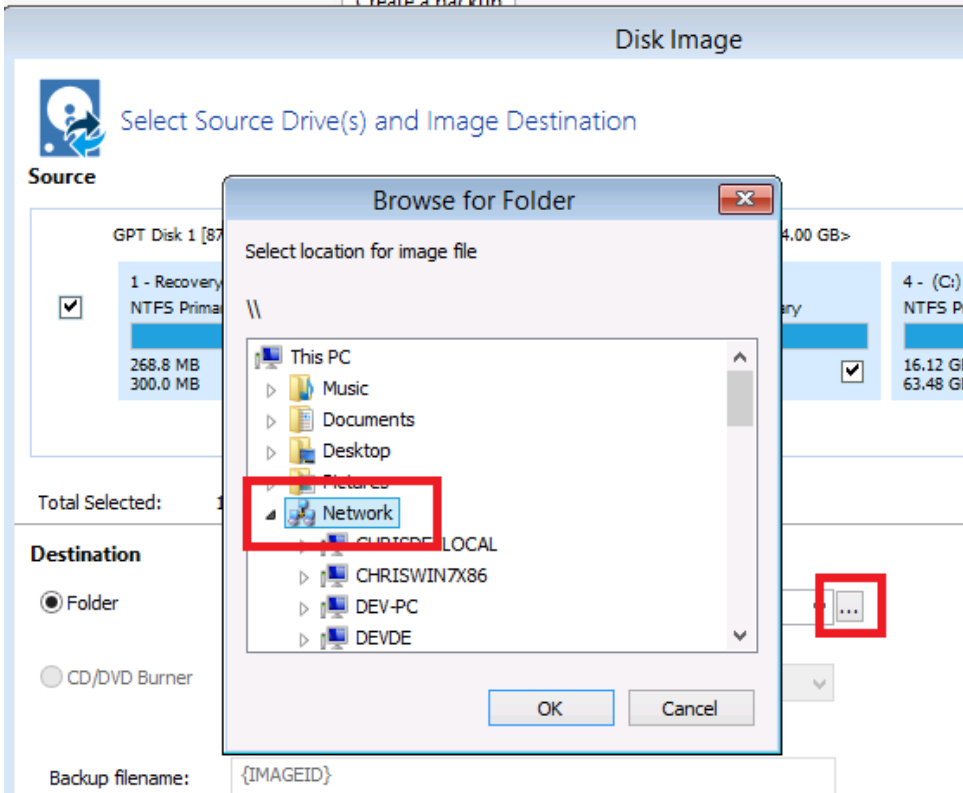
- [Accessing the network when creating an image in PE](#)
- [Accessing the network when restoring an image in PE](#)

Accessing the network when creating an image in PE

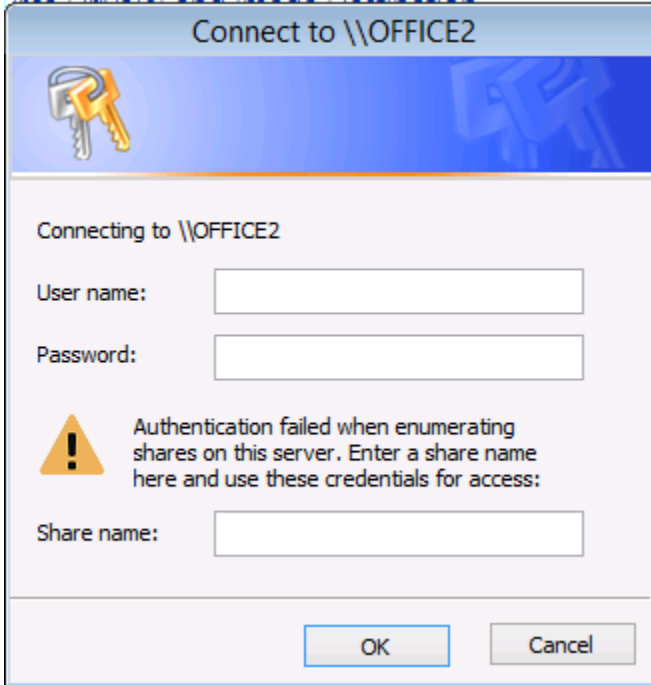
1. In the image wizard **enter the \\server\share\folder path** in the backup destination page. You will be prompted for login credentials if the share is password protected:



- Alternatively, **click the '...' browse button** to browse the network for the shared folder:



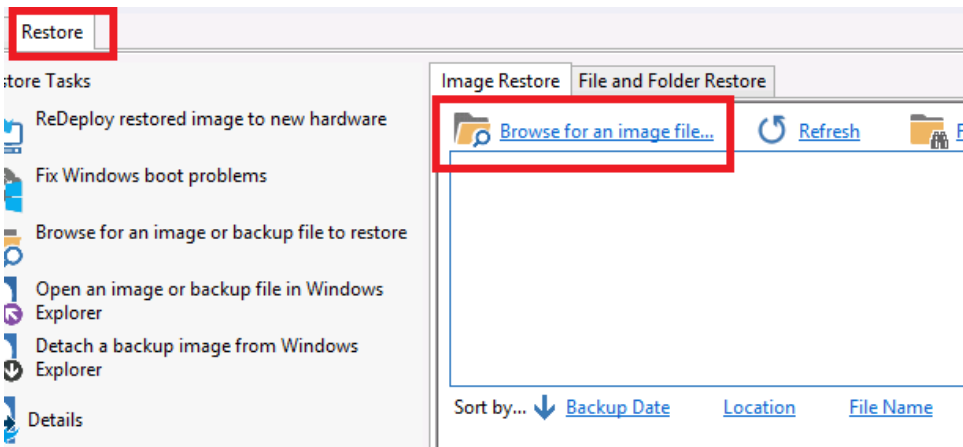
Expanding a network node that requires authentication will display the Network Credentials dialog:



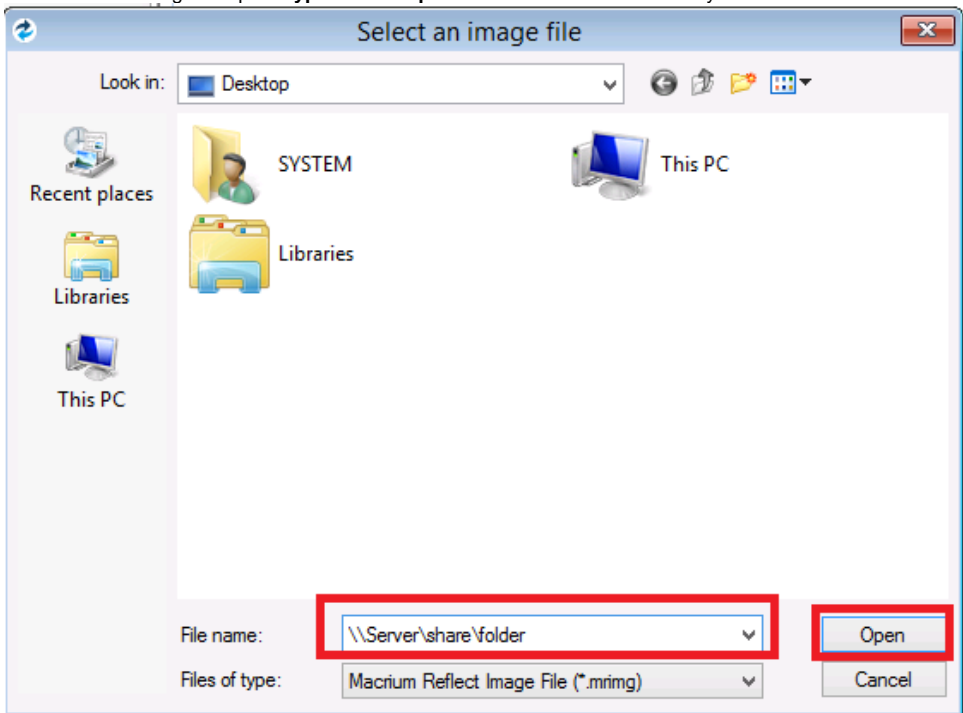
Leave the 'Share Name' field empty for root level authentication of the server.

Accessing the network when restoring an image in PE

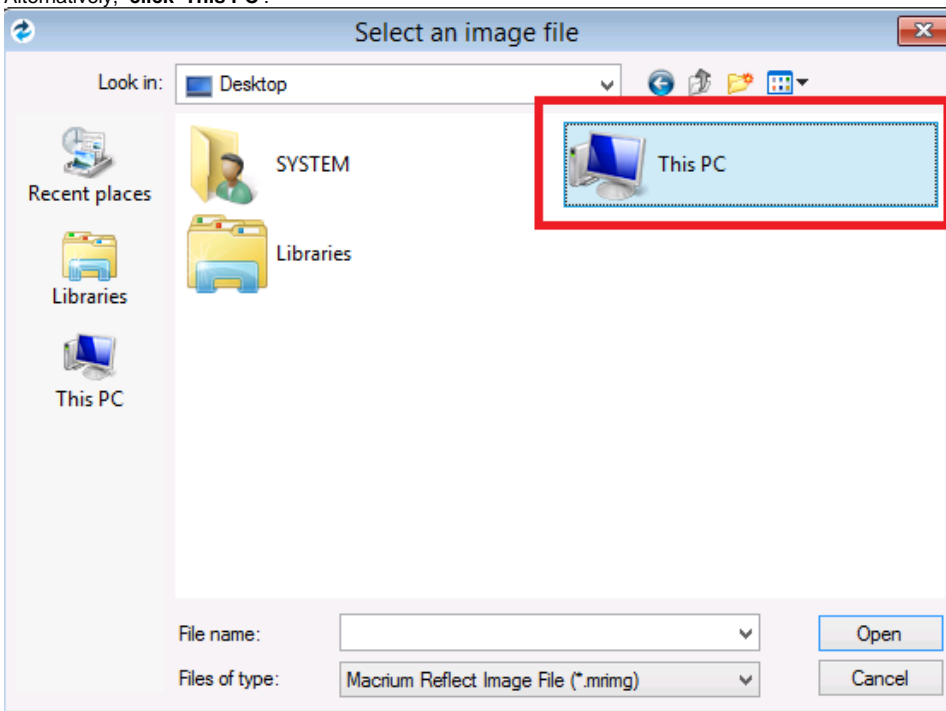
- If the image that you are restoring isn't visible in the Macrium Reflect Restore pane then **click the 'Browse for an image file..' link**



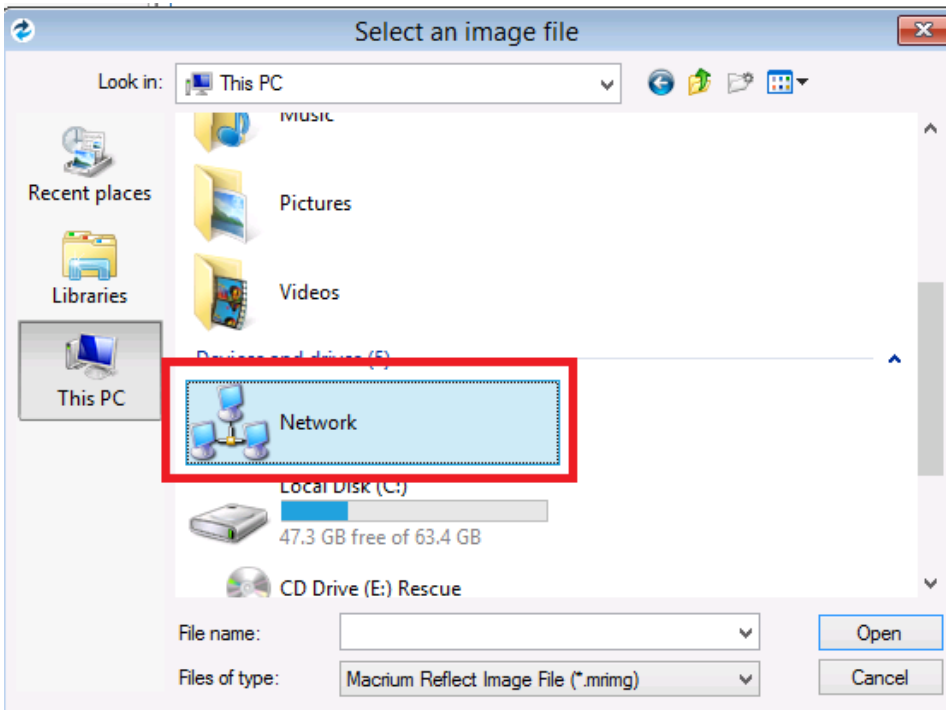
2. In the browse dialog that opens **type the UNC path of the network share** that you want to access:



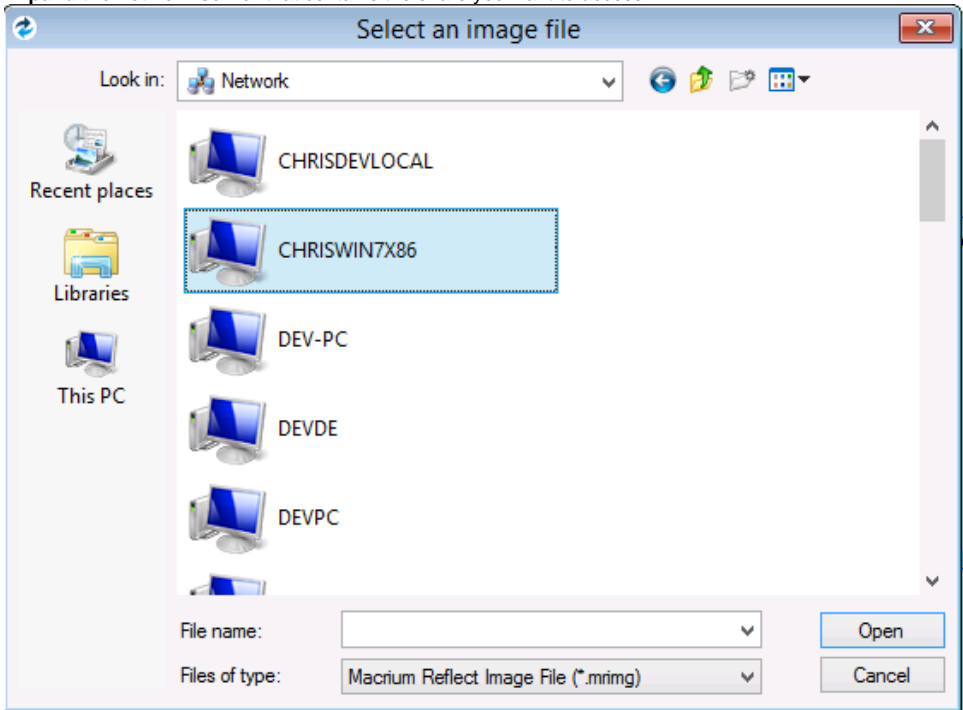
3. Alternatively, **click 'This PC'**:



4. Scroll down and **double click 'Network'**:



5. **Expand the network server** that contains the share you want to access:



Expanding a network node that requires authentication will display the Network Credentials dialog:



Leave the 'Share Name' field empty for root level authentication of the server.

See also: [Resolving network issues in Windows PE](#)