

Fixing Windows boot problems

This article explains how to use the 'Fix Boot Problems' option to resolve common boot problems when restoring an image.

- [Fix boot problems on MBR/BIOS systems](#)
- [Fix Boot problems for GPT/UEFI Boot Systems](#)

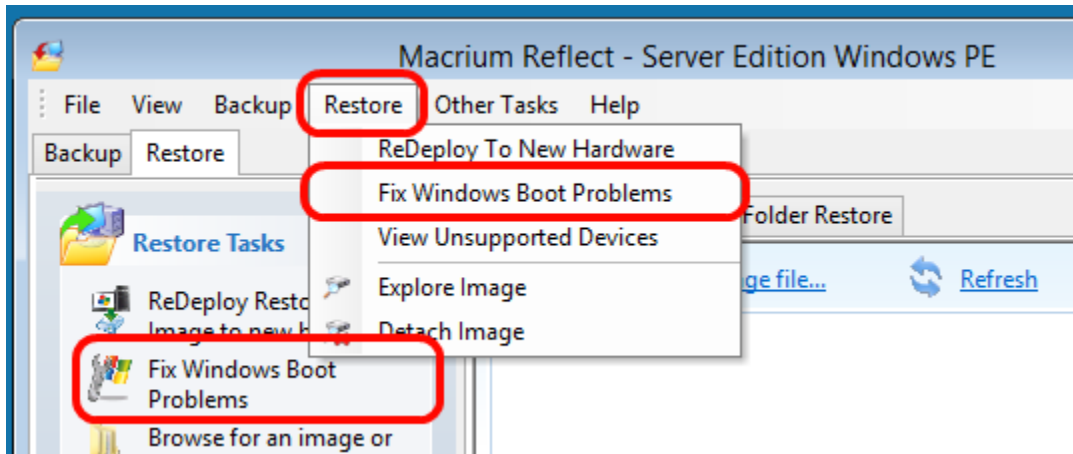
When restoring an image or cloning a HD there can be situations where Windows is unable to boot due to incorrect boot configuration. This article explains how Reflect enables you to resolve these situations.

Depending on whether the disk you have restored uses GPT or MBR partitioning schemes, the action you need to take may vary. This article covers both cases.

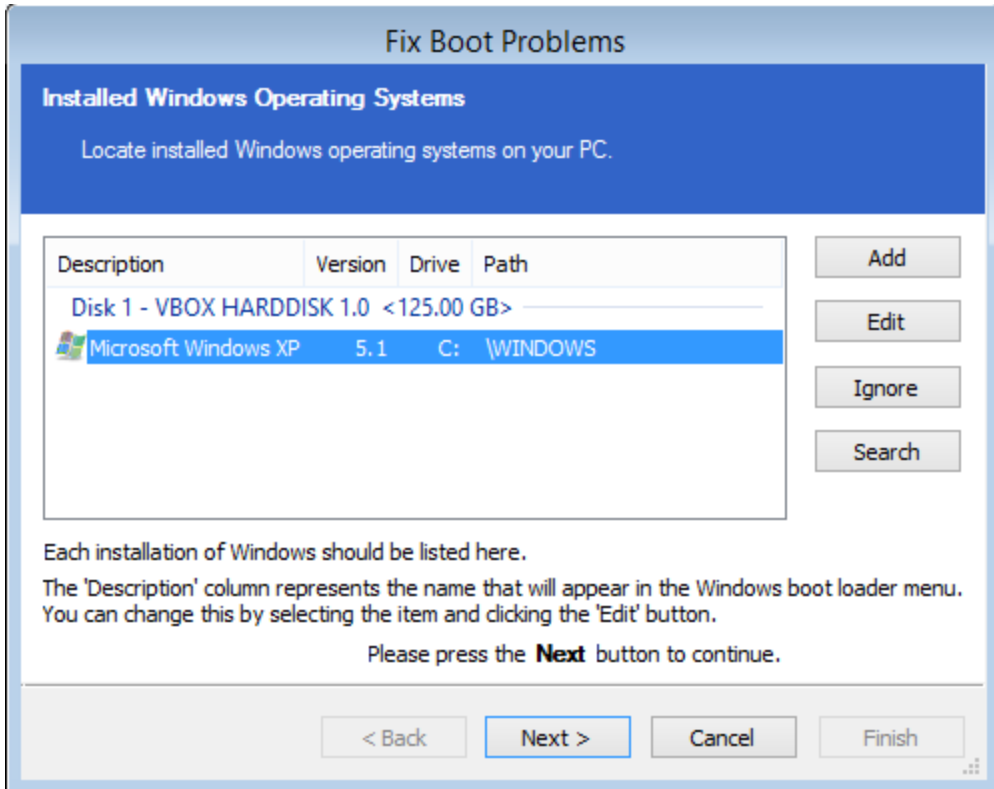
Fix boot problems on MBR/BIOS systems

Fix Windows boot problems is available in the Windows PE Rescue media environment. To fix Windows boot problems, start your computer with your rescue media inserted. Then, after a restore or clone, to use fix boot problems:

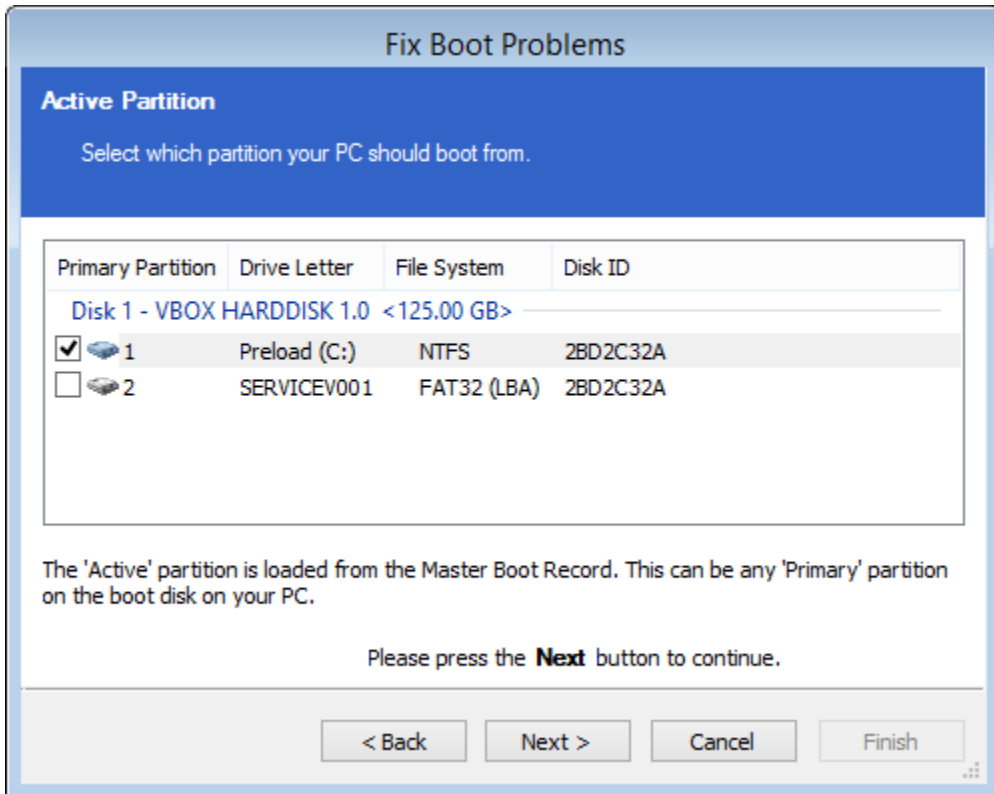
1. **Select** the restore menu, then **select** fix boot problems. Alternatively, **choose** the restore tab then under restore tasks **select** Fix Windows Boot Problems.



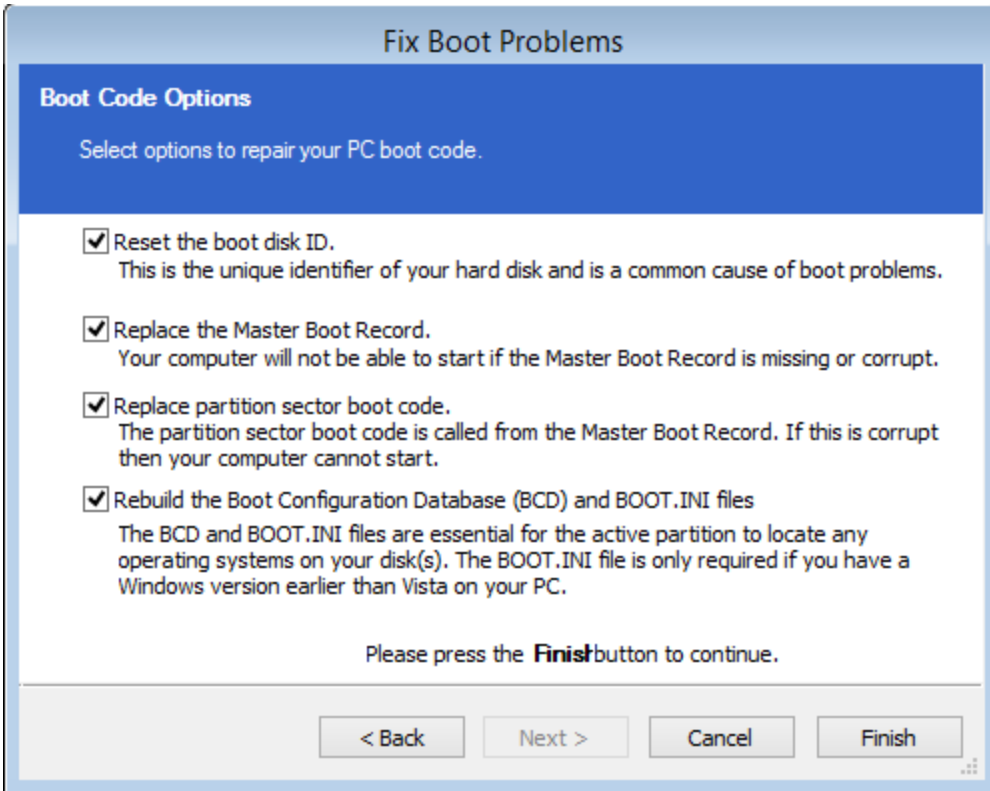
2. The Fix boot problems wizard will then open.
3. You will be presented with a list of Windows Installs, which the wizard detects. **Verify** these are correct. If the wizard has not automatically detected your Windows install, **add it** using the buttons on the right. You can also **correct any details** using the edit functionality.



4. **Select the active partition.** The wizard automatically selects the boot disk for the relevant Windows install, but you can change this if you are using an alternative setup:



5. **Choose** the boot options to be fixed. We recommend leaving all options checked, however, power users may wish to alter the behaviour of the wizard.



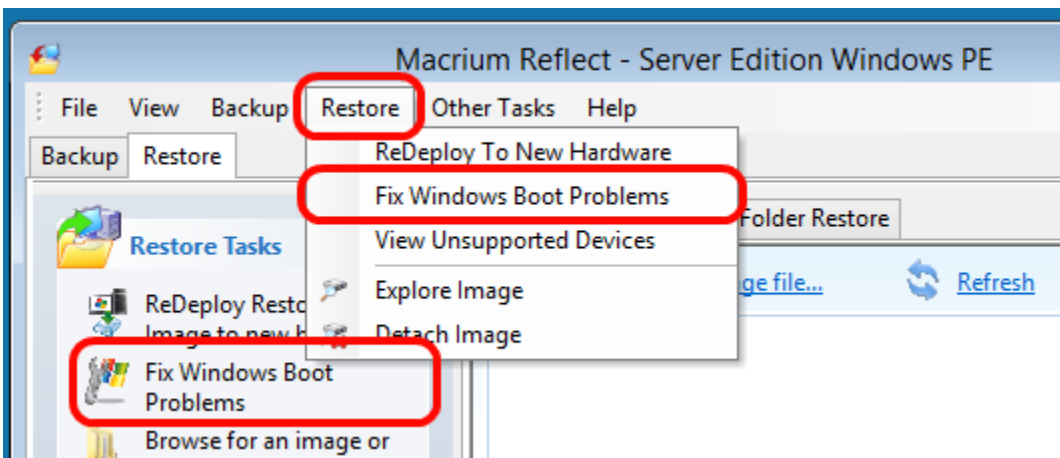
6. **Click finish.** The wizard will then offer you the choice to reboot. If you need to perform additional tasks in the PE environment such as ReDeploy, **select no.** Otherwise, **select yes.**

7. Your system will now boot.

Fix Boot problems for GPT/UEFI Boot Systems

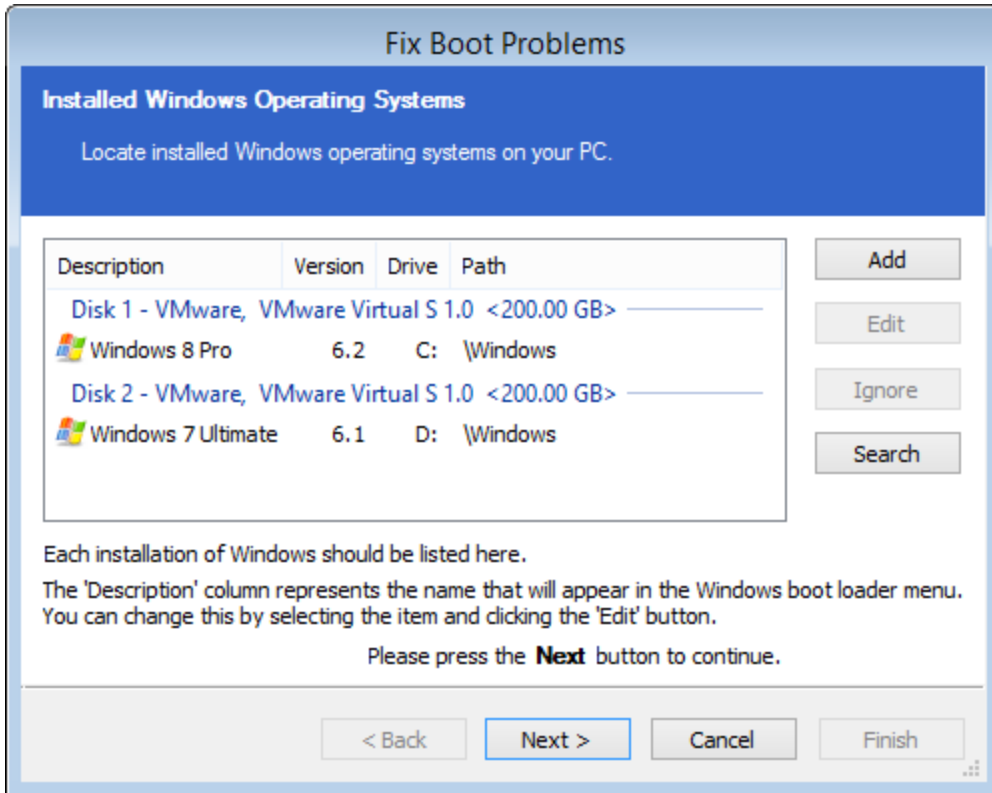
Fix boot problems is available in the same location as for MBR systems. Boot your UEFI capable rescue media. Then:

1. **Select** the restore menu, then **select** fix boot problems. Alternatively, **choose** the restore tab then under restore tasks **select** Fix Windows Boot Problems.

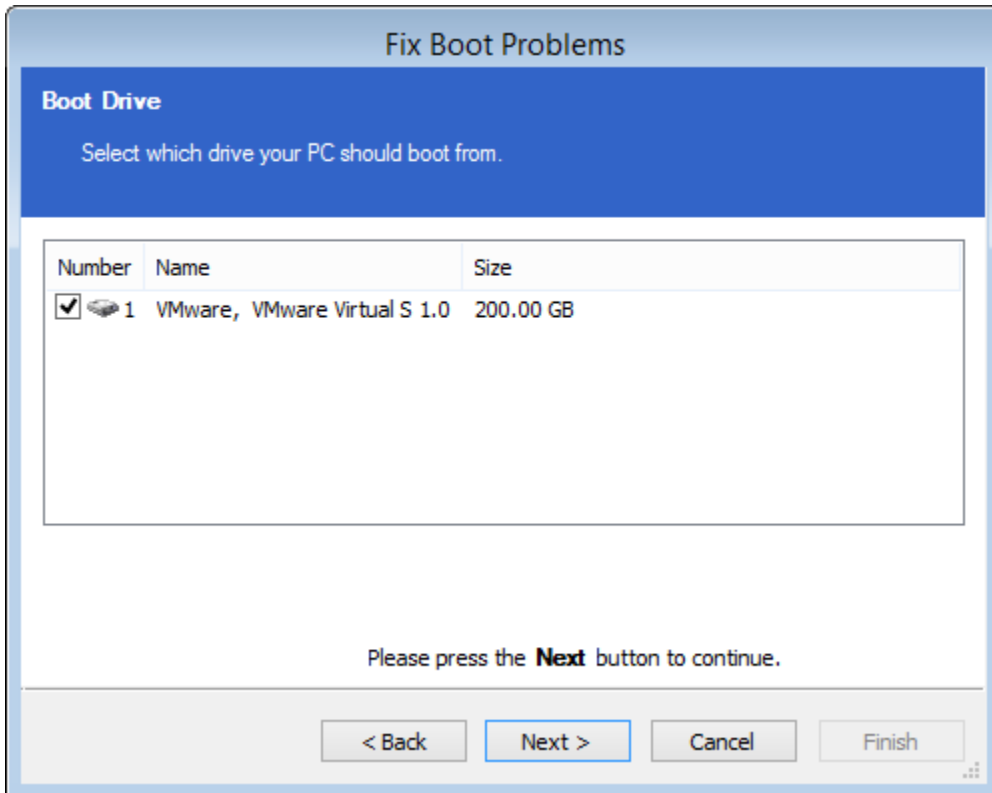


2. The Fix boot problems wizard will then open.

3. You will be presented with a list of Windows Installs, which the wizard detects. **Verify** these are correct. If the wizard has not automatically detected your Windows install, **add it** using the buttons on the left. You can also **correct any details** using the edit functionality.



4. **(Optional Step)** if you have multiple disks, you may be asked to select which you should boot from. **Choose** the disk you wish to boot from, then **press next**.



5. The wizard will then display a summary screen. **Press Next**.

6. You will then see a report showing you a choice of actions and allowing you to restart your PC. **Select Yes** if you wish to restart now and **select No** if you wish to perform additional tasks in the PE environment.

