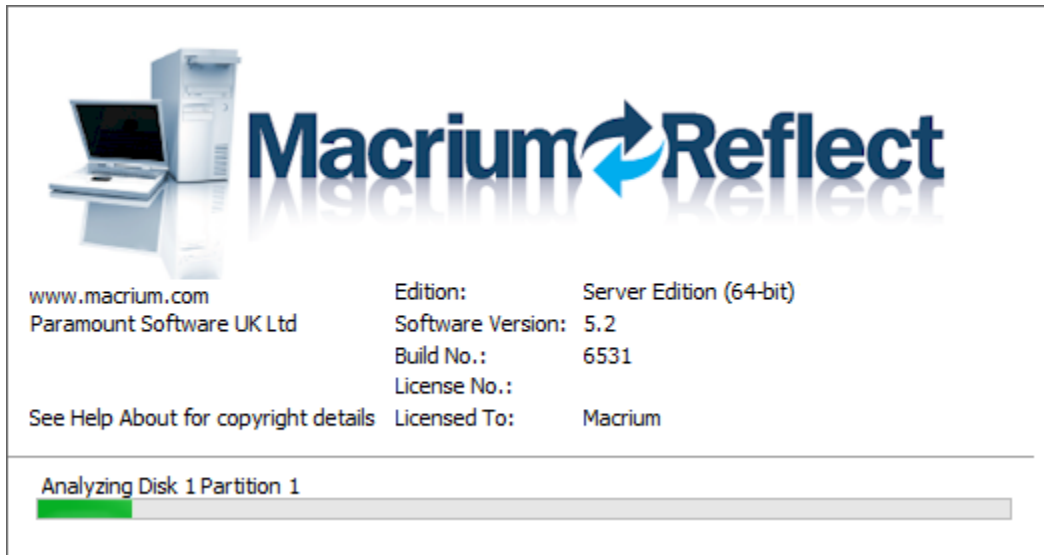


Troubleshooting Macrium Reflect startup problems

This article covers the possible causes and solutions if Macrium Reflect freezes during startup.

When Macrium Reflect starts the first task is to read all locally attached disks and load information about disks, partitions and file systems. This is a low level operation and requires Windows highest privileges.



If this process **freezes** and prevents Macrium Reflect from starting then there are two possible reasons:

Corruption is preventing File System meta data from being loaded.

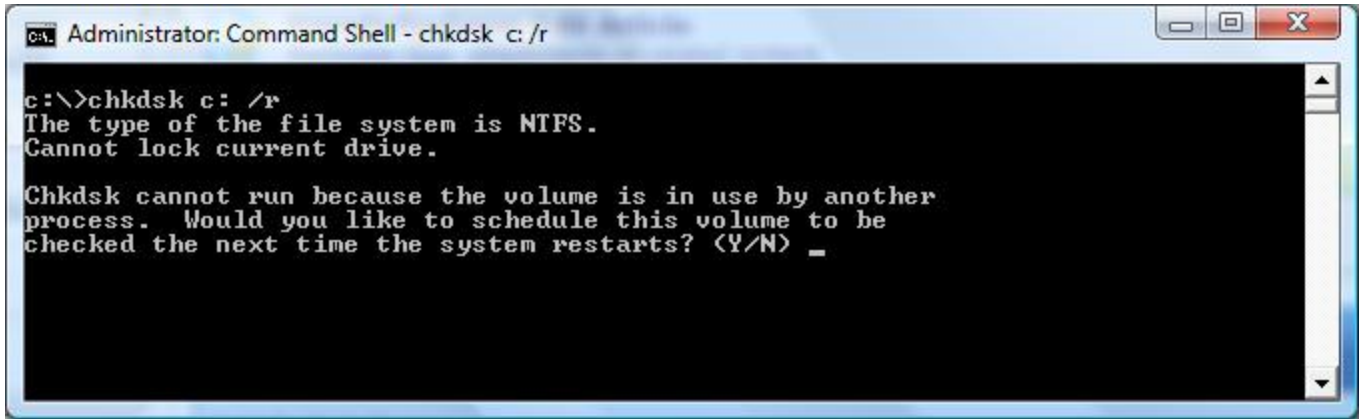
To establish if this is the case, boot into Windows Safe mode or into Windows PE to see whether Macrium Reflect can be started from either of these environments. If you receive the same problem then it's very likely that a local file system has a corruption problem.

To start Windows in Safe Mode please see the following Microsoft articles: [Windows XP](#), [Windows Vista](#), [Windows 7](#), [Windows 8](#).

To start your system using Windows PE, create your Macrium Reflect Windows PE rescue media and start your system using DVD, USB or Boot menu.

If Macrium Reflect freezes at startup in Safe Mode or from the Windows PE rescue media then **run 'chkdsk'** on your local drives to try and fix the File System corruption causing the problem:

1. **Start a command prompt with elevated privileges.** For more information on how to do this click [here](#).
2. Run '**chkdsk c: /r**' from a command prompt:



3. Enter 'Y' if you receive the 'schedule this volume..' message. and **reboot your PC**.
 4. **Repeat** for all other local drives on your system.
-

Another process is preventing Macrium Reflect from reading local disks

It's also possible that the direct access required to read local disk information is being blocked by your security software or in some cases this has been caused by disk monitoring software. To establish if this is the case and to help isolate the cause:

1. **Perform a Windows 'Clean Boot'** so that Windows is started with a minimal set of required drivers and startup programs. More information on how start Windows in 'Clean' mode can be found in [this Microsoft KB article](#).
 2. **Temporarily disable your Anti-Virus software** and/or **add Macrium Reflect to your Anti-Virus software 'white-list' or 'Trusted Zone'**. Please check your Anti-Virus software help for instructions on how to do this.
-