

Installing and updating Macrium Reflect offline

This article explains how to install Macrium Reflect on a PC that isn't connected to the Internet. For information on installing on an Internet connected PC please see [here](#).

- Download the installer and PE components.
- Offline installation of your purchased license.
- Ensuring your software is up to date.
- How to identify the architecture of your target machine.

Macrium Reflect uses an Internet connection to:

- Download the installer and Microsoft components to enable building of the PE based rescue environment
- Validation of your license during installation.
- Notification and download of updates

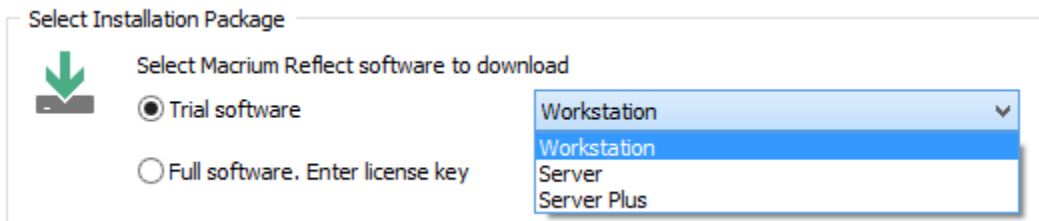
This article refers to the machine you wish to install Reflect on as the "target PC" and the machine connected to the Internet as the "online PC".

You will need access to a computer that is connected to the Internet and a device to copy files to the target PC.

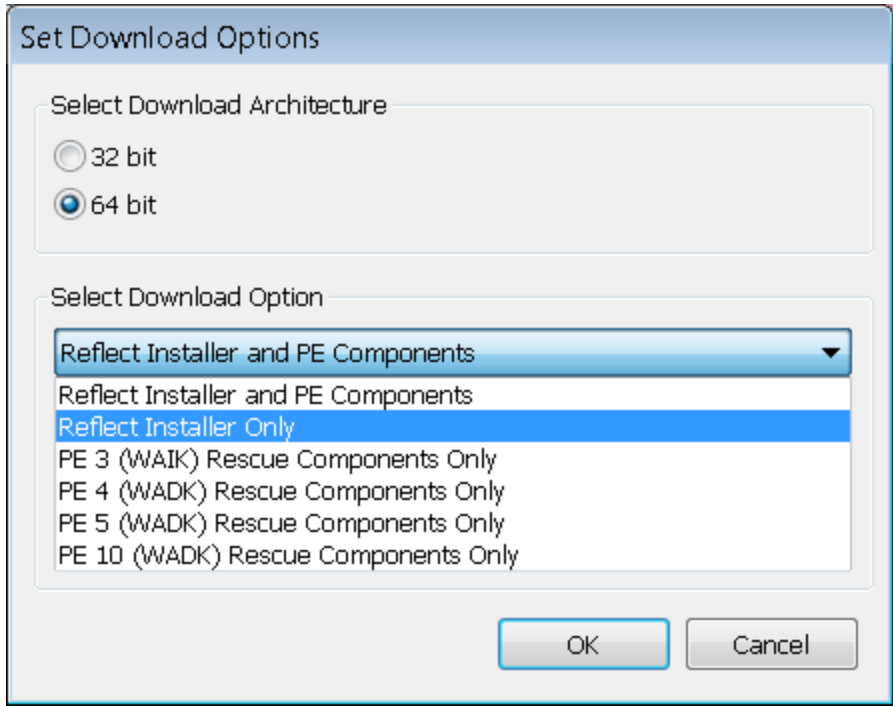
Download the installer and PE components.

Download the [Macrium Reflect Download Agent](#) to your PC and run it.

Select Trial and choose the edition or **select Full and enter your key**.



The download agent is automatically configured for the computer it is running on. You will need to reconfigure it to reflect your target PC instead. Do this by **clicking the Options button**.



Choose the download architecture - 32 or 64 bit - for your offline PC. See the "How to identify the architecture of your target machine" at the end of this article.

Option	Description						
Reflect Installer and PE Components	Downloads both the Macrium Reflect installer and the default Windows PE component files for currently running Windows OS: <table border="1" data-bbox="808 1094 1443 1289"> <thead> <tr> <th>PE</th> <th>Windows Version</th> </tr> </thead> <tbody> <tr> <td>PE 3.1</td> <td>Windows XP, Windows 7, Windows Vista, Server 2003, Server 2008, Server 2008R2</td> </tr> <tr> <td>PE 10</td> <td>All other Windows versions.</td> </tr> </tbody> </table>	PE	Windows Version	PE 3.1	Windows XP, Windows 7, Windows Vista, Server 2003, Server 2008, Server 2008R2	PE 10	All other Windows versions.
PE	Windows Version						
PE 3.1	Windows XP, Windows 7, Windows Vista, Server 2003, Server 2008, Server 2008R2						
PE 10	All other Windows versions.						
Reflect Installer Only	Downloads the Macrium Reflect installer for the chosen trial or entered license key. This option will be defaulted if you have already downloaded the default Windows PE component .zip file and it is located in the download folder.						
PE 3 (WAIK)	Downloads the Windows PE 3.1 components to file PE3x86.zip or PE3x64.zip						
PE 4 (WADK)	Downloads the Windows PE 4 components to file PE4x86.zip or PE4x64.zip						
PE 5 (WADK)	Downloads the Windows PE 5 components to file PE5x86.zip or PE5x64.zip						
PE 10 (WADK)	Downloads the Windows PE 10 components to file PE10x86.zip or PE10x64.zip						

For more information on the different versions of Windows PE see [this help page](#).

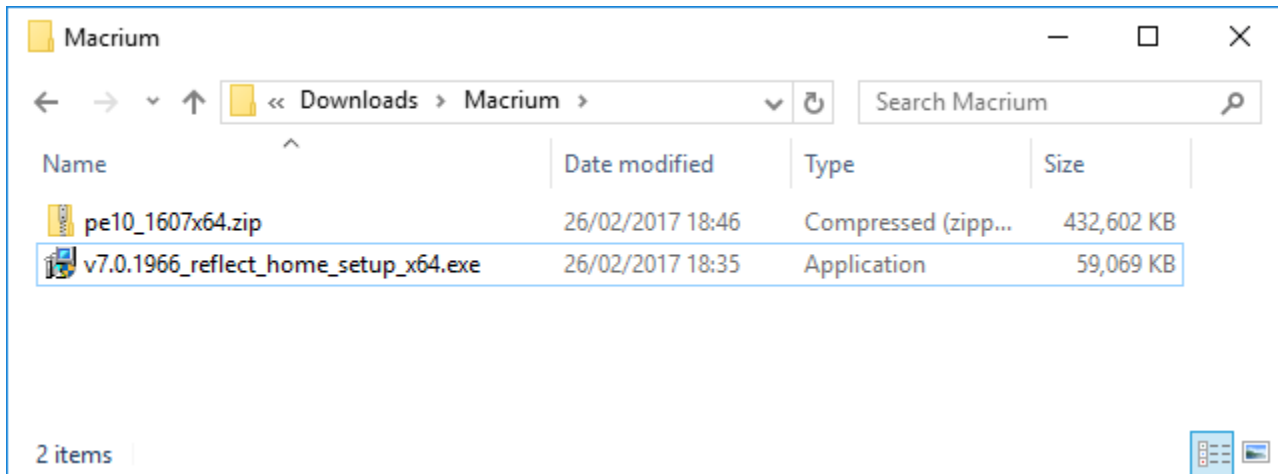
If you require the same PE version as the default Windows PE component files for this PC (see table above)

Select **'Reflect installer and PE components'**. This will download the required files in **one** download step. **Click OK**, then **un-check 'Run installer directly after downloading'**, and **Click download**.

If you require a specific PE version

This will require **two** downloads. First, **select 'Reflect Installer Only'**, **click OK**, then **un-check 'Run installer directly after downloading'**, and **Click download**. After the first download is complete, **click 'Options'** again, choose the desired **'PE X rescue components only'**, **click 'OK'** and then **Click 'Download'**.

Once the download(s) complete, you will find two new files in the folder saved to...



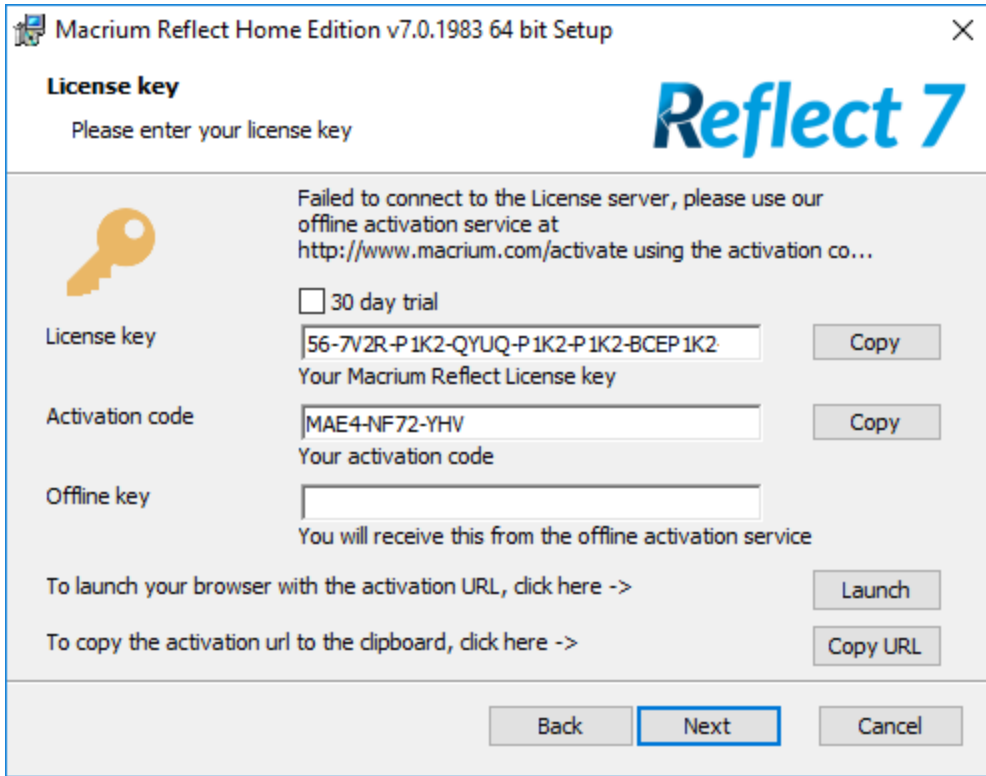
The file names will vary dependent on your particular selections. There will be an installer .exe file and a PE components zip file.

Copy these two files to your target PC and run the installer ensuring that the zip file is in the same folder. You will then be able to install your software and generate PE rescue CDs.

Offline installation of your purchased license.

Note: This step is not necessary for the Free or Trial Editions of Macrium Reflect.

When you run the installer on your target PC, instead of the automatic activation, you will be given an activation code. **F95B-K9XV-8SZ** in the example below.



Navigate to the registration server on your online PC and enter your license key and activation code.

Key Registration

Licence Key	<input type="text" value="56-P1K2-PVB4-QYUQ-P1K2-P1K2-BCEP1K2"/>
Activation Code	<input type="text" value="MAE4-NF72-YHV"/>

Submit

Click **'Submit'** and you will receive an offline key as shown below.

Registration Successful

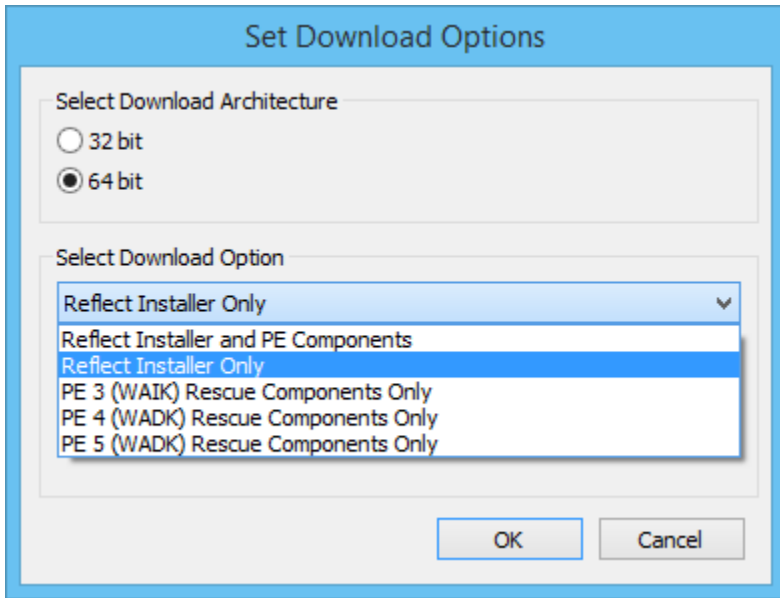
Licensee Macrium
Order Number 24002542
Offline key **QRZT-HKDY-662D-A284-DUAQ-HK2T-7H**

Enter the **Offline key** in the install dialog to complete installation.

Ensuring your software is up to date.

Note: For online installations, update notifications and patching is automatic.

Check the [change log](#) web page periodically for updates. If you see an update that is relevant to your system, follow the steps in 1. above, but **choose the 'Reflect Installer' option** in the download agent.



How to identify the architecture of your target machine.

Run msinfo32 (**type Windows Key + R** and then **type msinfo32**) and note the system type.

x86-based PC indicates that the target machine is 32 bit and x64-based PC indicates a 64bit system.

The screenshot shows the 'System Information' window with a menu bar (File, Edit, View, Help) and a tree view on the left containing 'System Summary', 'Hardware Resources', 'Components', and 'Software Environment'. The main area is a table with two columns: 'Item' and 'Value'. The 'System Type' row is highlighted in blue, and its value 'x64-based PC' is circled in red.

Item	Value
OS Name	Microsoft Windows Server 2012 Sta
Version	6.2.9200 Build 9200
Other OS Description	Not Available
OS Manufacturer	Microsoft Corporation
System Name	OFFICE2
System Manufacturer	ASUS
System Model	All Series
System Type	x64-based PC
System SKU	All