

# Creating a backup image of your computer, drive or partitions

Using Microsoft Volume Shadow Copy Service (**VSS**) Macrium Reflect creates 'point-in-time' persistent images of your system. In Addition to creating backups of all partitions required to backup and restore Windows, you can backup all or selected drives and partitions on the PC.

- Starting the Image Wizard
- Setting the Image destination
- Adding and Editing the Backup Plan
- Displaying the Image settings
- Saving the backup definition
- Best practises for saving Macrium Reflect backup definition files
- What's the problem?
- Create a Disk Image video

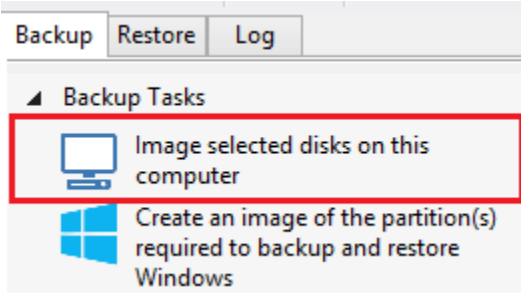
---

## Starting the Image Wizard

The Image Wizard can be started in multiple ways...

1. By selecting '**Image selected disks on this computer**'.

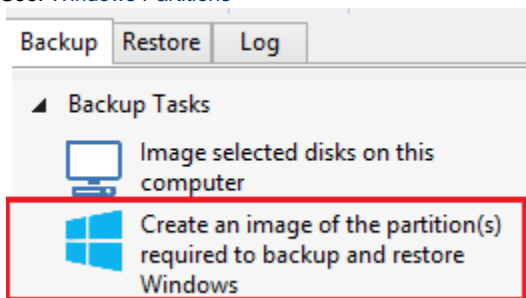
Using this option will populate the Image Wizard with all selected disks and partitions in the application main Window.



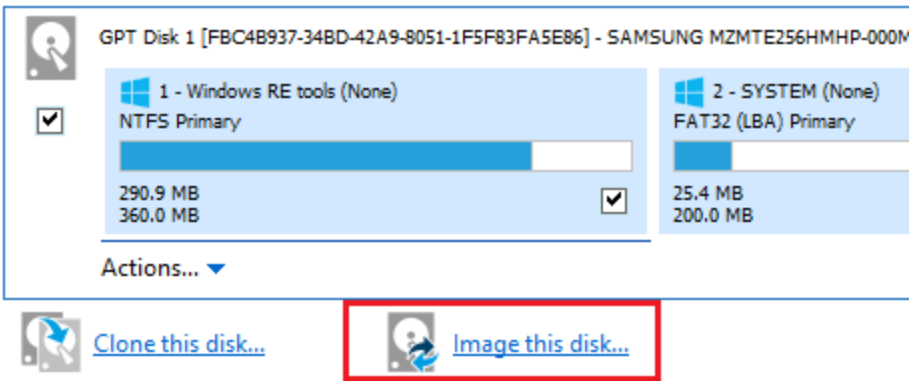
2. By selecting '**Create an image of the partition(s) required to backup and restore Windows**'.

Using this option will choose all the partitions required to boot Windows. This may include hidden system partitions that are essential for Windows to start and run.

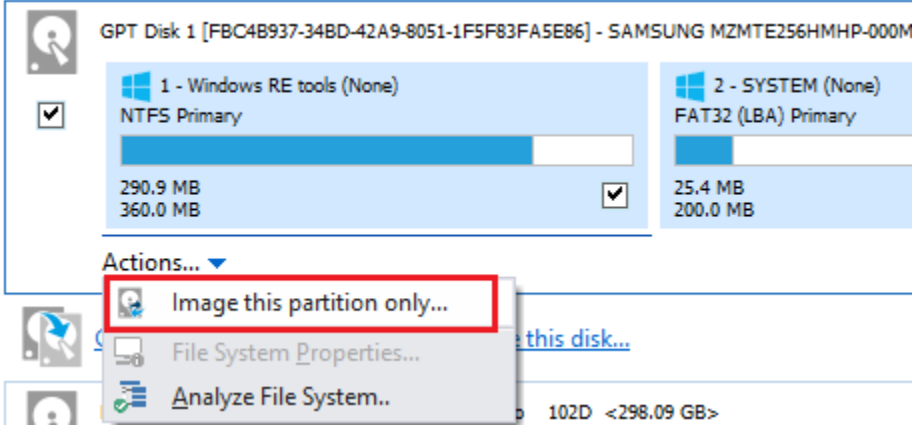
See: [Windows Partitions](#)



3. By Selecting a disk in the application main Window and click '**Image this disk...**'.




4. By Selecting a disk in the application main Window, click on a partition, then click 'Actions' and select 'Image this partition only...'



## Setting the Image destination

The first page of the Image Wizard shows the selected disks and partitions to be included in your Image and allows you to choose a destination.

## Disk Image



### Select Source Drive(s) and Image Destination

**Source**

GPT Disk 1 [FBC4B937-34BD-42A9-8051-1F5F83FA5E86] - SAMSUNG MZMTE256HMHP-000MV EXT41M0Q <238.47 GB>

<input checked="" type="checkbox"/>	<div style="border: 1px solid #0070C0; padding: 2px;"> <div style="display: flex; justify-content: space-between; align-items: center; font-size: x-small;"> <span>1 - Windows RE tool</span> <span>NTFS Primary</span> </div> <div style="margin-top: 2px;"> <div style="width: 100%; height: 10px; background: linear-gradient(to right, #0070C0 290.9MB, #0070C0 360.0MB);"></div> <div style="display: flex; justify-content: space-between; font-size: x-small;"> <span>290.9 MB</span> <span>360.0 MB</span> </div> </div> </div>	<div style="border: 1px solid #0070C0; padding: 2px;"> <div style="display: flex; justify-content: space-between; align-items: center; font-size: x-small;"> <span>2 - SYSTEM (None)</span> <span>FAT32 (LBA) Primary</span> </div> <div style="margin-top: 2px;"> <div style="width: 100%; height: 10px; background: linear-gradient(to right, #0070C0 25.4MB, #0070C0 200.0MB);"></div> <div style="display: flex; justify-content: space-between; font-size: x-small;"> <span>25.4 MB</span> <span>200.0 MB</span> </div> </div> </div>	<div style="border: 1px solid #0070C0; padding: 2px;"> <div style="display: flex; justify-content: space-between; align-items: center; font-size: x-small;"> <span>3 - (None)</span> <span>Unformatted Primary</span> </div> <div style="margin-top: 2px;"> <div style="width: 100%; height: 10px; background: linear-gradient(to right, #0070C0 128.0MB, #0070C0 128.0MB);"></div> <div style="display: flex; justify-content: space-between; font-size: x-small;"> <span>128.0 MB</span> <span>128.0 MB</span> </div> </div> </div>	<div style="border: 1px solid #0070C0; padding: 2px;"> <div style="display: flex; justify-content: space-between; align-items: center; font-size: x-small;"> <span>4 - Windows (C:)</span> <span>NTFS Primary</span> </div> <div style="margin-top: 2px;"> <div style="width: 100%; height: 10px; background: linear-gradient(to right, #0070C0 107.67GB, #0070C0 232.72GB);"></div> <div style="display: flex; justify-content: space-between; font-size: x-small;"> <span>107.67 GB</span> <span>232.72 GB</span> </div> </div> </div>	<div style="border: 1px solid #0070C0; padding: 2px;"> <div style="display: flex; justify-content: space-between; align-items: center; font-size: x-small;"> <span>5 - Recovery image (None)</span> <span>NTFS Primary</span> </div> <div style="margin-top: 2px;"> <div style="width: 100%; height: 10px; background: linear-gradient(to right, #0070C0 4.72GB, #FF0000 5.08GB);"></div> <div style="display: flex; justify-content: space-between; font-size: x-small;"> <span>4.72 GB</span> <span>5.08 GB</span> </div> </div> </div>
-------------------------------------	---	--	---	--	---

Total Selected:    4.72 GB

**Destination**

Folder     ... [Alternative locations](#)

CD/DVD Burner

Use the Image ID as the file name. (Recommended)

Backup filename:   

E:\Macrium Backup\{IMAGEID}-00-00.mrimg

[Advanced Options](#)

1. In the **Destination** section, enter the target backup folder.

You can type the destination path or click the browse button to choose a folder. The destination path can be on a local drive or network share.

[Alternative Locations](#) can be used to provide backup rotations or as a fail safe for temporary unavailability of the primary backup destination.

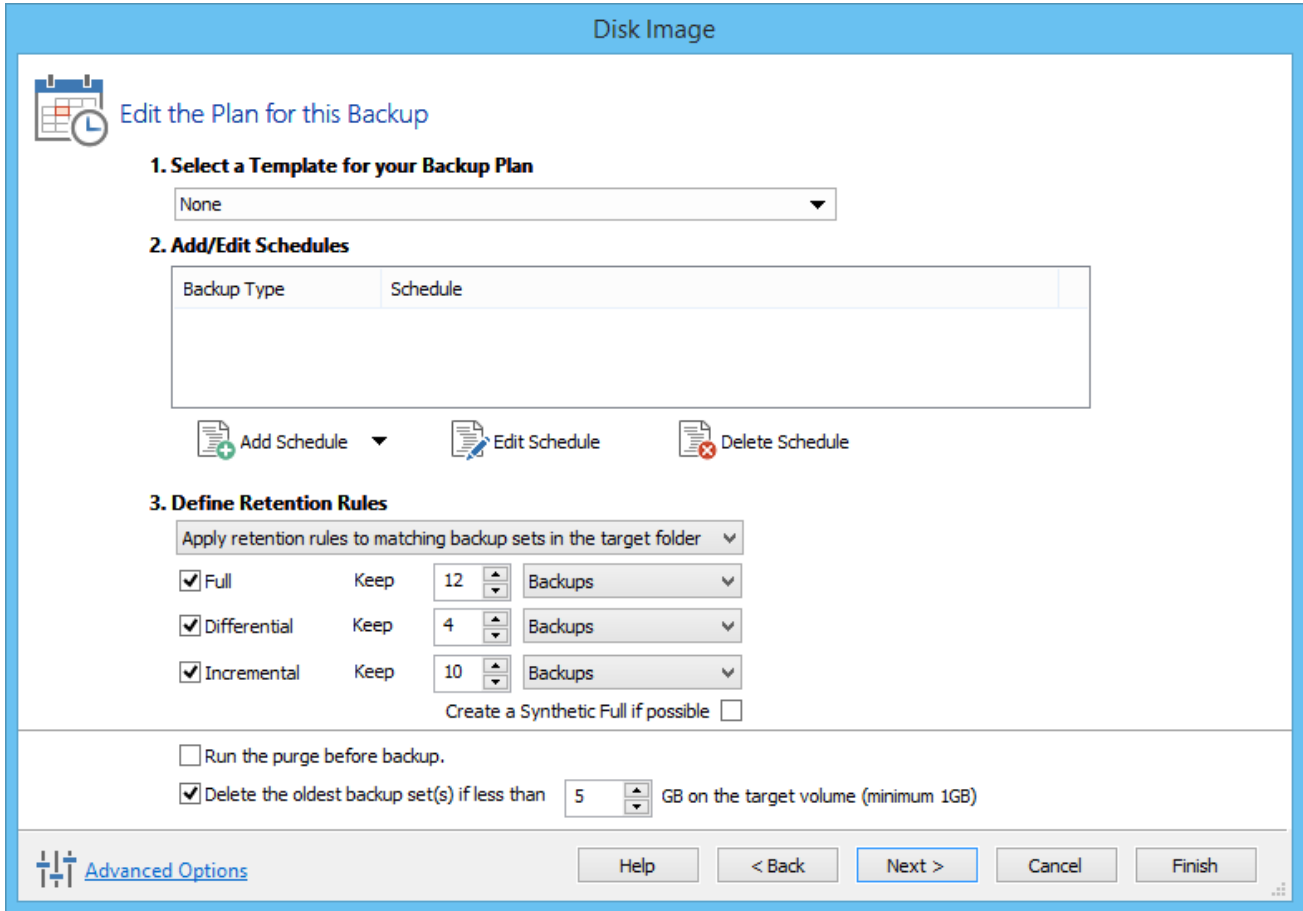
**Note:** You cannot enter a path that is located in any of the partitions included in the Image.

The recommended name for your Image file is the unique backup set identifier **{{ImageID}}**. We recommend that you always use this recommended setting as choosing your own name can cause file name collisions. Please see [How backup sets are created and maintained](#) for more information on backup file naming.

Click **'Next'** to edit the **Backup Plan** for this image or click **'Finish'** to save and/or run the Image now.

## Adding and Editing the Backup Plan

The second page of the Image Wizard is where you create or edit your **'Backup Plan'**. This defines the backup schedules and retention rules for your backup.

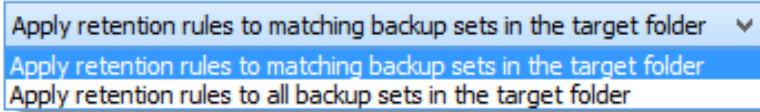


The new Macrium Reflect retention rules provide a powerful and flexible way to manage the lifetime and storage space used by your backups.

**Choose how backups are matched and retention rules are applied to the target folder**

Retention rules are applied to the target folder of the backup by selecting one of two options:

**3. Define Retention Rules**



1. **Apply retention rules to matching backup sets in the target folder.**

**Disk Images** are purged if they contain **exactly the same Partitions** as the current Image. Partitions are identified using the unique **Disk ID** stored in sector 0 of the disk and the **Partition sector offset**.

**Note:** For GPT disks the unique GPT disk GUID is used instead of the Disk ID

For **File and Folder** backups retention rules are applied according to the '**Backup Set Matching**' option select in the '**Advanced Properties**' for this backup.

2. **Apply retention rules to all backup sets in the target folder.** All backup sets in the target folder of the same type (Disk Image or File and Folder) are purged according to the retention rules.

**Note:** This option uses the same logic as Macrium Reflect v5

**Select the age or number of backup types that you wish to keep**

Full      Keep      12      Backups  
 Differential      Keep      4      Backups  
 Incremental      Keep      10      Backups  
 Create a Synthetic Full if possible

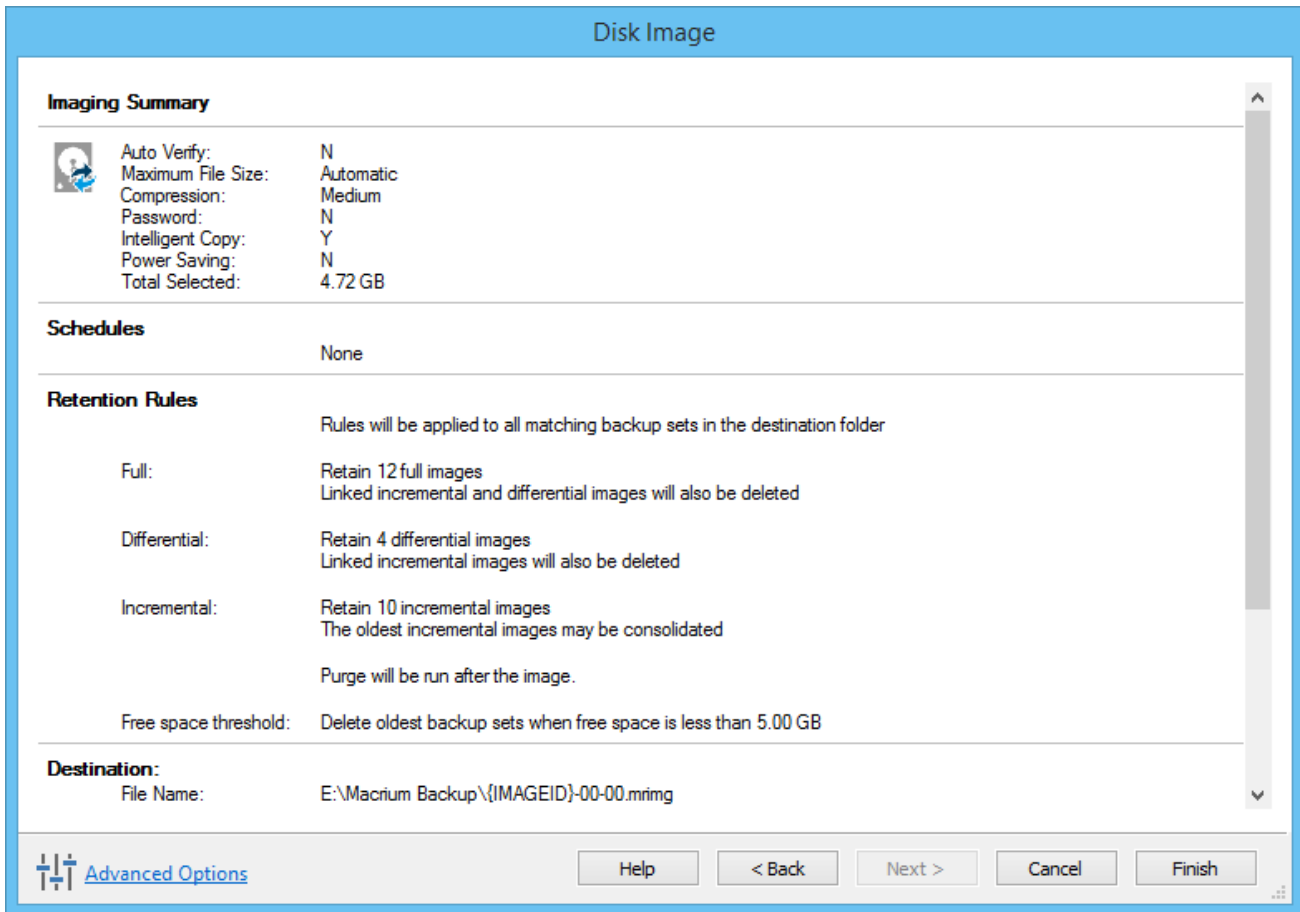
Run the purge before backup.  
 Delete the oldest backup set(s) if less than 5 GB on the target volume (minimum 1GB)

Option	Description																																																			
Full	When deleting Full backups all linked incremental and Differential backups in the same backup chain (set) are also deleted This operation will delete the entire backup set.																																																			
Differential	When deleting Differential backups all linked incremental backups in the same backup chain (set) are also deleted.																																																			
Incremental	<p>When deleting Incremental backups the integrity of the backup set is maintained by ensuring that the chain is never broken. This is achieved by merging older Incremental backups when required.</p> <p>In the example below, before retention, there is 1 Full backup, 1 Differential backup and 6 Incremental backups. The retention rules are set to retain 4 incremental backups. After retention, the most recent 4 incremental backups are retained. <b>Deleting the oldest 2 incrementals would cause the backup chain to be invalid</b> as the oldest retained incremental requires the previous 2 incremental backups to complete the chain. To ensure backup integrity the 2 older incremental backups are consolidated with it to create a new incremental backup.</p> <p><b>F = Full</b>  <b>D = Differential</b>  <b>I = Incremental</b></p> <table border="1"> <thead> <tr> <th>M</th><th>T</th><th>W</th><th>T</th><th>F</th><th>S</th><th>S</th><th>M</th><th>T</th><th>W</th><th>T</th><th>F</th><th>S</th><th>S</th><th>M</th><th>T</th><th>W</th> </tr> </thead> <tbody> <tr> <td></td><td></td><td></td><td></td><td></td><td></td><td></td><td>D</td><td>I</td><td>I</td><td>I</td><td>I</td><td></td><td></td><td>F</td><td>I</td><td>I</td> </tr> <tr> <td></td><td></td><td></td><td></td><td></td><td></td><td></td><td>--</td><td>--&gt;</td><td>I</td><td></td><td></td><td></td><td></td><td></td><td></td><td></td> </tr> </tbody> </table>	M	T	W	T	F	S	S	M	T	W	T	F	S	S	M	T	W								D	I	I	I	I			F	I	I								--	-->	I							
M	T	W	T	F	S	S	M	T	W	T	F	S	S	M	T	W																																				
							D	I	I	I	I			F	I	I																																				
							--	-->	I																																											
Create a Synthetic Full if possible	When purging Incremental backups, if the backup set <b>only contains a Full backup followed by incremental backups</b> , then this option causes the Full backup to be 'rolled forward' to <b>create a Synthetic Full backup</b> . This is also known as <b>Incremental Forever</b> .																																																			
Run the purge before the backup	Select this option to run the retention rules before the current backup. <div style="border: 1px solid black; padding: 5px; margin-top: 10px;"> <p><b>Note:</b> in Macrium Reflect v5 the current backup set wasn't included in the purge calculation when purging before the current backup. In v6 the current backup set <b>IS</b> included. This means that if you set the retention count to 1 Full backup then all of your backups will be deleted and a new Full backup created.</p> </div>																																																			
Delete oldest backup set(s) if less than n GB	Automatically remove the oldest backup set(s) in the target folder if the free space on the drive drops below the GB threshold. <div style="border: 1px solid black; padding: 5px; margin-top: 10px;"> <p><b>Note:</b> The free space threshold is actioned dynamically. If the free space available drops below the threshold then the running backup is temporarily paused while older backup sets are purged.</p> </div>																																																			

Click '**Next**', to view a summary of all settings for this image or click '**Finish**' to save and/or run the Image now.

## Displaying the Image settings

The final page of the Image Wizard displays all settings used for creating this image.



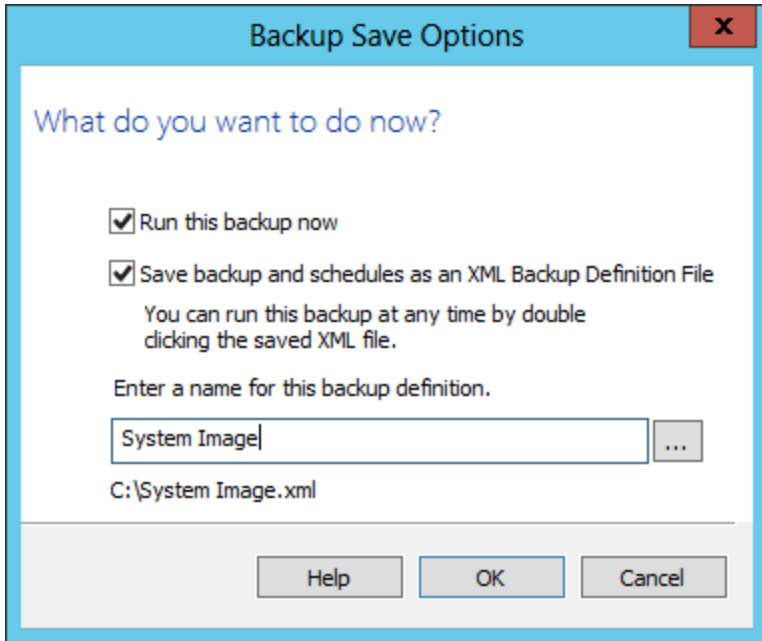
Click **Finish** to Run and/or save your Image definition.

## Saving the backup definition

You are now given the opportunity to save the backup options.

The backup Save Options Dialog enables you to save your backup options as a re-usable XML definition file.

This is essential for many operations in Reflect including Scheduling and creating Incremental and Differential backups



Option	Description
<b>Run this backup now</b>	Create a <b>'Full'</b> backup now using the backup definition
<b>Save to an XML file</b>	Saving your definition enables you to: <ul style="list-style-type: none"> <li>• Re-run the same backup without stepping through the wizard</li> <li>• Run Incremental and Differential backups</li> <li>• Schedule your backups</li> <li>• Create a Desktop shortcut for running with one click</li> </ul>
<b>Name for this backup definition</b>	Enter a meaningful name for this definition
	Choose a folder to save the XML definition to. Always save to a local folder. It isn't necessary to save the definition to the same folder as your backup target <div style="border: 1px solid black; padding: 5px; margin-top: 10px;"> <p><b>Note:</b> Always save your definition to a local drive and never to a password protected network share.</p> </div>

See also: [Retrieving saved XML backup definition](#)

## Best practises for saving Macrium Reflect backup definition files

Regardless of your PC environment, leaving your backup definition files in an insecure location is bad practice. The effort required to ensure your files are secure is minimal and doesn't impede day to day usage of Macrium Reflect.

### What's the problem?

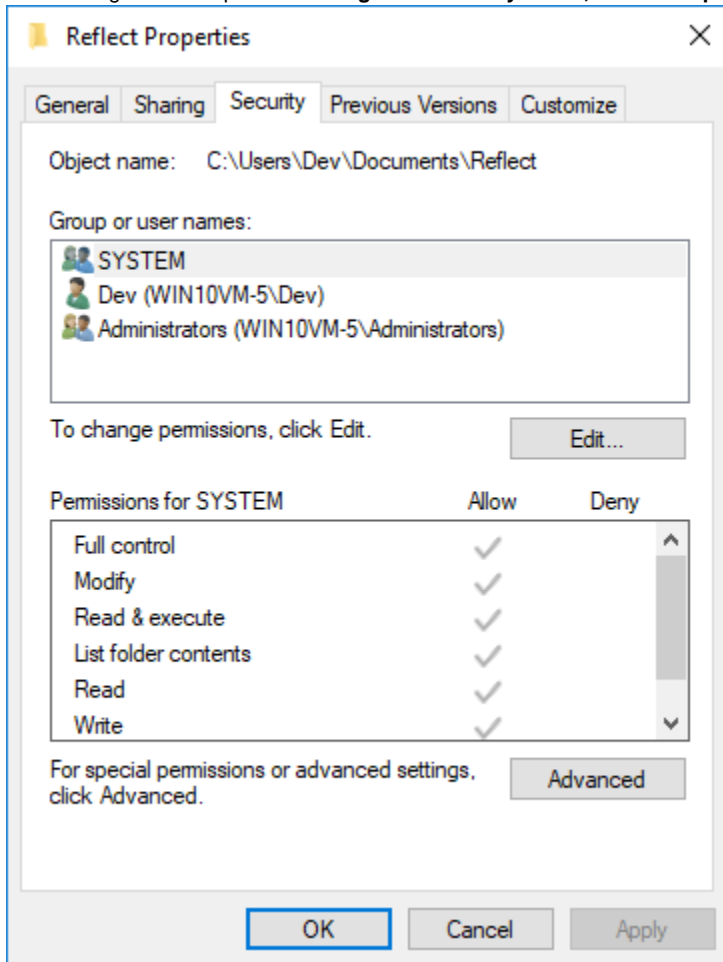
Backup definition (.xml) files are used to initiate backups either interactively by using Macrium Reflect directly, or as scheduled tasks using the Windows Tasks Scheduler. If you save your backup definitions to a publicly accessible folder then these can be edited by standard users and could potentially compromise your system. In addition, it's also possible to create batch files, either MS-DOS, PowerShell or VBScript, to automatically run during your backups as described [here](#). A restricted user with bad intentions could easily create a batch file to run with elevated privileges when a scheduled or interactive backup runs.

The default, and recommended, location for your backup definitions is folder '**C:\users\<USER NAME>\documents\reflect'**. When running Reflect for the first time this location is created and defaulted when saving. See [Backup Save Options](#) for more information on how to save your

definitions.

This folder is automatically restricted for standard users and can only be accessed by Administrators and the local SYSTEM account.

To see assigned NTFS permissions **right click on any folder, select 'Properties'** and **click the 'Security' tab**:



In the above example only SYSTEM, Dev (the Macrium Reflect user) and the Administrators group can access files contained in the folder. Standard users are denied access and cannot modify or create files.

We strongly recommend that, if not using the default location, you ensure that NTFS permissions are used to prevent unauthorised modification and creation of files in your backup definition folders.

For more information on setting NTFS permissions for folders and files please see [Microsoft TechNet - How IT works NTFS Permissions](#)


**Note:** A popular misconception is that backup definition files should be saved to the same folder as your backup files. **This is incorrect.** Backup definitions are only required to create backups and have no other purpose. They are not required for restore.

If you want to run the backup at this point, select '**Run this backup now**' and click **OK**.



'C:\Macrium\My Backup(1).xml'

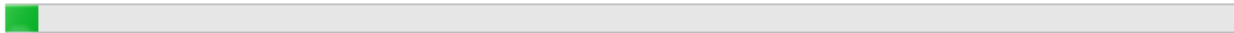
**Imaging Summary**


 Backup Definition File: C:\Macrium\My Backup(1).xml  
Auto Verify: N  
Maximum File Size: Automatic  
Compression: Medium  
Password: N  
Intelligent Copy: Y  
Power Saving: N  
Total Selected: 4.72 GB

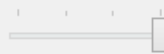
**Destination:**  
Backup Type: Full  
File Name: E:\Macrium Backup\4140CC6F8C2906F0-00-00.mrimg

**Operation 1 of 1**  
Hard Disk: 1  
Drive Letter: N/A  
File System: NTFS  
Label: Recovery image  
Size: 5.08 GB  
Free: 370.9 MB  
Used: 4.72 GB

**Starting Image - 11 February 2015 23:21:26**  
Initializing

Overall Progress: 2%      Transfer Rate: 267.7 Mb/s      Time remaining: 2 Minutes  


Current Progress: 2%      Time remaining: 2 Minutes  


Low Priority  High Priority      On completion: No Shutdown

## Create a Disk Image video