

# Drive letters assigned to restored or cloned partitions

This article explains how to change the drive letters of restored or cloned partitions during and after the restore or clone process.

- How Windows assigns drive letters to mounted volumes (drives) on your system
- Changing drive letters in the 'Restore Wizard' or 'Clone Wizard' when running Reflect in Windows
- Changing drive letters using the Windows Disk Management Console after restoring or cloning

## How Windows assigns drive letters to mounted volumes (drives) on your system

Windows maintains driver letter persistence by storing a reference to each mounted volume and drive letter in the system registry using the following registry key

HKEY\_LOCAL\_MACHINE\SYSTEM\MountedDevices

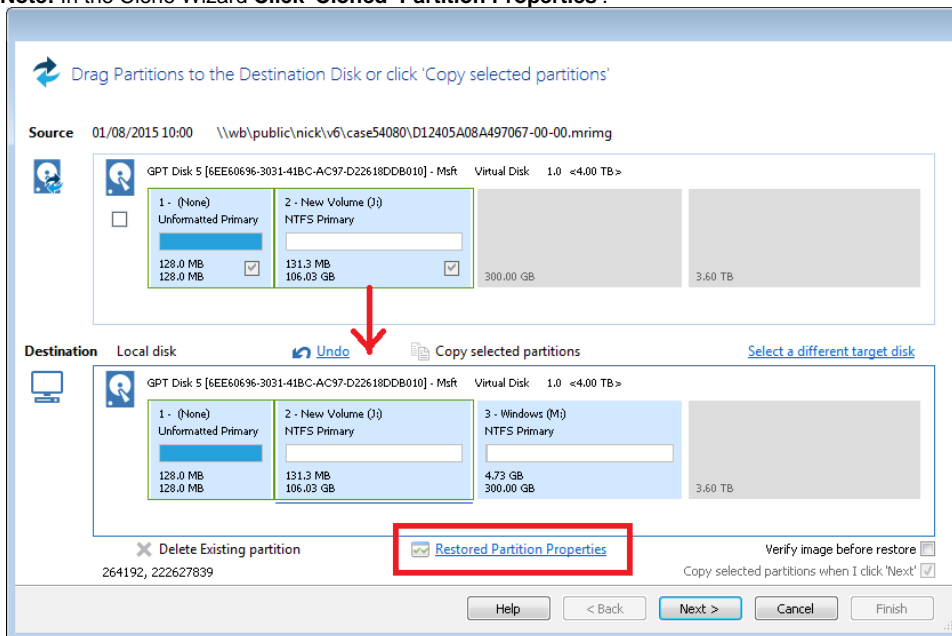
<https://technet.microsoft.com/en-us/library/cc978525.aspx>

**Note:** When restoring using the **Windows PE** rescue media, the letters assigned to restored partitions are **temporary** for that Windows PE session only. When you **boot into the restored system**, drive letter assignments will be **exactly the same** as they were when the image was created.

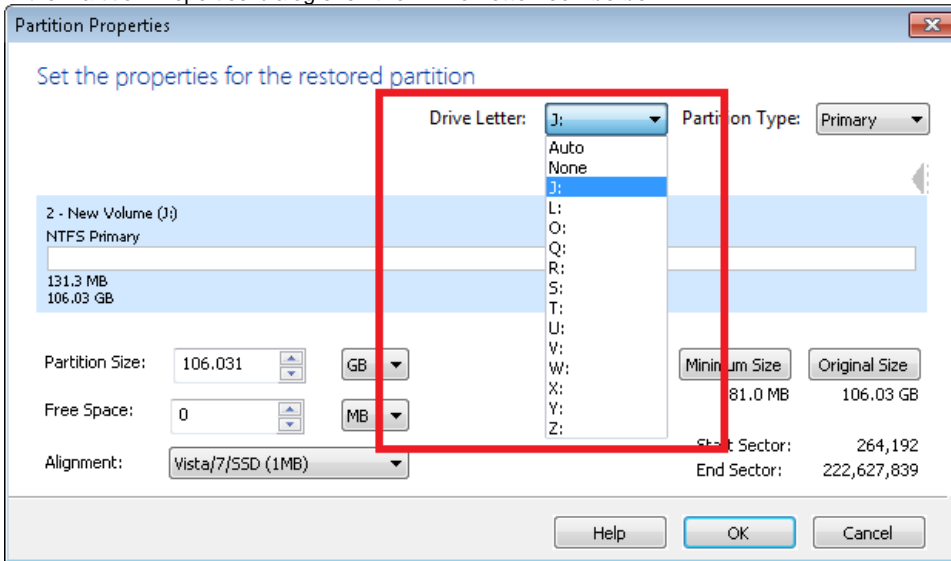
## Changing drive letters in the 'Restore Wizard' or 'Clone Wizard' when running Reflect in Windows

1. In the Restore Wizard **Click the 'Restored Partition Properties'** link after copying or dragging the partition to its destination on the target disk:

**Note:** In the Clone Wizard **Click 'Cloned Partition Properties'.**



2. In the 'Partition Properties' dialog click the 'Drive Letter' combo box:



Property	Description
Auto	Let Windows automatically assign the next available drive letter
None	No drive letter will be assigned to the restored partition
Letter	Select a drive letter to use from this list of free letters. The original drive letter will be selected by default.

## Changing drive letters using the Windows Disk Management Console after restoring or cloning

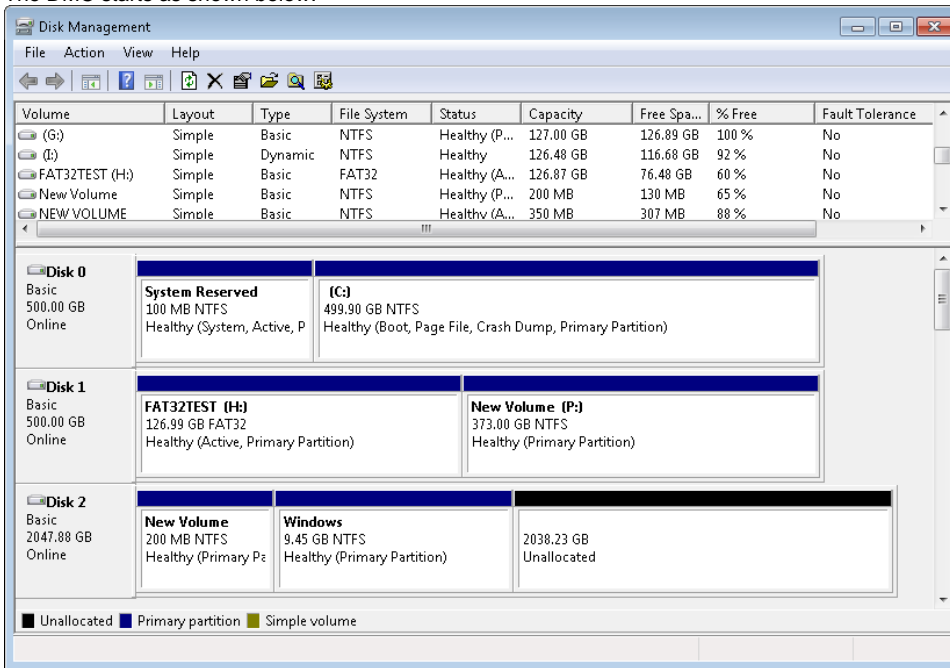
Windows ships with a utility to maintain local drives and partitions called the **Windows Disk Management Console** (DMC). Using the DMC you can easily change the drive letters assigned to any partition on your system, (except for your system drive C:),

1. To start the Windows Disk Management Console

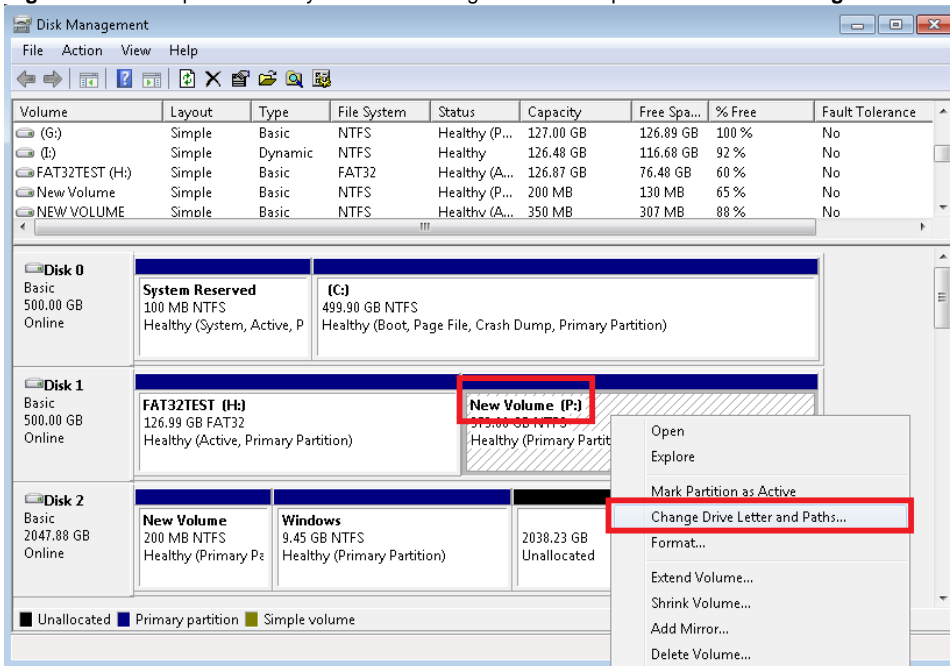
Click 'Start' or press the Windows Key, Type the following and press enter:

diskmgmt.msc

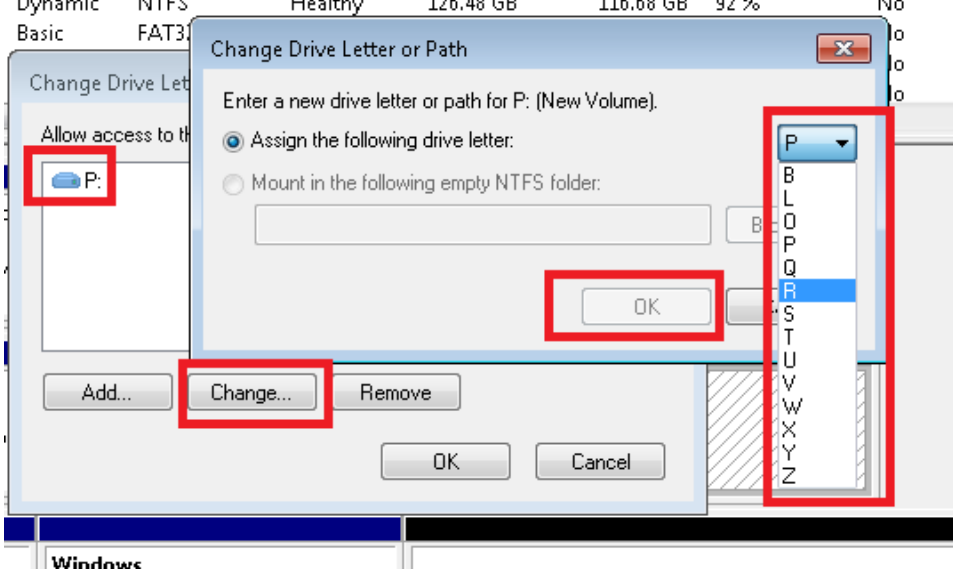
2. The DMC starts as shown below:



3. Right click on the partition that you want to change in the lower pane and select 'Change drive letters and paths':



4. In the dialog that opens, **select** the original drive letter, **Click 'Change'**, **Choose** a new drive letter and finally **Click 'OK'**



See also:

[Restoring and browsing](#)  
[Restoring an image from within Windows](#)  
[Restoring a System image from Windows](#)  
[Modifying restore destination partition properties](#)